

**EASTERN KERN AIR POLLUTION CONTROL DISTRICT**



**MAJOR SOURCE  
PERMIT TO OPERATE**

2700 "M" Street, Suite 302  
Bakersfield, CA 93301-2370  
Bakersfield: (661) 862-5250  
Field Office: (661) 823-9264

**Permittee:** National Cement Company of California, Inc.

**Location:** (5 Miles East of I-5 on Hwy. 138)  
Lebec, California 93243

**Permit No:** 1128-V-2000

**Mailing Address** 15821 Ventura Boulevard, Suite 475  
Encino, CA 91436

**Permit No:** 1128-V-2000

**Issuance Date:** March 29, 2011

**Expiration Date:** March 29, 2016

**Nature of Business:** Producer of Portland Cement

This permit is issued pursuant to, and is conditioned upon, compliance with provisions of the Eastern Kern Air Pollution Control District Rules and Regulations as authorized by the California Health and Safety Code, Section 39002. This permit is subject to accuracy of all information submitted relating to the permit application and to conditions appended hereto. It is valid from date of issuance until date of expiration unless renewed and shall be made readily available for inspection at any reasonable time to any and all persons who may request to see it.

Pursuant to the Clean Air Act Amendments of 1990 (CAAA), all conditions of this permit are federally enforceable by U.S. EPA and Eastern Kern Air Pollution Control District. Those provisions which are not required by the CAAA are considered to be Eastern Kern provisions and are not federally enforceable by U.S. EPA.

By:

David L. Jones  
Air Pollution Control Officer

## **TABLE OF CONTENTS**

General Permit Conditions

List of Insignificant Air Pollutant Emitting Equipment

Process Diagrams

<b><u>Emission Unit</u></b>	<b><u>Description of Source</u></b>
001	Primary Crushing & Ore Storage
002	Secondary Crushing & Ore Storage
003	Raw Material Reclaiming, Grinding, & Storage
005	Petroleum Coke Fuel System
006	Clinker Cooling & Storage System
007	Finish Mill #1 & Storage
008	Finish Mill #2
009	Gypsum Truck Off-Loading Operation
010	Cement Storage & Shipping
017	Quarry Operation
018	Gasoline Storage & Dispensing System
019	Piston Engine with Air Compressor #E90004
020	Piston Engine with Air Compressor #E90006
025	Emergency Use Piston Engine with Generator #E90777
026	Emergency Use Piston Engine with Generator #51ED01
028	Truck-Mounted Vacuum #90707
033	Vacuum Type Fugitive Dust Yard Sweeper
034	Synthetic Gypsum Receiving & Storage

## **TABLE OF CONTENTS**

<b><u>Emission Unit</u></b>	<b><u>Description of Source</u></b>
035	Truck-Mounted Vacuum
036	Cement Finish Mill #3
037	Emergency Piston Engine with Generator
038	Screening Plant
039	Tire Derived Fuel Storage, Receiving, and Handling Equipment
040	Solid Fuel Receiving/Handling System
041	Truck Mounted Vacuum
042	Preheater/Precalciner Cement Kiln System
	Appendix A (Portland Cement NESHAP)
	Appendix B (PSD)
	Appendix C (PSD Application)
	Appendix D (Greenhouse Gas Facility Wide Reporting)

## General Permit Conditions

In accordance with California Health and Safety Code, Sections 39002 and 42301.10 through 42301.12 and all applicable Eastern Kern Air Pollution Control District (District) Rules and Regulations, the conditions which are listed below are hereby contained in and made a part of this permit:

	<b>Federally Enforceable Conditions</b>	<b>Reg/Rule</b>
1.	<p><b><u>Inspections</u></b></p> <p>Inspections shall be made by the enforcement agency for the purpose of obtaining information necessary to determine whether air pollution sources are in compliance with applicable rules and regulations, including authority to require record keeping and to make inspections and conduct tests of air pollution sources.</p>	Reg. I, Rule 107
2.	<p><b><u>Stack Monitoring</u></b></p> <p>Upon the request of and as directed by the Control Officer, the owner shall provide, install, and operate continuous monitoring equipment on such operations as directed. The owner shall maintain, calibrate, and repair the equipment and shall keep the equipment operating at design capabilities.</p>	Reg. I, Rule 108
3.	<p><b><u>Source Sampling</u></b></p> <p>Upon the request of the Control Officer and as directed by him the owner of any source operation which emits or may emit air contaminants, for which emission limits have been established, shall provide the necessary and proper facilities for source sampling.</p> <p>The applicable test method, if not specified in the rule, shall be conducted in accordance with Title 40 CFR, Subpart 60, Appendix A - Reference Methods, except particulate matter (PM<sub>10</sub>) for compliance with Rule 210.1 requirements shall be conducted in accordance with Title 40 CFR, Subpart 51, Appendix M, Method 201 or 201A. Where no test method exists in the preceding references for a source type source sampling shall be conducted in accordance with California Air Resources Board (CARB) approved methods.</p>	Reg. I, Rule 108.1
4.	<p><b><u>Equipment Breakdown</u></b></p> <p>An occurrence which constitutes a breakdown condition, and which persists only until the end of the production run or 24-hours, whichever is sooner (except for continuous monitoring equipment, for which the period shall be ninety-six (96) hours), shall constitute a violation of any applicable emission limitation or restriction prescribed by these Rules and Regulations; however, no enforcement action may be taken provided the owner or operator demonstrates to the Control Officer that a breakdown condition exists and the proper requirements are met.</p>	Reg. I, Rule 111

	<b>Federally Enforceable Conditions</b>	<b>Reg/Rule</b>
5.	<p><b><u>Severability</u></b></p> <p>If any provision, clause, sentence, paragraph, section or part of these Regulations or application thereof to any person or circumstance shall for any reason be adjudged by a court of competent jurisdiction to be unconstitutional or invalid, such judgment shall not affect or invalidate the remainder of this Regulation and the application of such provision to other persons or circumstances, but shall be confined in its operation to the provision, clause, sentence, paragraph, section or part thereof directly involved in the controversy in which such judgment shall have been rendered and to the person or circumstance involved, and it is hereby declared to be the intent of the Eastern Kern Air Pollution Control Board that these Regulations would have been issued in any case had such invalid provision or provisions not been included.</p>	Reg. I, Rule 114
6.	<p><b><u>Conditional Approval</u></b></p> <p>The Control Officer shall issue an Authority to Construct or a Permit to Operate, subject to conditions to insure compliance of the operation of any article, machine, equipment or other contrivance within the standards of Rule 208 and 208.1, in which case the conditions shall be specified in writing. Commencing work under such Authority to Construct or operation under such Permit to Operate shall be deemed acceptance of all conditions so specified. The Control Officer shall issue an Authority to Construct or Permit to Operate with revised conditions upon receipt of a new application, if the applicant demonstrates the article, machine, equipment or other contrivance can be operated within the standards of Rule 208 and 208.1 under the revised conditions.</p>	Reg. II, Rule 209

	<b>Federally Enforceable Conditions</b>	<b>Reg/Rule</b>
7.	<p><b><u>Standards for Authority to Construct</u></b></p> <p>A. The Permittee may make a change to this permitted facility that is not addressed or prohibited by the federally enforceable conditions of this Part 70 permit without obtaining a Part 70 permit revision if:</p> <ol style="list-style-type: none"> <li>1) The Permittee has obtained all permits and approvals required by District Rules 201 and 210.1 (unless the change is exempt under District Rule 202);</li> <li>2) The change is not subject to any requirements under Title IV of the Clean Air Act;</li> <li>3) The change is not a Title I modification; and</li> <li>4) The change does not violate an applicable requirement of the Clean Air Act or a federally enforceable term or condition of this permit.</li> </ol> <p>B. For a change that qualified under this section, the Permittee shall provide contemporaneous written notice to the District and the U.S. EPA (except for a change that is exempt under District Rule 202). This written notice shall describe the change, including the date it was made, and shall contain other information as required to determine new applicable requirements of the Clean Air Act that apply as a result of the change;</p> <p>C. Upon satisfying the requirements of paragraph B above, the Permittee may make the proposed change;</p> <p>D. Changes that qualify under this section are not subject to the requirements for Part 70 revisions;</p> <p>E. The Permittee shall include each off-permit change made under this section in the application for renewal of this Part 70 permit; and</p> <p>F. The permit shield(s) provided in this permit do not apply to off-permit changes made under this section.</p>	Reg. II, Rule 210.1 Section IV. D.3
8.	<p><b><u>Prevention of Significant Deterioration (PSD)</u></b></p> <p>Source will be subject to District Rule 210.4, Prevention of Significant Deterioration (PSD) if major modifications are made.</p>	Reg. II, Rule 210.4

	<b>Federally Enforceable Conditions</b>	<b>Reg/Rule</b>
9.	<p><b><u>Tailoring Rule Requirements</u></b></p> <p>Per the Tailoring Rule, a current permit application for an existing Title V facility includes facility-wide emissions of all air pollutants for which the source exceeds a Title V applicability threshold. If the facility has actual or potential emissions <math>\geq 100,000</math> tpy CO<sub>2</sub> equivalent (CO<sub>2</sub>e) and <math>\geq 100</math> tpy Greenhouse Gas (GHG), then GHG emissions must be included in the Title V permit application, as the facility exceeds the dual GHG applicability threshold (Title V major for GHG emissions).</p> <p>If actual or potential GHG emissions are <math>&lt; 100,000</math> tpy CO<sub>2</sub>e <i>or</i> <math>&lt; 100</math> tpy GHGs, no modification to the Title V permit application is necessary, as the facility is not a major source of GHG emissions. EPA has not established a deadline for submitting an updated Title V permit application to include GHG emissions; GHG emissions should be included when renewing or modifying a Title V permit application on or after January 2, 2011.</p> <p>Note: The international GHG reporting unit CO<sub>2</sub>e is the sum of each GHG, multiplied by its global warming potential (GWP). The second threshold is the total GHG emissions from the facility in tpy, without considering the GWP.</p>	40 CFR Parts 51, 52, 70, and 71
10.	<p><b><u>Permit Fees</u></b></p> <p>Every applicant for an Authority to Construct or a Permit to Operate shall pay a filing fee. For issuance of an Authority to Construct, or an initial Permit to Operate, the applicant shall pay fees as prescribed in Rule 301. For issuance of an Authority to Construct, application processing fees shall also be paid as prescribed in Rule 303. The applicant shall receive credit for filing fees paid.</p> <p>Annually on the anniversary of issuance of a Permit to Operate, the permittee shall pay a renewal fee as prescribed in Rule 301. Fees collected pursuant to Rule 201.1, Section VIII.B. shall supplement applicable Rules 301 and 301.3 fee requirements.</p> <p><b><u>Payment of Supplemental Fee</u></b></p> <p>An owner or operator, or his designee, shall pay an annual supplemental fee for a permit to operate pursuant to Rule 201.1 as determined by the calculation method in Subsection VIII.B.3., to provide a District-wide fee rate of \$25 per ton of fee-based emissions (CPI-adjusted) for all facilities subject to Rule 201.1, unless Rule 201.1 VIII.B.2. applies.</p>	Reg. III, Rule 301  Rule 201.1 Section VIII. B.

	<b>Federally Enforceable Conditions</b>	<b>Reg/Rule</b>
11.	<p><b><u>Greenhouse Gas Fee</u></b></p> <p>Any stationary source that has actual GHG emissions, in the prior calendar year, greater than or equal to 100,000 tons of CO<sub>2</sub>e, as calculated in accordance with 40 CFR Part 98, shall pay a Consumer Price Index (CPI) adjusted GHG fee per ton of CO<sub>2</sub>e being emitted. Sources subject to this Rule shall submit an annual report of GHG emissions to the District no later than the thirty-first day of March.</p>	Reg. III, Rule 301.4
12.	<p><b><u>Visible Emissions</u></b></p> <p><b><u>Limits</u></b></p> <p>A person shall not discharge into the atmosphere, from any single source of emission whatsoever, any air contaminant for a period or periods aggregating more than three minutes in any one hour which is:</p> <p>A. As dark or darker in shade as that designated as No. 1 on the Ringelmann Chart, as published by the United States Bureau of Mines, or</p> <p>B. Of such opacity as to obscure an observer's view to a degree equal to or greater than does smoke described in Subsection A.</p>	Reg. IV, Rule 401
13.	<p><b><u>Particulate Matter Concentration - Desert Basin</u></b></p> <p>A. A person shall not discharge into the atmosphere from any single source operation, in service on the date this Rule is adopted, particulate matter in excess of 0.2 grains per cubic foot of gas at standard conditions.</p> <p>B. A person shall not discharge into the atmosphere from any single source operation, the construction or modification of which commenced after the adoption of this Rule, particulate matter in excess of 0.1 grains per cubic foot of gas at standard conditions.</p>	Reg. IV, Rule 404.1
14.	<p><b><u>Particulate Matter - Emission Rate</u></b></p> <p>A person shall not discharge into the atmosphere from any source operation, particulate matter in excess of the limits set forth in the allowable particle emissions based on process weight rate table included in Rule 405.</p>	Reg. IV, Rule 405

	<b>Federally Enforceable Conditions</b>	<b>Reg/Rule</b>
15.	<p><b><u>Process Weight - Portland Cement Kilns</u></b></p> <p>Cement kilns, the construction or modification of which is commenced after August 17, 1971, shall not discharge into the atmosphere particulate matter in excess of the Environmental Protection Agency Standards of Performance. Cement kilns regulated by this Rule are not subject to other process weight Rules.</p>	Reg. IV, Rule 406
16.	<p><b><u>Sulfur Compounds</u></b></p> <p>A person shall not discharge into the atmosphere sulfur compounds, which would exist as a liquid or gas at standard conditions, exceeding in concentration at the point of discharge: 0.2 percent by volume calculated as sulfur dioxide (SO<sub>2</sub>).</p>	Reg. IV, Rule 407
17.	<p><b><u>Fuel Burning Equipment - Combustion Contaminants</u></b></p> <p>A person shall not discharge into the atmosphere combustion contaminants exceeding in concentration at the point of discharge: 0.1 grain per cubic foot of gas calculated to 12 percent of carbon dioxide (CO<sub>2</sub>) at standard conditions.</p>	Reg. IV, Rule 407.2
18.	<p><b><u>Fuel Burning Equipment - Desert Basin</u></b></p> <p>Fuel burning equipment, the construction or modification of which is commenced after August 17, 1971, shall not discharge into the atmosphere particulate matter, sulfur dioxide or nitrogen oxides in excess of the Environmental Protection Agency Standard of Performance.</p>	Reg. IV, Rule 409
19.	<p><b><u>Organic Solvents</u></b></p> <p>A person shall not discharge into the atmosphere more organic materials in any one day from any article, machine, equipment or other contrivance in which any organic solvent or any material containing organic solvent is utilized unless the emissions are controlled or reduced as outlined in the organic solvent rule (410).</p>	Reg. IV, Rule 410
20.	<p><b><u>Disposal and Evaporation of Solvents</u></b></p> <p>A person shall not during any one day disposed of a total of more than 1½ gallons of any photochemically reactive solvent as defined in Rule 410.X., or of any material containing more than 1½ gallons of any such photochemically reactive solvent into the atmosphere.</p>	Reg. IV, Rule 410
21.	<p><b><u>Organic Solvent Degreasing Operation</u></b></p> <p>A person shall not operate any organic solvent degreasing operation unless the equipment utilized complies with all applicable requirements of Rule 410.3.</p>	Reg. IV, Rule 410.3

	<b>Federally Enforceable Conditions</b>	<b>Reg/Rule</b>
22.	<p><b><u>Storage of Organic Liquids</u></b></p> <p>A person shall not use equipment to store organic liquids and petroleum distillates with a true vapor pressure greater than 1.5 psia unless provisions are made for controlling organic vapors.</p>	Reg. IV, Rule 411
23.	<p><b><u>Gasoline Transfer into Stationary Storage Containers, Delivery Vessels and Bulk Plants</u></b></p> <p>A person shall not transfer gasoline into storage or delivery vessels unless provisions are made to recover 95% of the displaced vapors.</p>	Reg. IV, Rule 412
24.	<p><b><u>Transfer of Gasoline into Vehicle Fuel Tanks</u></b></p> <p>No person shall transfer gasoline into vehicle fuel tanks unless CARB-Certified Phase II dispensing equipment is utilized and maintained in correct working order.</p>	Reg. IV, Rule 412.1
25.	<p><b><u>Nuisance</u></b></p> <p>A person shall not discharge from any source whatsoever such quantities of air contaminants or other material which cause injury, detriment, nuisance or annoyance to any considerable number of persons or to the public or which endanger the comfort, repose, health or safety of any such persons or the public or which cause or have a natural tendency to cause injury or damage to business or property.</p>	Reg. IV, Rule 419
26.	<p><b><u>Federal New Source Performance Standards (NSPS)</u></b></p> <p>Provisions of Part 60, Chapter 1, Title 40, Code of Federal Regulations, in effect September 5, 1996, are hereby adopted by reference and made a part hereof. All new and modified sources shall comply with standards, criteria and requirements set forth therein.</p> <p>All applicable requirements of 40 CFR Part 60, Subparts A, F, Y, and IIII apply to this facility.</p> <p>Subpart F, Standards of Performance for Portland Cement Plants Provisions of this subpart apply to the kiln, clinker cooler, raw mill system, finish mill system, raw mill dryer, clinker storage, finished product storage, conveyor transfer points, bagging and bulk loading and unloading systems.</p>	Reg. IV, Rule 422

	<b>Federally Enforceable Conditions</b>	<b>Reg/Rule</b>
27.	<p><b><u>National Emission Standards for Hazardous Air Pollutants and Source Categories (NESHAPS)</u></b></p> <p>Provisions of Title 40, Chapter 1, Parts 61 and 63, Code of Federal Regulations, in effect September 5, 1996, are hereby adopted by reference and made a part hereof. All sources of hazardous air pollution shall comply with applicable standards, criteria and requirements set forth herein.</p> <p>All applicable requirements of 40 CFR Part 61, Subpart M and 40 CFR Part 63, Subparts A, LLL, and ZZZZ apply to this facility.</p> <p>For the purposes of 40 CFR Part 63, Subpart LLL, “Significant Change” is defined as the use by the facility of a fuel or alternate raw material that is a Federally regulated hazardous waste. The normal use of District approved fuels and/or fuel blends and District approved raw materials or raw material blends does not constitute a “significant change” in operation of the facility.</p> <p>For the purposes of 40 CFR Part 63, Subpart ZZZZ, “Stationary Reciprocating Internal Combustion Engines” You are subject to this subpart if you own or operate a stationary RICE at a major or area source of HAP emissions, except if the stationary RICE is being tested at a stationary RICE test cell/stand.</p>	Reg. IV, Rule 423

	<b>Federally Enforceable Conditions</b>	<b>Reg/Rule</b>
28.	<p><b><u>Compliance Certification</u></b></p> <p>The owner/operator shall comply with the following procedures for compliance certification:</p> <ul style="list-style-type: none"> <li>A. Submittal of a compliance certification by the owner or operator to the U.S. EPA and copy to the APCO within 60 days after end of compliance certification period;</li> <li>B. Compliance certification period shall begin April 1 of each year and end March 31 of the following year;</li> <li>C. Such compliance certification shall identify the basis for each permit term or condition, e.g., specify the emissions limitation, standard or work practice, and a means of monitoring compliance with the term or condition;</li> <li>D. Such compliance certification shall include compliance status and method(s) used to determine compliance for the current time period and over entire reporting period; and</li> <li>E. Such compliance certification shall include any additional inspection, monitoring or entry requirement promulgated pursuant to Sections 114(a) and 504(b) of the CAA.</li> </ul> <p>Any application form, report, or compliance certification submitted pursuant to these regulations shall contain certification by a responsible official of truth, accuracy, and completeness. This certification and any other certification required under this part shall state that, based on information and belief formed after reasonable inquiry, the statements and information in the document are true, accurate, and complete.</p> <p>U.S. EPA's Mailing Address:  Director, Air Division  75 Hawthorne Street  AIR-3  San Francisco, CA 94105</p>	40 CFR 70.5d

	<b>Federally Enforceable Conditions</b>	<b>Reg/Rule</b>
29.	<p><b><u>Compliance with Permit Conditions</u></b></p> <p>A. Permittee shall comply with all permit conditions;</p> <p>B. Permit does not convey any property rights or any exclusive privilege;</p> <p>C. Non-compliance with any permit condition shall be grounds for permit termination, revocation and reissuance, modification, enforcement action or denial of permit renewal;</p> <p>D. Permittee shall not use “need to halt or reduce a permitted activity in order to maintain compliance” as a defense for non-compliance with any permit condition;</p> <p>E. Pending permit action or notification of anticipated non-compliance does not stay any permit condition; and</p> <p>F. Within a reasonable time period, permittee shall furnish any information requested by the APCO, in writing, for purpose of determining: 1) compliance with the permit, or 2) whether or not cause exists for a permit or enforcement action.</p>	Reg. II, Rule 201.1
30.	<p><b><u>Emergency Provisions</u></b></p> <p>A. The permittee shall comply with the requirements of Rule 111 and the emergency provisions contained in all permit streamlining requirements imposed in accordance with Subsection VI.J. all District-only rules which apply in accordance with Subsection VI.K.1. and all applicable federal requirements not subsumed by such permit streamlining requirement(s) or District-only rules;</p> <p>B. Within two weeks of an emergency event, an owner or operator of the source shall submit to the District a properly signed, contemporaneous log or other relevant evidence which demonstrates that:</p> <ol style="list-style-type: none"> <li>1) An emergency occurred;</li> <li>2) The permittee can identify the cause(s) of the emergency;</li> <li>3) The facility was being properly operated at the time of the emergency;</li> <li>4) All steps were taken to minimize the emissions resulting from the emergency; and</li> <li>5) Within two working days of the emergency event, the permittee provided the District with a description of the emergency and any mitigating or corrective actions taken;</li> </ol> <p>C. In any enforcement proceeding, the permittee has the burden of proof for establishing that an emergency occurred.</p>	Reg. II, Rule 201.1 Section VII. B.12

	<b>Federally Enforceable Conditions</b>	<b>Reg/Rule</b>
31.	<p><b><u>Record Keeping</u></b></p> <p>A. Recording of maintenance of all monitoring and support information associated with all permit streamlining requirements imposed in accordance with Rule 201.1, Subsection VI.J., all District-only rules which apply in accordance with Rule 201.1, Subsection VI.K.1., and all applicable federal requirements not submitted by such permit streamlining requirement(s) or District-only rules, including:</p> <ol style="list-style-type: none"> <li>1.) Date, place, and time of sampling;</li> <li>2.) Operating conditions at time of sampling;</li> <li>3.) Date, place, and method of analysis; and</li> <li>4.) Results of analysis;</li> </ol> <p>B. Retention of records of all required monitoring data and support information for a period of at least five years from the date of sample collection, measurement, report, or application; and</p> <p>C. Any other record keeping deemed necessary by the APCO to ensure compliance with all permit streamlining requirements imposed in accordance with Rule 201.1, Subsection VI.J., all District-only rules which apply in accordance with Rule 201.1, Subsection VI.K.1., and all applicable federal requirements not subsumed by such permit streamlining requirement(s) or District-only rules.</p>	Reg. II, Rule 201.1

	<b>Federally Enforceable Conditions</b>	<b>Reg/Rule</b>
32.	<p><b><u>Reporting</u></b></p> <p>A. Any non-conformance with permit requirements, including any attributable to emergency conditions (as defined in Rule 201.1) shall be promptly reported to the APCO and in accordance with Rule 111;</p> <p>B. Monitoring report shall be submitted at least every six months identifying any non-conformance with permit requirements, including any previously reported to the APCO;</p> <p>C. All reports of non-conformance with permit requirements shall include probable cause of non-conformance and any preventative or corrective action taken;</p> <p>D. Progress report shall be made on a compliance schedule at least semi-annually and including:</p> <ol style="list-style-type: none"> <li>1) Date when compliance will be achieved,</li> <li>2) Explanation of why compliance was not, or will not be achieved by the scheduled date, and</li> <li>3) Log of any preventative or corrective action taken; and</li> </ol> <p>E. Each monitoring report shall be accompanied by a written statement from the responsible official certifying the truth, accuracy, and completeness of the report.</p> <p>F. Any source subject to Rule 201.1 shall submit to the District by March 31 of each year, actual GHG emissions for the previous calendar year. Emissions shall be calculated and reported in accordance with 40 CFR Part 98, Mandatory Greenhouse Gas Reporting.</p>	Reg. II, Rule 201.1
33.	<p><b><u>Referencing of District and Applicable Requirements</u></b></p> <p>Pursuant to Rule 201.1.VII.C. District hereby references the following documents which are clearly identified and available to the District and to the public:</p> <p>A. Plant modernization project; and</p> <p>B. Each Authority to Construct file for new equipment and each Authority to Construct file to modify existing equipment.</p> <p>These files contain title, document number, applicant, and date received. Also included in these files are rule citations, engineering evaluations, and final documents all related to the existing permit conditions and emissions limits set forth in this permit.</p>	Reg. II, Rule 201.1

	<b>Federally Enforceable Conditions</b>	<b>Reg/Rule</b>
34.	<p><b><u>Right of Entry</u></b></p> <p>The source shall allow entry of District, CARB, or U.S. EPA officials for purpose of inspection and sampling, including:</p> <p>A. Inspection of the stationary source, including equipment, work practices, operations, and emission-related activity;</p> <p>B. Inspection and duplication of records required by the permit to operate; and</p> <p>C. Source sampling or other monitoring activities.</p>	Reg. II, Rule 201.1
35.	<p><b><u>Permit Life</u></b></p> <p>The life of this permit shall be five years from the date of issuance.</p>	Reg. II, Rule 201.1 Section VII. B.15
36.	<p><b><u>Administrative Permit Amendment and Minor Permit Modification</u></b></p> <p>Administrative Permit Amendment and Minor Permit Modification are those actions taken by the District as defined in Rule 201.1.</p>	Reg. II, Rule 201.1
37.	<p><b><u>Applicability of Federally Enforceable Conditions</u></b></p> <p>Federally Enforceable Conditions <b><u>do not apply</u></b> to the following permit sections: Equipment Descriptions, and any Design Conditions, Operational Conditions, Special Conditions, or Compliance Testing Requirements designated as District only. Federally Enforceable Conditions <b><u>shall apply</u></b> to Design Conditions, Operational Conditions, Special Conditions, Compliance Testing Requirements, and Emission Limits except as noted above.</p>	Reg. II, Rule 201.1

	Federally Enforceable Conditions	Reg/Rule
38.	<p><b><u>Periodic Monitoring</u></b></p> <p><b><u>Non-Point</u></b></p> <p>National Cement shall conduct testing semi-annually, in accordance with the methodology contained in EPA Method 22 for all non-point sources. This testing will be the basis for determining compliance with the visible emission standard in District Rule 401. If no emissions are observed utilizing Method 22, the non-point source shall be deemed to be in compliance with the visible emission standard. If emissions are observed from any non-point source and that source is not operating under breakdown condition as defined in and allowed for in District Rule 111, National Cement shall conduct testing on that non-point source within 24 hours of the Method 22 testing in accordance with EPA Method 9 to verify compliance with the visible emission standard.</p> <p>NOTE: This requirement does not apply to fugitive emissions resulting from activities not covered by a permit to operate unless the source is subject to District Rule 210.1 (NSR) requirements.</p> <p><b><u>Point</u></b></p> <p>National Cement shall conduct testing semi-annually, in accordance with the methodology contained in EPA Method 22 for all point sources. This testing will be the basis for determining compliance with the visible emission standard in District Rule 401. If no emissions are observed utilizing Method 22, the point source shall be deemed to be in compliance with the visible emission standard. If emissions are observed from any point source and that point source is not operating under breakdown condition as defined in and allowed for in District Rule 111, National Cement shall conduct testing on that point source:</p> <p>A. Within 24 hours of the Method 22 testing in accordance with EPA Method 9 to verify compliance with the visible emission standard. If compliance is not documented:</p> <p>B. Within 30 days of the Method 9 testing in accordance with EPA Method 5 or 5D to verify compliance with the requirements of District Rules 404.1, 405, 406 and/or 210.1.</p>	Reg. II, Rule 201.1

	<b>Federally Enforceable Conditions</b>	<b>Reg/Rule</b>
38.	<p><b><u>Additional Monitoring</u></b></p> <p>Diesel standby and emergency piston engines do not require opacity monitoring if utilizing California diesel or other low-sulfur, low aromatic fuel. Fuel records shall be kept for verification purposes and an operational log for hours of operation.</p> <p>All control equipment shall be inspected annually for proper operation. National Cement shall maintain all records of control equipment maintenance for a period of five years.</p> <p>Monitoring shall be the responsibility of the source; however, a visible emissions inspection or Method 9 conducted by a District inspector may be counted as meeting the requirement for the source to conduct same if the information and records generated by the inspector meets the requirements of the permit and a copy of the records are maintained by the source for a period of five years.</p> <p>Record keeping provisions associated with all monitoring requirements shall include the following information:</p> <ul style="list-style-type: none"> <li>A. Identification of stack or emission point being monitored;</li> <li>B. Operational conditions at the time of monitoring;</li> <li>C. Records of any monitoring conducted, including records of emission or operational parameter values and the date, place and time of sampling or measurement; and</li> <li>D. Where corrective action is triggered, description of the corrective action and the date, time and results of any corrective action.</li> </ul> <p><b><u>Testing</u></b></p> <p>National Cement shall conduct stack testing annually and at other times as specified by U.S. EPA or the District, in accordance with the methodology outlined in EPA Methods 5-8, 7E, 10, 18 or equivalent, to verify compliance with emission limits and the accuracy of any continuous in-stack monitors. The District and U.S. EPA shall be notified at least 30 days in advance of the testing to allow an observer to be present and the report of results shall be transmitted to the District as soon as they are available. (PSD Permit #SE95-01 and District Rule 210.1)</p>	

	Federally Enforceable Conditions	Reg/Rule
38.	<p><b><u>Monitoring, Testing, Record Keeping Requirements</u></b> (Applies to EU 004) (Portland Cement Kilns - Oxides of Nitrogen)</p> <p>Continuous NO<sub>x</sub> emissions monitoring system records and clinker production records for the cement kiln shall be maintained at the facility for a period of at least five years and made readily available to District personnel.</p> <p>Oxides of nitrogen stack testing for purposes of this requirement shall be conducted using EPA Test Method 7E.</p> <p>Stack gas flow rate testing for purposes of this requirement shall be conducted using EPA Test Method 2.</p> <p>The following formula shall be used to convert uncorrected observed NO<sub>x</sub> concentration in ppm to tons per day at standard conditions of 68° F and a gas pressure of 29.92 inches of mercury:</p> $\frac{\text{Tons} \cdot \text{NO}_x}{\text{day}} = (\text{ppmv} \cdot \text{NO}_x) \times \left( \frac{46 \text{ grams}}{\text{mole}} \right) \times (1.56 \times 10^{-7}) \left( \frac{\text{dscf}}{\text{min}} \right) \times (0.0120)$ <p><b><u>Monitoring, Testing, Record Keeping Requirements</u></b> (Applies to EU 018) (Gasoline Storage - Phase I)</p> <p>A. Compliance with the vapor recovery requirements of District Rule 412 shall be demonstrated using California Air Resources Board (CARB) Method 201.1 or 201.1a upon installation and as directed by the Air Pollution Control Officer;</p> <p>B. True vapor pressure shall be determined using Reid vapor pressure ASTM Method No. D-323-82 at storage temperature; and</p> <p>C. The test method to determine vapor tightness of delivery vessels shall be EPA Method 27.</p>	Reg. IV, Rule 412

	<b>Federally Enforceable Conditions</b>	<b>Reg/Rule</b>
38.	<p><b><u>Monitoring, Testing, Record Keeping Requirements</u></b> (Applies to EU 018) (Gasoline Storage &amp; Dispensing - Phase II)</p> <p>Verification that each CARB-certified Phase II Vapor Recovery System meets or exceeds the requirements of tests specified in District Rule 412.1, Subsection V.C. shall be maintained. These test results shall be dated and shall contain the names, addresses, and telephone numbers of person(s) responsible for system installation and testing.</p> <p>Facility shall be pressure tested to determine proper installation and function before startup, and thereafter as directed by the Control Officer if not consistently operated leak-free or a major modification is implemented.</p> <p>Tests shall be conducted in accordance with test procedures found in CARB's "Test Procedures for Determination of the Efficiency of Gasoline Vapor Recovery Systems at Service Stations".</p>	Reg. IV, Rule 412.1

DRAFT

## **List of Insignificant Air Pollutant Emitting Equipment**

Space Heating Equipment

Welding Equipment

Portable IC Engines - California Registered

Small IC Engines < 50 bhp

Boilers & Heaters < 5 MM Btu/hr

Air Conditioning Equipment

Atomic Absorption

Bunsen Burners

Inductively Coupled Plasma

Steam Cleaners, Natural Gas

Water Heaters, Natural Gas

Motor Vehicles as Defined in the CH&SC

Spectro Photometer

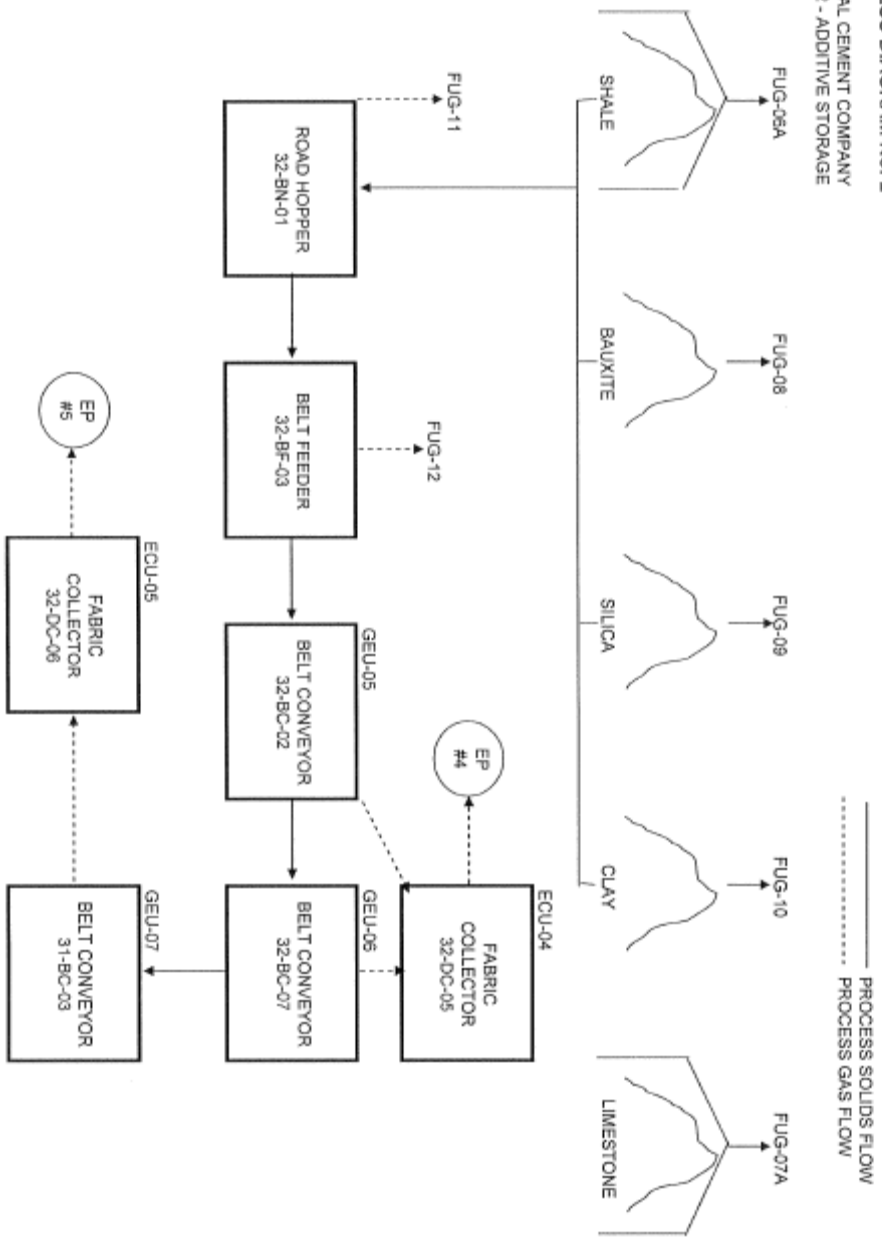
Above Ground Fuel Oil Storage Tanks

Below Ground Diesel Storage Tanks

Small Degreaser



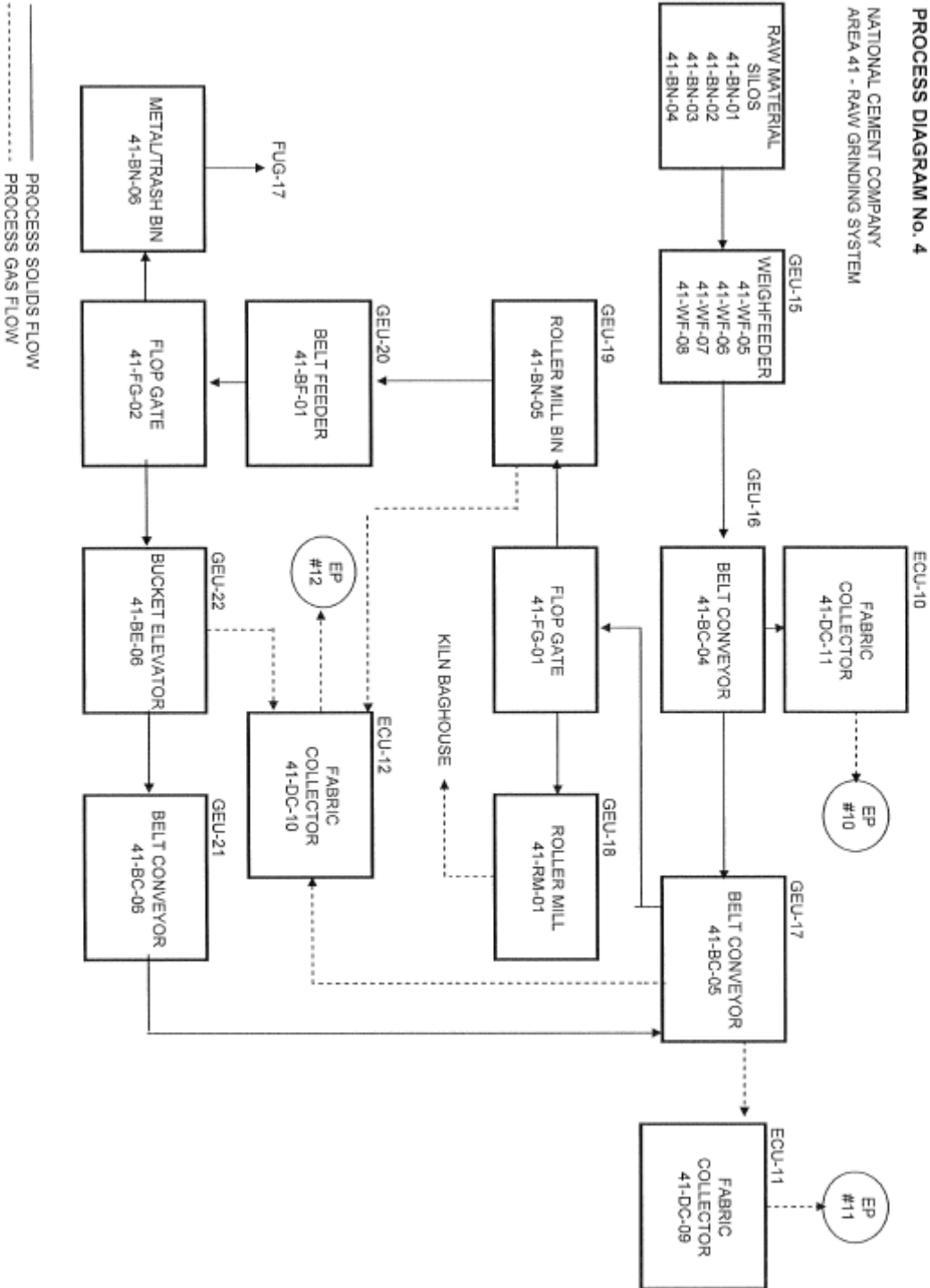
**PROCESS DIAGRAM No. 2**  
**NATIONAL CEMENT COMPANY**  
**AREA 32 - ADDITIVE STORAGE**





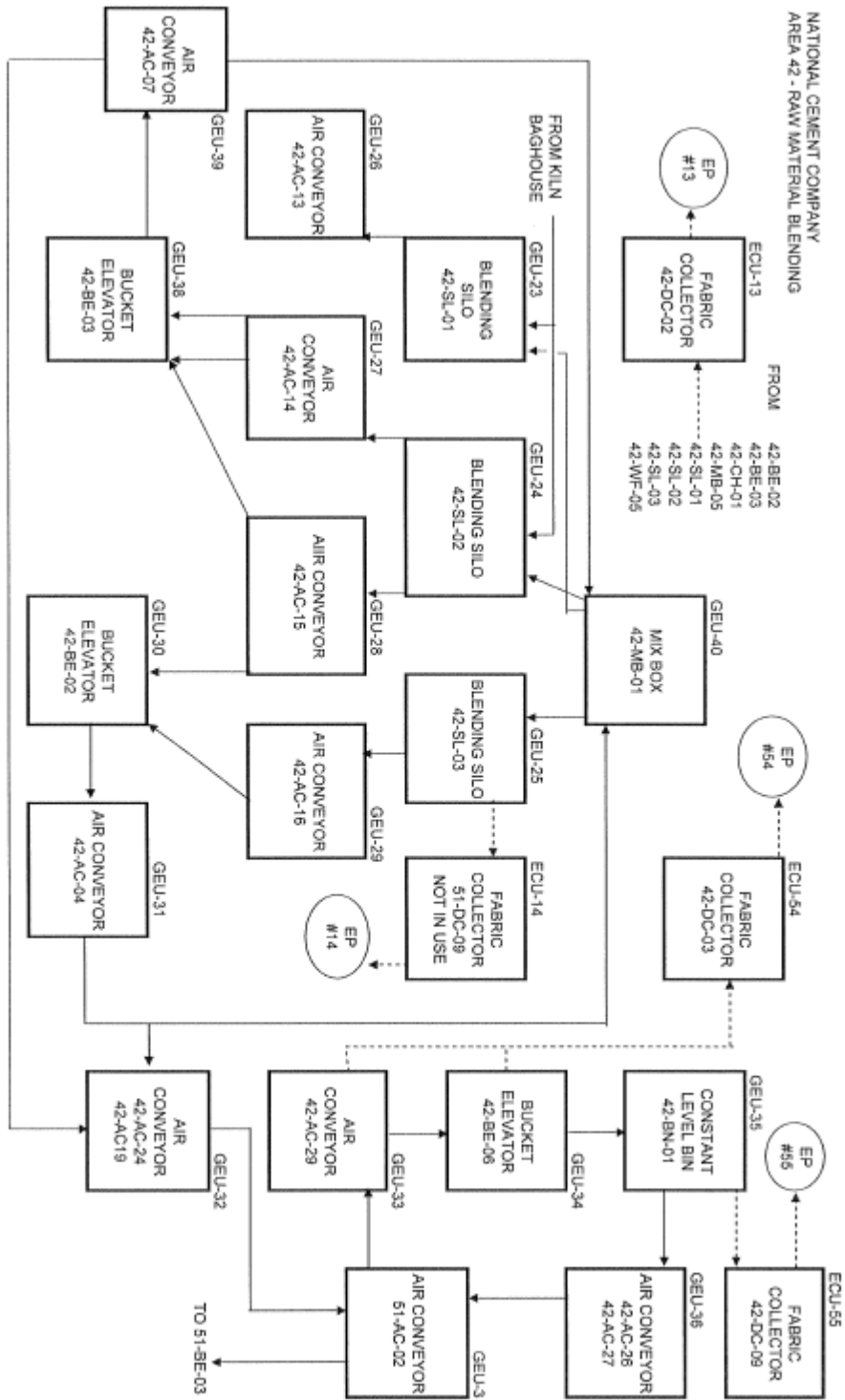
**PROCESS DIAGRAM No. 4**

NATIONAL CEMENT COMPANY  
AREA 41 - RAW GRINDING SYSTEM



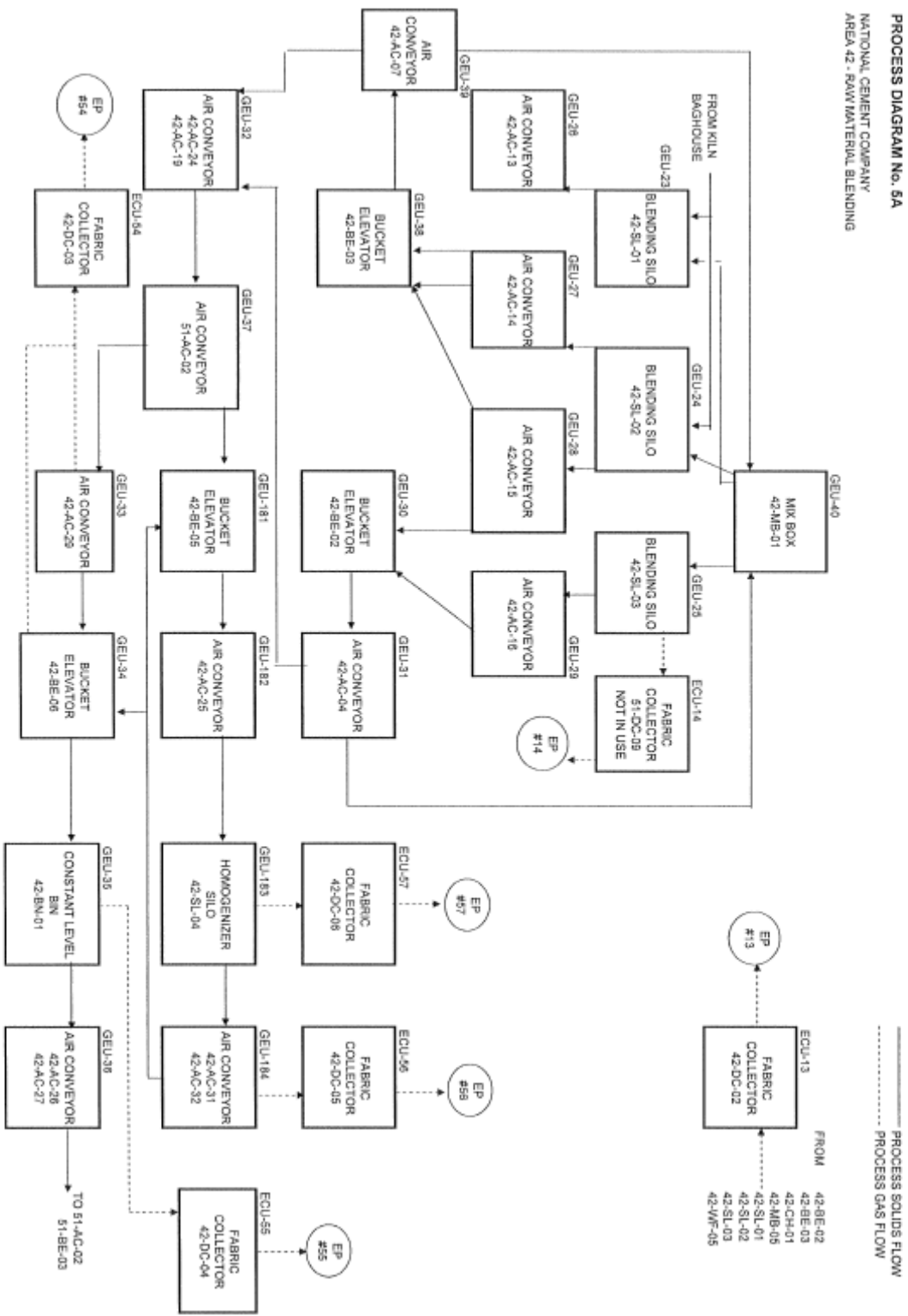
PROCESS DIAGRAM No. 5

NATIONAL CEMENT COMPANY  
AREA 42 - RAW MATERIAL BLENDING

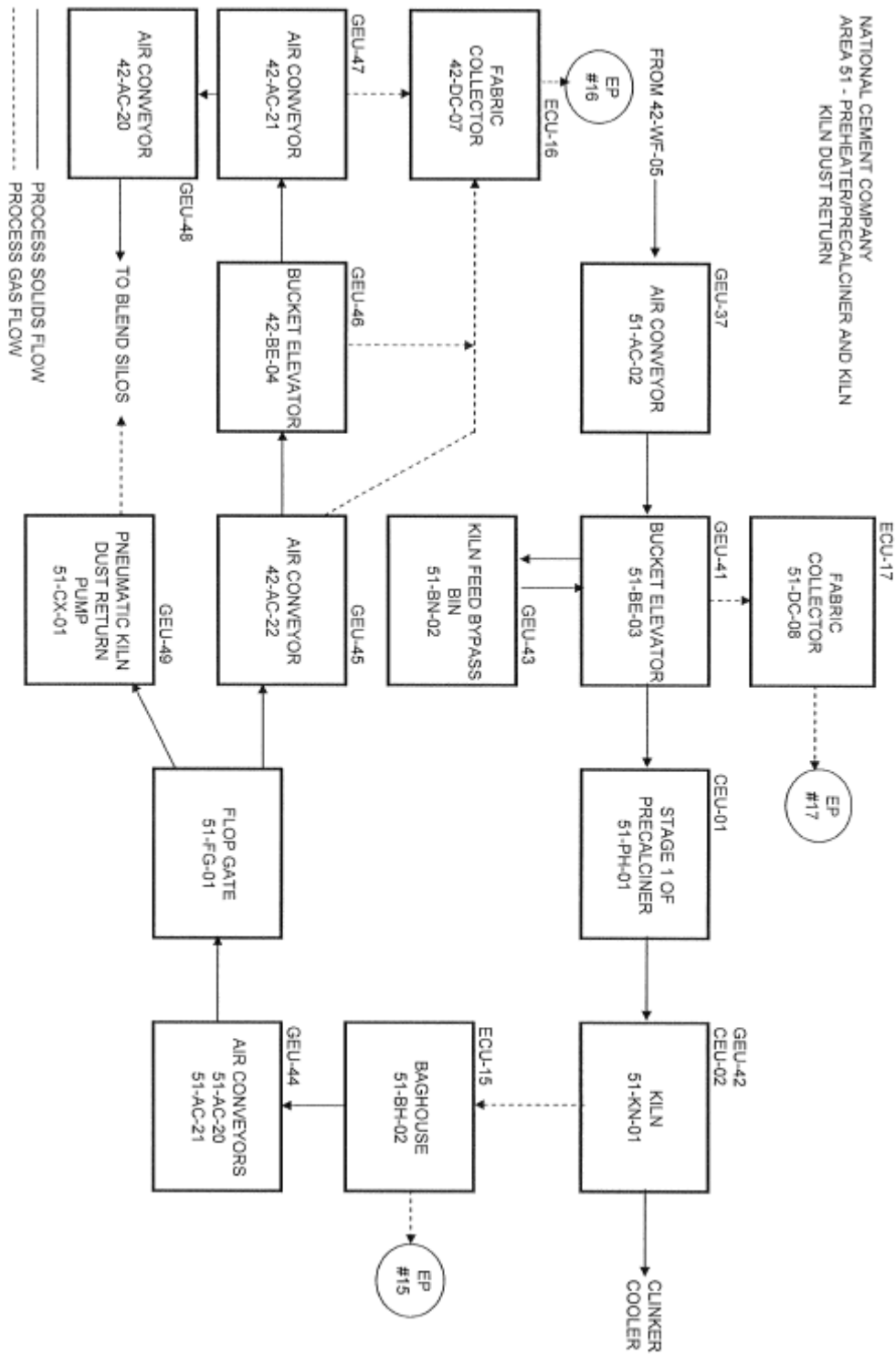


————— PROCESS SOLIDS FLOW  
- - - - - PROCESS GAS FLOW

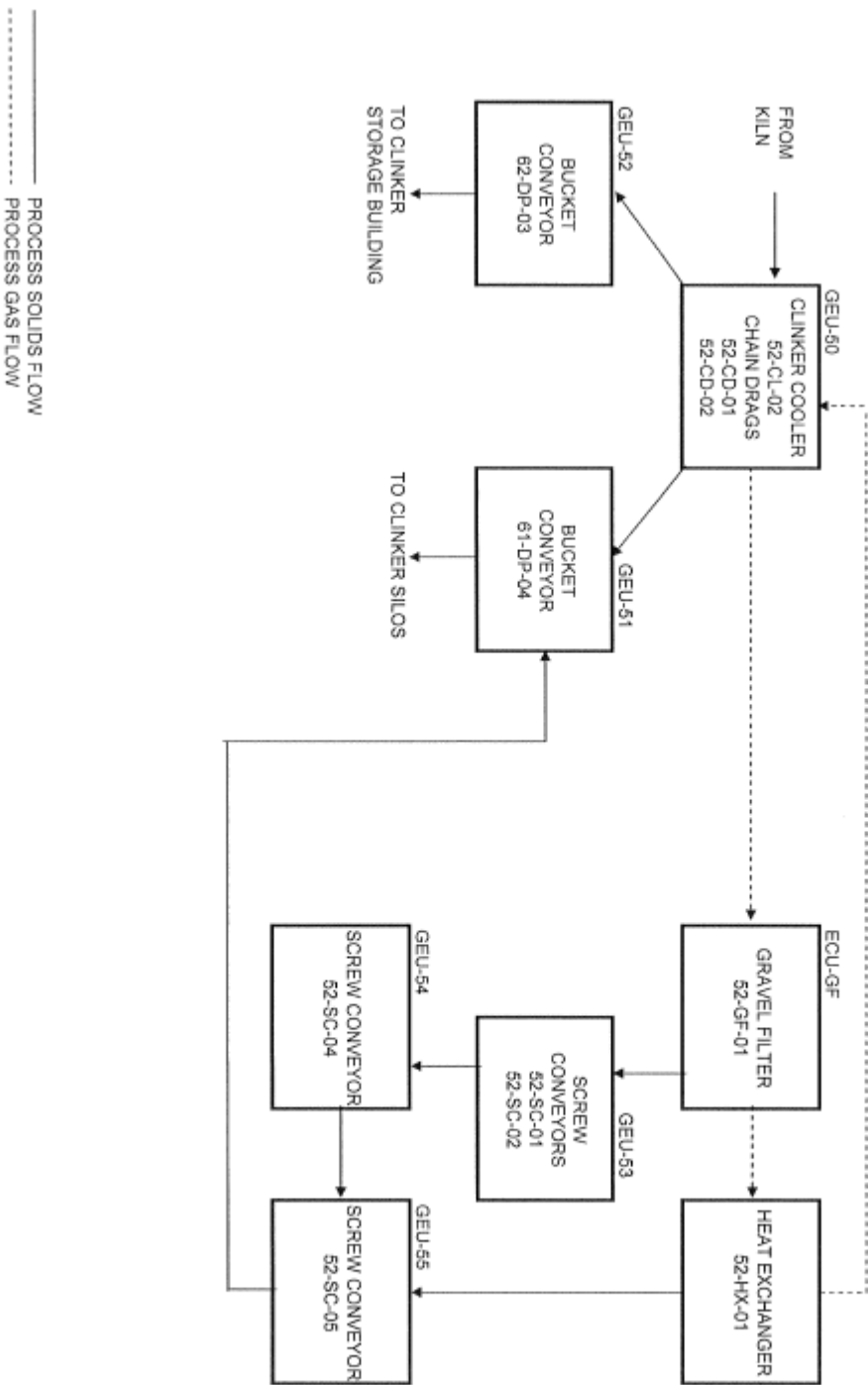
PROCESS DIAGRAM No. 5A  
 NATIONAL CEMENT COMPANY  
 AREA 42 - RAW MATERIAL BLENDING



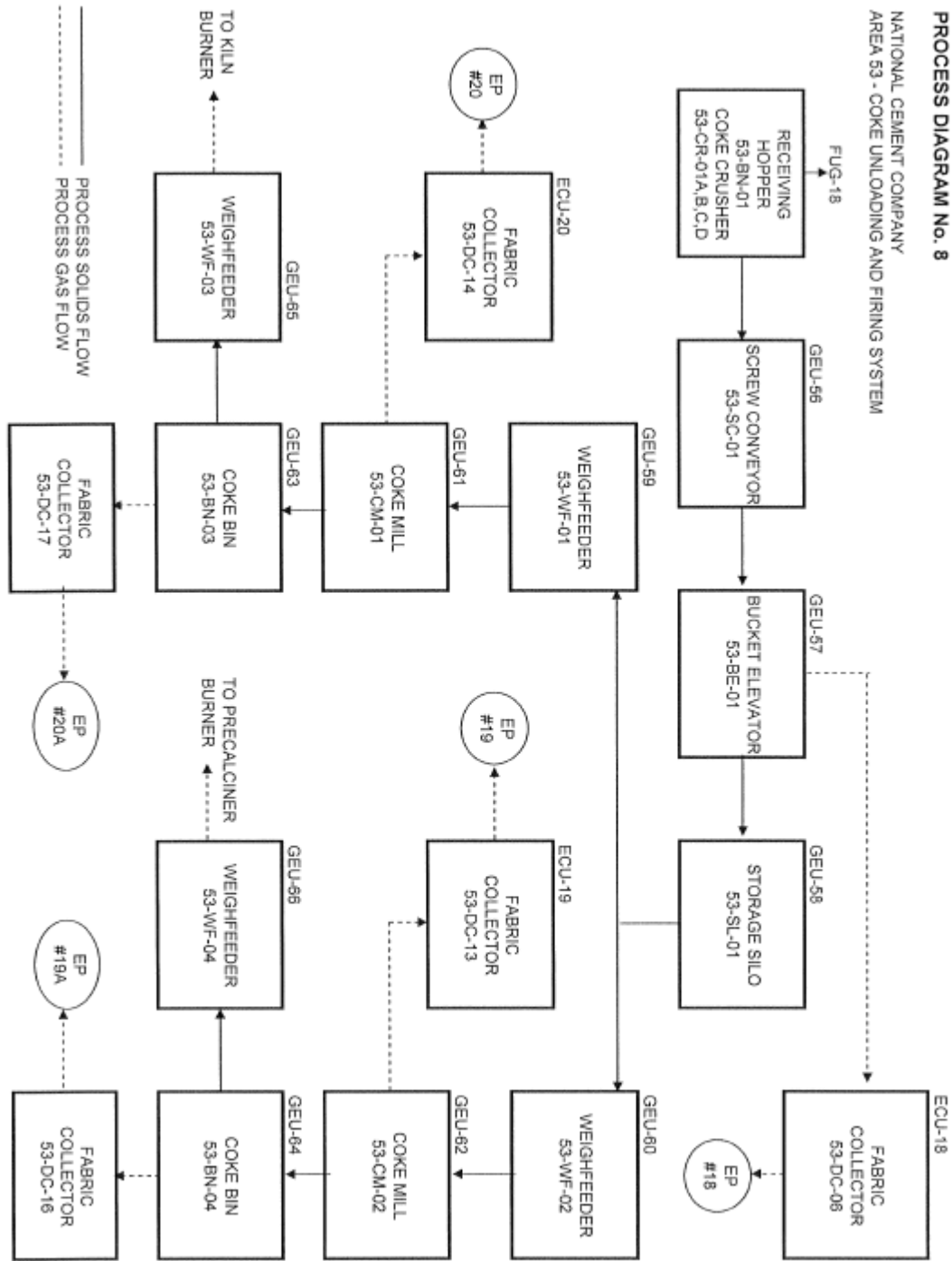
**PROCESS DIAGRAM No. 6**  
 NATIONAL CEMENT COMPANY  
 AREA 51 - PREHEATER/PRECALCINER AND KILN  
 KILN DUST RETURN



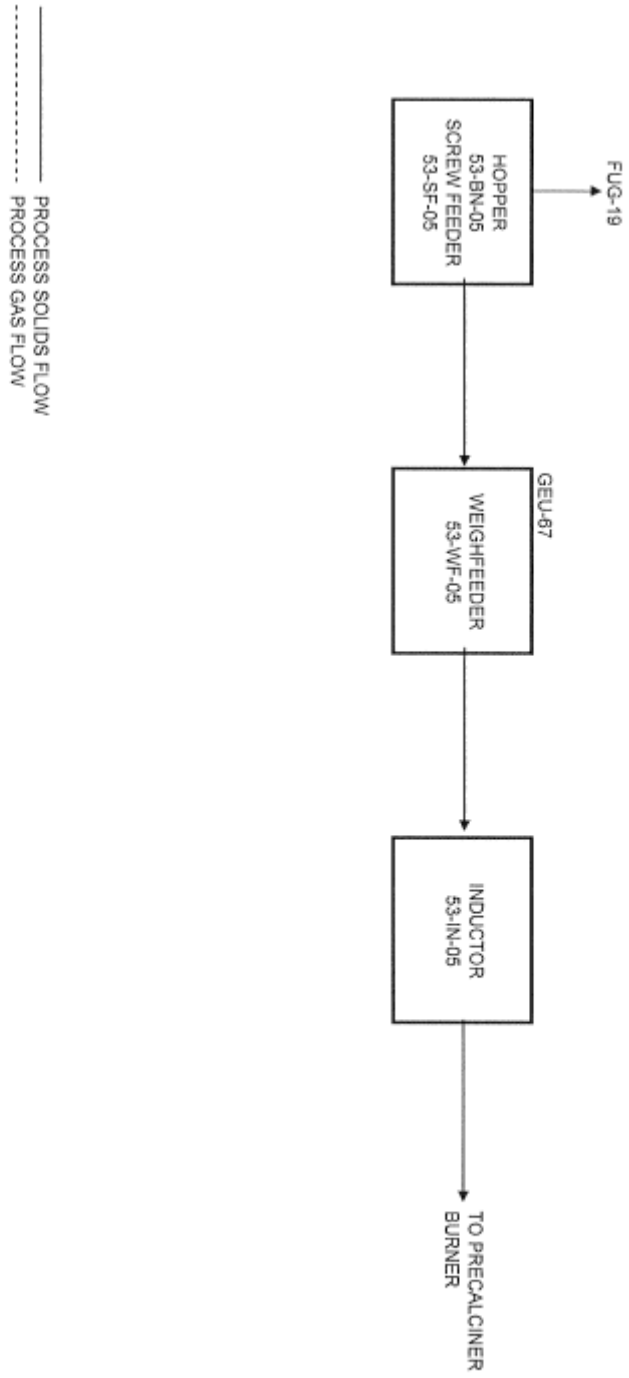
**PROCESS DIAGRAM No. 7**  
 NATIONAL CEMENT COMPANY  
 AREA 52 - CLINKER COOLING



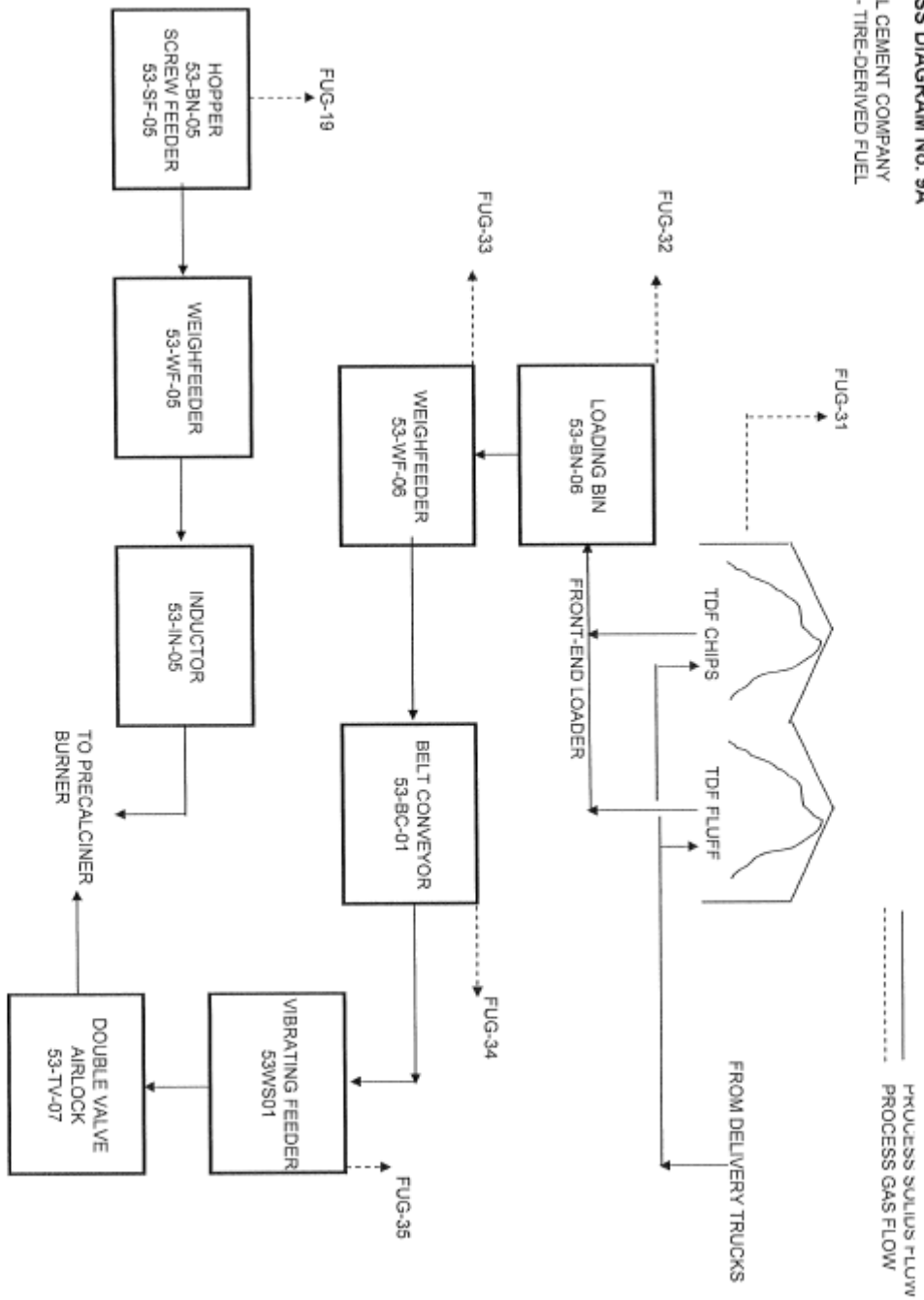
**PROCESS DIAGRAM No. 8**  
 NATIONAL CEMENT COMPANY  
 AREA 53 - COKE UNLOADING AND FIRING SYSTEM



**PROCESS DIAGRAM No. 9**  
NATIONAL CEMENT COMPANY  
AREA 53 - TIRE-DERIVED FUEL

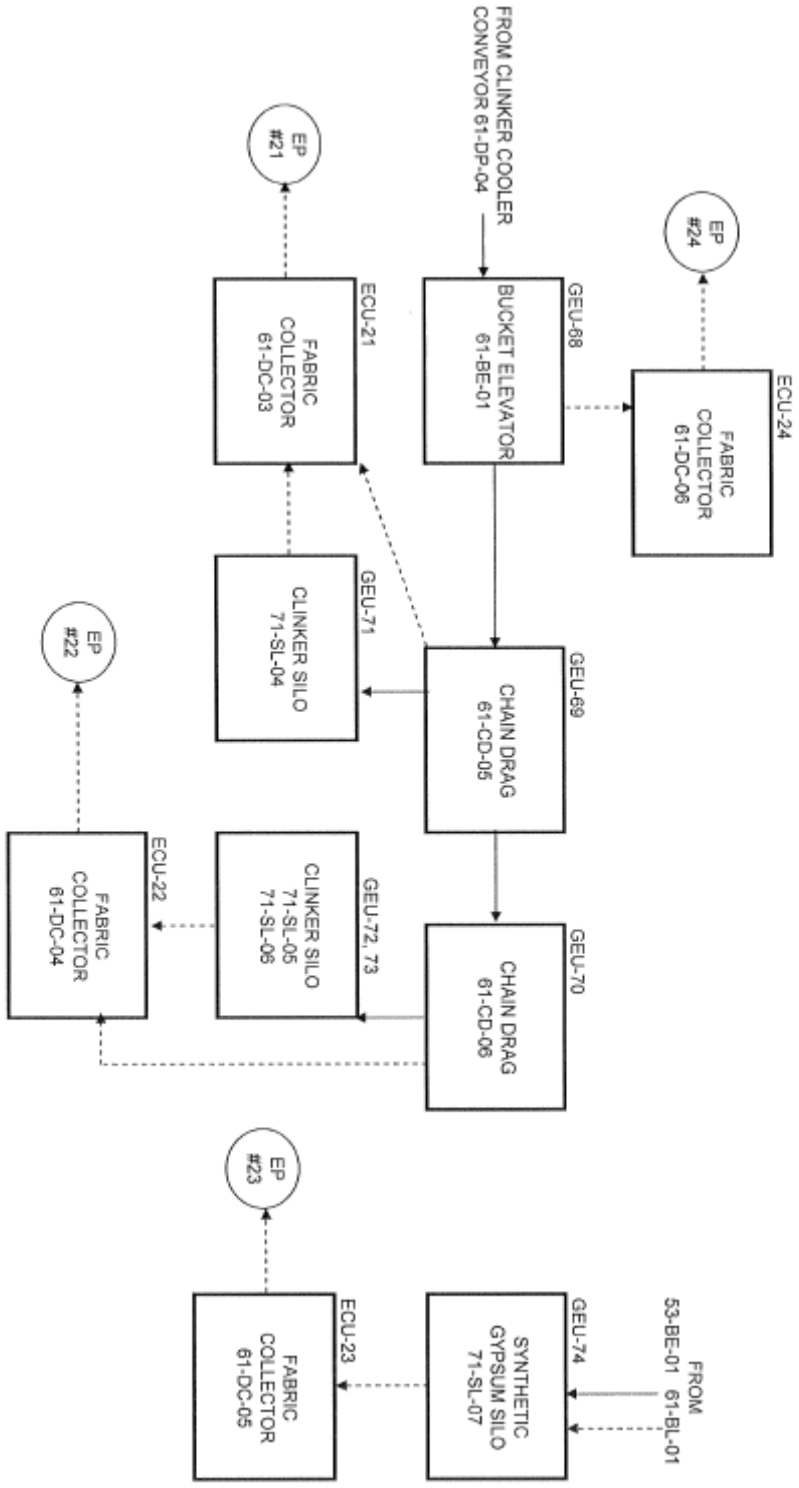


**PROCESS DIAGRAM No. 9A**  
 NATIONAL CEMENT COMPANY  
 AREA 53 - TIRE-DERIVED FUEL



**PROCESS DIAGRAM No. 10**

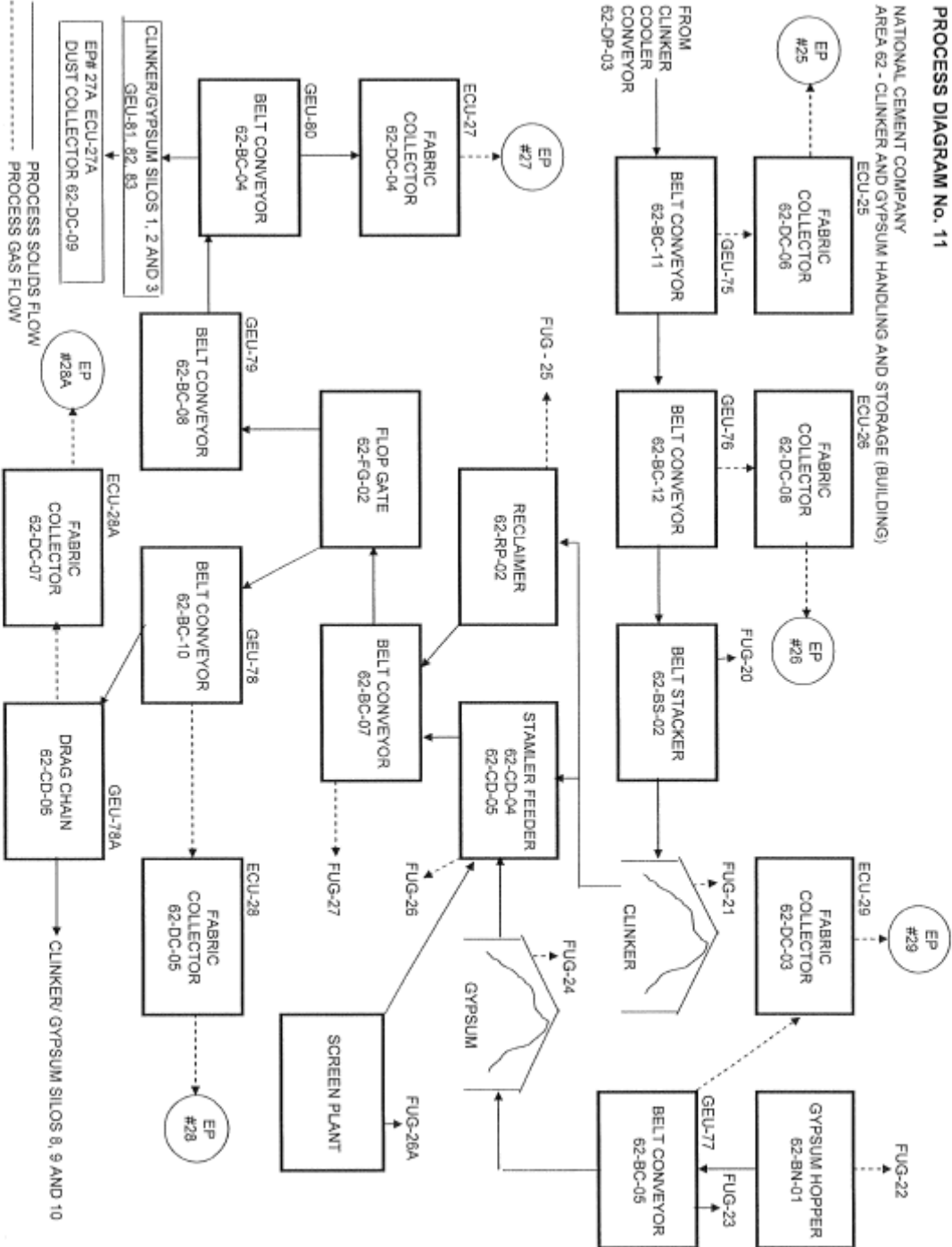
NATIONAL CEMENT COMPANY  
 AREA 61 - CLINKER AND GYPSUM HANDLING AND STORAGE (SILOS)



————— PROCESS SOLIDS FLOW  
 - - - - - PROCESS GAS FLOW

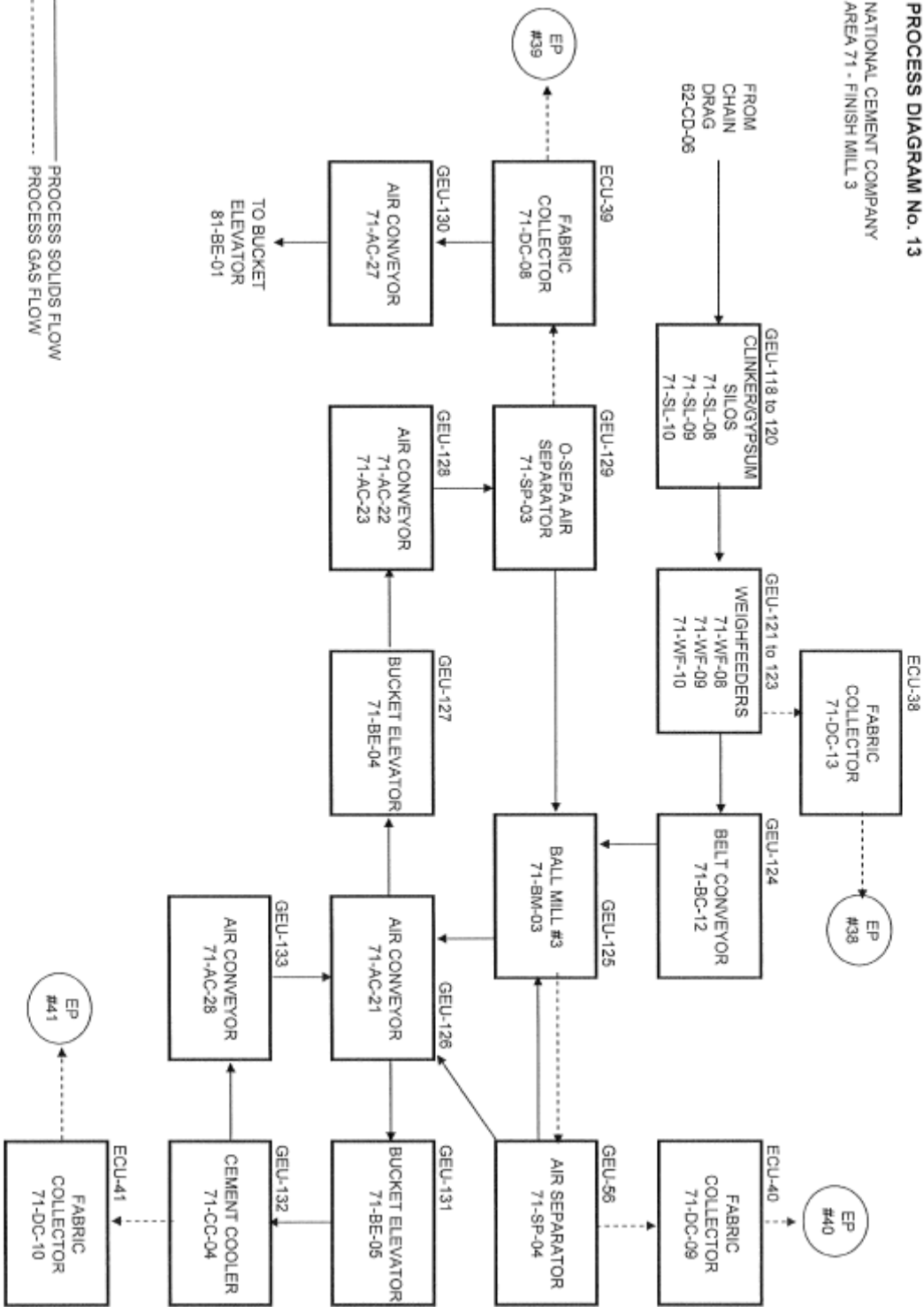
PROCESS DIAGRAM No. 11

NATIONAL CEMENT COMPANY  
 AREA 62 - CLINKER AND GYPSUM HANDLING AND STORAGE (BUILDING)





**PROCESS DIAGRAM No. 13**  
 NATIONAL CEMENT COMPANY  
 AREA 71 - FINISH MILL 3

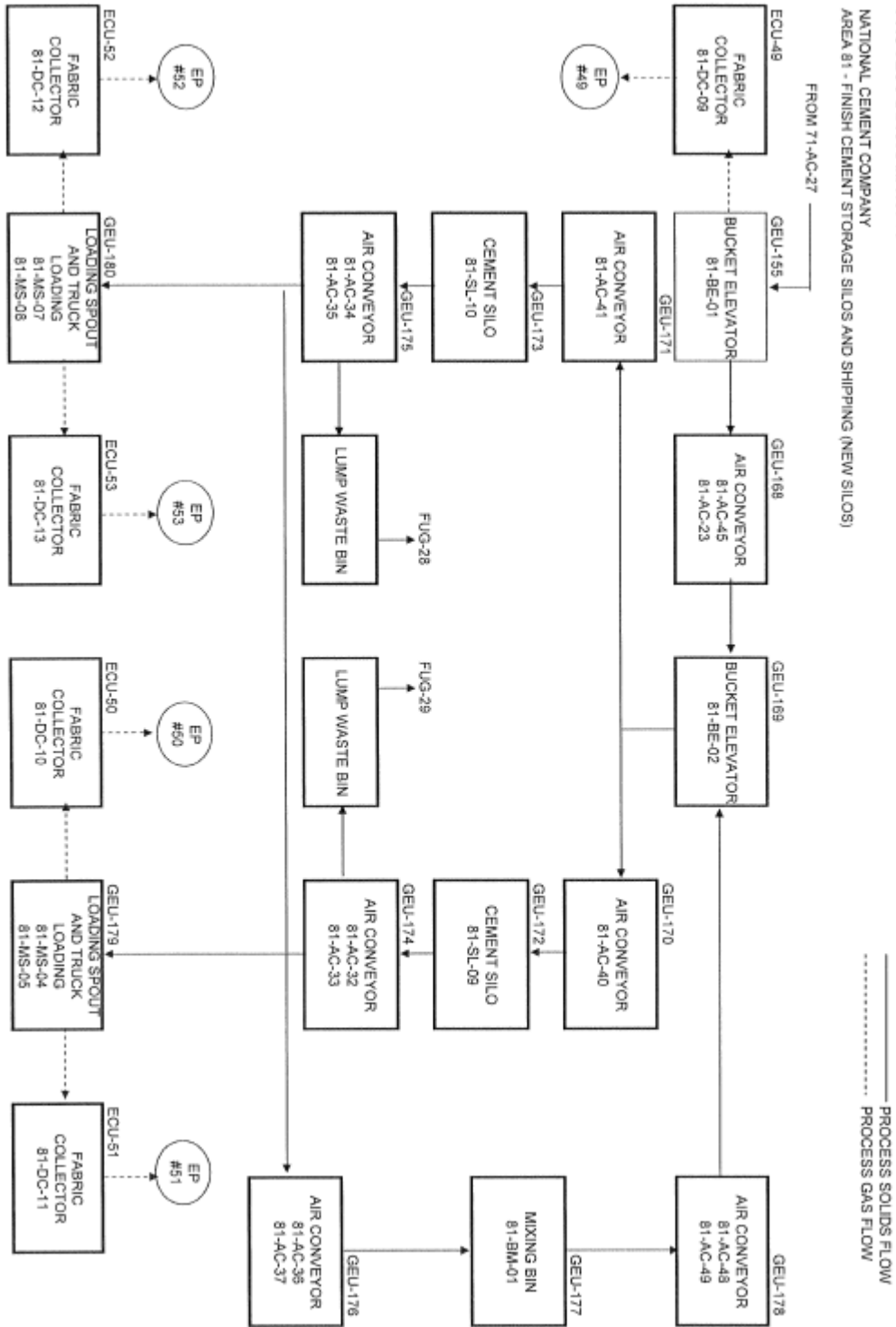


————— PROCESS SOLIDS FLOW  
 - - - - - PROCESS GAS FLOW

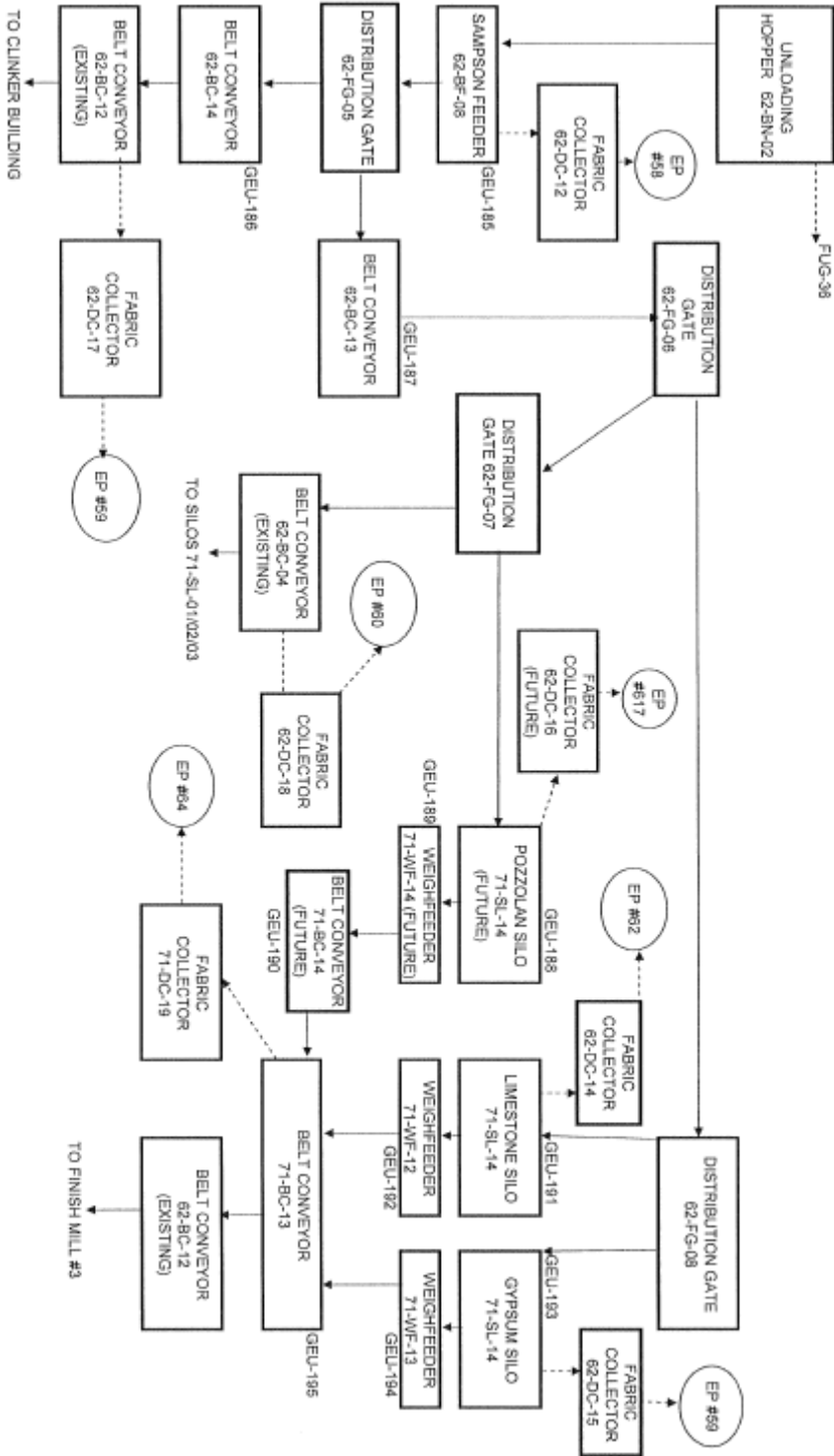


**PROCESS DIAGRAM No. 15**

NATIONAL CEMENT COMPANY  
 AREA 81 - FINISH CEMENT STORAGE SILOS AND SHIPPING (NEW SILOS)



**PROCESS DIAGRAM No. 16**  
 NATIONAL CEMENT COMPANY  
 AREA 62 - FINISH MILL ADDITIVES SYSTEM



**PROCESS DIAGRAM No. 17**  
NATIONAL CEMENT COMPANY



————— PROCESS SOLIDS FLOW  
----- PROCESS GAS FLOW

Emission Unit 001 Permit Conditions

<u>Facility Number</u>	<u>Emissions Unit</u>	<u>Description of Source</u>
1128	001	Primary Crushing & Ore Storage

**Emission Unit Equipment Description/Permit Conditions**

**Federally Enforceable Conditions**

**EQUIPMENT DESCRIPTION:** Primary Crushing & Ore Storage, including following equipment:

- A. Ore receiving hopper (31-BN-01) with dust suppressant sprays;
- B. Wobbler feeder (31-WO-01);
- C. Crusher (31-CR-01) ventilated to item D;
- D. Fabric collector (31-DC-01) serving crusher;
- E. Conveyor (31-BC-01) with dust suppressant sprays at transfer point, oversize material grizzly (31-GZ-01) and flop gate (31-FG-01) with discharge to stacking conveyor 31-BS-01 or belt conveyor 31-BC-03;
- F. Stacking conveyor (31-BS-01);
- G. Belt conveyor (31-BC-03) and flop gate (31-FG-02) with discharge to belt conveyor 32-BC-06 or 31-BC-04;
- H. Belt conveyor (31-BC-04) with discharge to belt conveyor (34-BC-09) and ventilated to dust collector 34-DC-07;
- I. Fabric collector (31-DC-03) with fan (31-FA-03) serving transfer points of belt conveyors 31-BC-01 to 31-BC-03, and 31-BS-01;
- J. Screw conveyor 31-SC-03 serving dust collector 31-DC-03 with discharge to belt conveyor 31-BC-03;
- K. Fabric collector (31-DC-04) with fan (31-FA-04) serving transfer points of belt conveyors 31-DC-03 to 31-BC-04 and 31-BC-06 with dust discharge to belt conveyor 32-BC-06;
- L. Shale storage building (95 SHAL);
- M. Outside silica sand storage pile with wind barrier;
- N. Outside iron ore storage pile with wind barrier; and
- O. Outside clay (alumina bearing materials) storage pile with wind barrier.

**OPERATIONAL CONDITIONS:**

- 1. Wind barriers shall be located to protect storage pile from prevailing wind. (Rule 210.1)
- 2. Height of storage piles shall not exceed height of wind barrier. (Rule 210.1)
- 3. Each fabric collector exhaust stack shall be equipped with provisions for collection of pollutant samples in manner consistent with U. S. EPA test methods. (Rule 210.1)
- 4. Particulate matter emissions from any single source operation shall be no more than 0.1-gr/scf. (Rule 404.1)
- 5. Fabric collectors shall be in operation when crusher and conveyors are in operation. (Rule 210.1)
- 6. Material collected in dust collectors shall be disposed in manner preventing entrainment in atmosphere. (Rule 209)
- 7. Fabric collectors shall have operational differential pressure indicators. (Rule 209)
- 8. Sprays shall be maintained on primary crusher hopper and ore stacker to control dust emissions. (Rule 209)

Emission Unit 001 Permit Conditions

9. Sufficient moisture content of raw materials shall be maintained such that visible emissions from all emission points (except items A, B, C, D, F, J, L, M, N, and O) shall be less than 5% opacity; items L, M, N and O shall be less than 10% opacity (Rule 210.1 BACT); and items A, B, C, D, F, and J shall be less than 20% opacity. (Rule 401)
10. All material conveyors shall be covered/enclosed and shall have no visible emissions. (Rules 209 and 210.1 BACT)
11. Equipment shall be maintained according to manufacturer’s specifications to ensure compliance with emissions limitations. (Rules 209 and 210.1)
12. Compliance with all operational conditions shall be verified by appropriate record keeping, including records of operational data needed to demonstrate compliance. Such records shall be kept on site in readily available format. (Rule 209)
13. No emission resulting from use of this equipment shall cause injury, detriment, nuisance, annoyance to or endanger comfort, repose, health, or safety of any considerable number of persons or public. (Rule 419 and CH&SC, Sec 41700)

**STATE OF CALIFORNIA AIR TOXICS HOT SPOTS REQUIREMENTS:**

Facility shall comply with California Health and Safety Code, Sections 44300 through 44384. (Rule 208.1)

**COMPLIANCE TESTING REQUIREMENTS:**

Should inspection reveal conditions indicative of non-compliance, compliance with hourly and concentration emission limits shall be verified pursuant to Rule 108.1 and EKAPCD Guidelines for Compliance Testing, within 30 days of District request. (Rule 108.1)

**EMISSION LIMITS:**

Maximum emission rate of each air contaminant from this emission unit shall not exceed following limits:

**Particulate Matter:**

Fabric Collector (31-DC-03):	0.011	gr/scf
	0.74	lb/hr
	17.65	lb/day
	3.22	ton/yr
Fabric Collector (31-DC-04):	0.011	gr/scf
	0.72	lb/hr
	17.20	lb/day
	3.14	ton/yr

(Emission limits established pursuant to Rule 210.1, unless otherwise noted.)

Compliance with maximum daily emission limits shall be verified by source operator (with appropriate operational data and record keeping to document maximum daily emission rate) each day source is operated and such documentation of compliance shall be retained and made readily available to District for period of three years. (Rules 209 and 210.1)

Emission Unit 001 Permit Conditions

**SPECIAL CONDITIONS:**

- aa. All equipment shall be designed, installed and operated as described in application for Authority to Construct unless advance approval is granted for alternative.
- bb. Average stockpile size and fugitive dust emissions from storage, crushing, and handling shall not exceed following:

<b>SOURCE</b>	<b>Size(acres)</b>	<b>Maximum Throughput (Tons/Year)</b>	<b>PM<sub>10</sub> Emissions (Tons/Year)</b>
Shale	0.23	1	2
Silica sand	0.1	1	2
Iron Ore	0.1	1	2
Alumina bearing materials (clay)	0.305	1	2

<sup>1</sup>-Combined annual throughput of limestone, shale, sand, iron ore, alumina bearing materials, and iron ore (see PTO 1128002) shall not exceed 1,927,872 tons per year. (Rules 209 and 210.1, and EKAPCD Fugitive Dust Policy #95-02)

<sup>2</sup>-Emission limits for storage and handling of shale, silica sand, iron ore, and clay are included on PTO 1128002.

Written records to demonstrate compliance with these limits, stockpile sizes and throughput limits shall be maintained on a monthly basis and made immediately available for District examination within 30 days of the annual inspection. (Rules 209 and 210.1, 210.3 and EKAPCD Fugitive Dust Policy #95-02)

- cc. Any relaxation in this limit which increases your potential to emit above the applicable PSD threshold will require a full PSD review of the affected source as if construction had not yet commenced.

Emission Unit 002 Permit Conditions

<u>Facility Number</u>	<u>Emissions Unit</u>	<u>Description of Source</u>
1128	002	Secondary Crushing & Ore Storage

**Emission Unit Equipment Description/Permit Conditions**

**Federally Enforceable Conditions**

**EQUIPMENT DESCRIPTION:** Secondary Crushing and Ore Storage, including following equipment:

- A. Limestone, shale, silica sand, iron ore, and alumina bearing materials (clay) storage areas (shared with PTO 1128001);
- B. Belt feeder (32-BF-01) B limestone;
- C. Vibratory feeder (32-VF-02) B limestone;
- D. Belt feeder (32-BF-03) B additives;
- E. Additive hopper (32-BN-02);
- F. Tunnel conveyor (32-BC-02) with discharge to belt conveyor 32-BC-07;
- G. Belt conveyor (32-BC-07) with discharge to belt conveyor (31-BC-03);
- H. Fabric collector (32-DC-05) with fan (32-FA-05) serving belt conveyor 32-BC-07;
- I. Fabric collector (32-DC-04) serving conveyor transfer point;
- J. Fabric collector (32-DC-06) with fan (32-FA-06) serving belt conveyor 31-BC-03;
- K. Belt conveyor (32-BC-06);
- L. Belt stacker (32-BS-02);
- M. Covered limestone storage;
- N. Covered iron ore storage;
- O. Conveyor to additive bins (32-BC-09); and
- P. Second conveyor to additive bins (34-BC-10).

**OPERATIONAL CONDITIONS:**

- 1. Each fabric collector exhaust stack shall be equipped with provisions for collection of pollutant samples in manner consistent with U. S. EPA test methods. (Rule 210.1)
- 2. Particulate matter emissions from any single source operation shall be no more than 0.1 gr/scf. (Rule 404.1)
- 3. Fabric collectors shall be in operation when crusher and conveyors are in operation. (Rule 210.1)
- 4. Material collected in dust collectors shall be disposed in manner preventing entrainment in atmosphere. (Rule 209)
- 5. Dust collectors shall have operational differential pressure indicators. (Rule 209)
- 6. Water and dust suppressant sprays shall be maintained to control dust emissions. (Rule 401)
- 7. Sufficient moisture content shall be maintained such that visible emissions from all emission points shall be less than 5% opacity, except bulk storage which shall be less than 10% opacity. (Rule 210.1 BACT)
- 8. All material conveyors shall be covered/enclosed and shall have no visible emissions. (Rules 209 and 210.1 BACT)

Emission Unit 002 Permit Conditions

- 9. Belt conveyors 32-BF-02 and vibratory feeder 32-VF-02 shall not operate whenever belt feeder 32-BF-03 is operating. (Rules 209 and 210.1)
- 10. Equipment shall be maintained according to manufacturer's specifications to ensure compliance with emissions limitations. (Rules 209 and 210.1)
- 11. Compliance with all operational conditions shall be verified by appropriate record keeping, including records of operational data needed to demonstrate compliance. Such records shall be kept on site in readily available format. (Rule 209)
- 12. No emission resulting from use of this equipment shall cause injury, detriment, nuisance, annoyance to or endanger comfort, repose, health, or safety of any considerable number of persons or public. (Rule 419 and CH&SC, Sec 41700)

**STATE OF CALIFORNIA AIR TOXICS HOT SPOTS REQUIREMENTS:**

Facility shall comply with California Health and Safety Code, Sections 44300 through 44384. (Rule 208.1)

**COMPLIANCE TESTING REQUIREMENTS:**

Should inspection reveal conditions indicative of non-compliance, compliance with hourly and concentration emission limits shall be verified pursuant to Rule 108.1 and EKAPCD Guidelines for Compliance Testing, within 30 days of District request. (Rule 108.1)

**EMISSION LIMITS:**

Maximum emission rate of each air contaminant from this emission unit shall not exceed following limits:

**Particulate Matter (of PM<sub>10</sub>):**

Fabric Collector (32-DC-05):	0.011	gr/scf
	0.29	lb/hr
	7.01	lb/day
	1.28	ton/yr
Fabric Collector (32-DC-06):	0.011	gr/scf
	0.40	lb/hr
	9.50	lb/day
	1.73	ton/yr

(Emission limits established pursuant to Rule 210.1, unless otherwise noted.)

**SPECIAL CONDITIONS:**

- aa. All equipment shall be designed, installed and operated as described in application for Authority to Construct unless advance approval is granted for alternative.
- bb. Average stockpile size and fugitive dust emissions from storage, crushing, and handling shall not exceed following:

Emission Unit 002 Permit Conditions

<b>SOURCE</b>	<b>Size (acres )</b>	<b>Maximum Throughput (Tons/Year)</b>	<b>PM<sub>10</sub> Emissions (Tons/Year)</b>
Limestone B (secondary crusher & inside storage):	2.65	<sup>1</sup>	6.976
Iron Ore (A-pile)	0.1	<sup>1</sup>	0.159
Iron Ore (B-pile)	0.1	<sup>1</sup>	0.163
Shale	0.23	<sup>1</sup>	0.059
Silica sand	0.1	<sup>1</sup>	0.592
Alumina bearing materials (clay)	0.305	<sup>1</sup>	0.652
<b>TOTAL:</b>			<b>8.601</b>

<sup>1</sup>-Combined annual throughput of limestone, shale, sand, alumina bearing materials, and iron ore (see PTO 1128001) shall not exceed 1,927,872 tons per year. (Rules 209 and 210.1, and EKAPCD Fugitive Dust Policy #95-02)

Written records to demonstrate compliance with these limits, stockpile sizes and throughput limits shall be maintained on a monthly basis and made immediately available for District examination within 30 days of the annual inspection. (Rules 209 and 210.1, 210.3 and EKAPCD Fugitive Dust Policy #95-02)

- cc. Any relaxation in this limit which increases your potential to emit above the applicable PSD threshold will require a full PSD review of the affected source as if construction had not yet commenced.

Emission Unit 003 Permit Conditions

<u>Facility Number</u>	<u>Emissions Unit</u>	<u>Description of Source</u>
1128	003	Raw Material Reclaiming, Grinding, & Storage

**Emission Unit Equipment Description/Permit Conditions**

**Federally Enforceable Conditions**

**EQUIPMENT DESCRIPTION:** Raw Material Reclaiming, Grinding & Storage, including following equipment:

- A. Reclaimer (34-RP-01);
- B. Belt conveyor (34-BC-07);
- C. Flop gate (34-FG-01) ventilated to item fabric collector 34-DC-05;
- D. Fabric collector (34-DC-05) serving flop gate (34-FG-01) and transfer point of belt conveyor 34-BC-07 to belt conveyor 34-BC-11 or belt conveyor 34-BC-08;
- E. Belt conveyor (34-BC-08) ventilated to fabric collector 34-DC-06;
- F. Belt conveyor 34-BC-11;
- G. One 3500 acfm 769 square feet fabric collector, 34-DC-06, serving belt conveyors 34-BC-09 at discharge end (item J), 34-BC-10 (item M) and 34-BC-13;
- H. Feed positioner (34-FP-01);
- I. Iron ore hopper;
- J. Belt conveyor (34-BC-12) to conveyor (34-BC-09) ventilated to fabric collector 34-DC-07;
- K. Fabric collector 34-DC-07 with fan 34-FA-07 serving transfer points 31-BC-04 to 34-BC-09;
- L. Feed positioner (34-FP-02);
- M. Belt conveyor (34-BC-10);
- N. Belt conveyor (34-BC-13);
- O. Iron ore storage silo (41-BN-01) ventilated to 41-DC-04;
- P. Weigh feeder (41-WF-05);
- Q. Limestone storage silo (41-BN-02) ventilated to 41-DC-04;
- R. Weigh feeder (41-WF-06)
- S. Silica storage silo (41-BN-03) ventilated to 41-DC-04;
- T. Weigh feeder (41-WF-07);
- U. Shale storage bin (41-BN-04) ventilated to 41-DC-04;
- V. Weigh feeder (41-WF-08);
- W. Fabric collector (41-DC-04) serving storage silos and bin;
- X. Belt conveyor (41-BC-04);
- Y. Fabric collector (41-DC-11) serving transfer points from weigh feeders to belt conveyor 41-BC-04;
- Z. Belt conveyor 41-BC-05;
- AA. Fabric collector (41-DC-09) with fan (41-FA-09) serving transfer points from belt conveyors 41-BC-04 or 41-BC-06 to belt conveyor 41-BC-05;
- BB. Flop gate (41-FG-01) for reject tramp metals;
- CC. 25 ton capacity roller mill surge bin (41-BN-05);
- DD. Belt feeder (41-BF-01);
- EE. Flop gate (41-FG-02) for reject tramp metals;

## Emission Unit 003 Permit Conditions

- FF. Tramp metal bin (41-BN-06);
- GG. Roller mill (41-RM-01);
- HH. Dynamic separator (41-SP-02);
- II. Vibrating feeder for reject material (41-VF-01) with discharge to bucket elevator 41-BE-06;
- JJ. Bucket elevator (41-BE-06) with discharge to belt conveyor 41-BC-06;
- KK. Belt conveyor (41-BC-06) with discharge to belt conveyor 41-BC-05;
- LL. Fabric collector (41-DC-10) with fan (41-FA-10) serving bucket elevator BC-06, belt conveyor 41-BE-05, and surge bin 41-BN-05;
- MM. Air conveyor (42-AC-22) from kiln fabric collector 51-BH-02 hopper to bucket elevator 42-BE-04;
- NN. Bucket elevator 42-BE-04;
- OO. Air conveyor (42-AC-21) from bucket elevator 42-BE-04 to air conveyor 42-AC-20;
- PP. Air conveyor (42-AC-20) with distribution to storage silos 42-SL-01, >-02, and >-03;
- QQ. Fabric collector (51-DC-09 listed on permit 1128042) serving airslide 42-AC-20, air slide 42-AC-21, and blend silo 42-SL-03;
- RR. Distribution gate (42-GA-04) from screw pump 51-CX-01 to blend silos 42-SL-01 and 02 (backup to air conveyor system);
- SS. Fabric collector (42-DC-07) with fan (42-FA-07) serving dust pump 51-CX-01, airslide 42-AC-22, bucket elevator 42-BE-04, and screw conveyor 51-CX-01;
- TT. 100-ton spent catalyst storage silo (41-BN-08 – 3600-cubic feet);
- UU. Fabric collector (41-DC-08) serving spent catalyst storage silo with fan (41-FA-08) with 1500-scfm exhaust flow rate;
- VV. Rotary feeder (41-RF-08) and 1-hp motor; and
- WW. Material induction system including blower (41-BL-08) with 75-hp motor, inductor (41-IN-08) conveying material into roller mill separator (41-SP-02) and associated piping.

### **OPERATIONAL CONDITIONS:**

1. Fabric collector 41-DC-08 shall be equipped with operational differential pressure indicator. (Rule 210.1)
2. Fabric collector 41-DC-08 shall be equipped with pulse-jet cleaning mechanism. (Rule 210.1)
3. Particulate matter emissions from fabric collector 41-DC-08 exhaust shall not exceed 0.01-gr/scf. (Rule 210.1 BACT Requirement)
4. Particulate matter emissions from any single source operation shall be no more than 0.1-gr/scf. (Rule 404.1)
5. Visible emissions from fabric collector 41-DC-08 serving spent catalyst storage silo shall not exceed 5% opacity or ¼ Ringelmann. (Rule 210.1 BACT Requirement)
6. Maximum inlet dust collector (34-DC-06) temperature shall not exceed maximum continuous filter temperature. (Rule 210.1)
7. Visible emissions from any single emission point shall be less than 10% opacity. (Rule 422, Subpart F)
8. Visible emissions from all emission points shall be less than 5% opacity except bulk storage, which shall be less than 10% opacity. (Rule 210.1 BACT)
9. Each dust collector compartment shall be equipped with operational differential pressure indicator. (Rule 210.1)
10. All conveyor transfer points and airslides shall be completely enclosed. (Rule 210.1)
11. Fabric dust collectors shall be in operation when associated equipment is operated. (Rule 210.1)
12. All piping, ducting, and connections shall be leak-tight and have no visible emissions. (Rule 210.1)

Emission Unit 003 Permit Conditions

13. All conveyors transporting dry material shall be covered, leak-tight, have no visible emissions. (Rule 210.1)
14. Material collected in fabric dust collectors shall be disposed of in manner preventing entrainment in atmosphere. (Rule 210.1)
15. Equipment shall be maintained according to manufacturer's specifications. (Rules 209 and 210.1)
16. Compliance with all operational conditions shall be verified by appropriate recordkeeping, including records of operational data needed to demonstrate compliance. Such records shall be kept on site in readily available format. (Rule 210.1)
17. Emission from use of this equipment shall not cause injury, detriment, nuisance, annoyance to or endanger comfort, repose, health, or safety of any considerable number of persons or public. (Rule 419 and CH&SC, Sec 41700)
18. Each fabric collector exhaust stack shall be equipped with provisions for collection of pollutant samples in manner consistent with U. S. EPA test methods. (Rule 210.1)
19. Stack for fabric collector 41-DC-08 shall only be required if visible emissions exceed 5% opacity or ¼ Ringelmann 1 and District requires a stack test to show compliance with Rules 210.1 and 108.1. (Rule 108.1 and 210.1)

**STATE OF CALIFORNIA AIR TOXICS HOT SPOTS REQUIREMENTS:**

Facility shall comply with California Health and Safety Code Sections 44300 through 44384. (Rule 208.1)

**COMPLIANCE TESTING REQUIREMENTS:**

Should inspection reveal conditions indicative of non-compliance, compliance with any emission limitations shall be verified, within 60 days of District request. Test results shall be submitted to EKACPD within 30 days after test completion. (Rule 108.1 and 210.1)

**EMISSION LIMITS:**

Emission rate of each air contaminant from this permit unit shall not exceed following limits:

**Particulate Matter (PM<sub>10</sub>):**

Fabric Collector (34-DC-05) (@ 2,000-acfm)	0.01	gr/acf
	0.17	lb/hr
	4.11	lb/day
	0.75	ton/yr
Fabric Collector(34-DC-06) (@ 3,450-acfm)	0.01	gr/acf
	0.29	lb/hr
	7.01	lb/day
	1.28	ton/yr
Fabric Collector (34-DC-07) (@ 4,600-acfm)	0.011	gr/acf
	0.43	lb/hr
	10.41	lb/day
	1.90	ton/yr

Emission Unit 003 Permit Conditions

**Particulate Matter (PM<sub>10</sub>):**

Fabric Collector (41-DC-04) (@ 1,500-acfm)	0.01 gr/acf 0.13 lb/hr 1.54 lb/day 0.28 ton/yr
Fabric Collector (41-DC-09) (@ 3,150-acfm)	0.011 gr/acf 0.30 lb/hr 7.13 lb/day 1.30 ton/yr
Fabric Collector (41-DC-10) (@ 11,730-acfm)	0.011 gr/acf 1.11 lb/hr 26.53 lb/day 4.84 ton/yr
Fabric Collector (41-DC-11) (@ 2,000-acfm)	0.011 gr/acf 0.19 lb/hr 4.53 lb/day 0.83 ton/yr
Fabric Collector (42-DC-07) (@ 4,350-acfm)	0.011 gr/acf 0.41 lb/hr 9.84 lb/day 1.80 ton/yr
Spent catalyst fines Storage Silo (41-DC-08) Fabric Collector (@ 1,500-scfm)	0.01 gr/scf (Rule 210.1 BACT Requirement) 0.13 lb/hr 0.26 lb/day 0.05 ton/yr

(Emissions limits established pursuant to Rule 210.1, unless otherwise noted.)

Compliance with maximum daily emission limits shall be verified by source operator (with appropriate operational data and record keeping to document maximum daily emission rate) each day source is operated and such documentation of compliance shall be retained and made readily available to District for period of three years. (Rules 209 and 210.1)

**SPECIAL CONDITIONS:**

- aa. This source is exempt from PSD review because of PM<sub>10</sub> emission reductions made from existing operations concurrently with new equipment installation. Any relaxation in this limit which increases your potential to emit above the applicable PSD threshold will require a full PSD review of the affected source as if construction had not yet commenced.

Emission Unit 005 Permit Conditions

<u>Facility Number</u>	<u>Emissions Unit</u>	<u>Description of Source</u>
1128	005	Petroleum Coke Fuel System

**Emission Unit Equipment Description/Permit Conditions**

**Federally Enforceable Conditions**

**EQUIPMENT DESCRIPTION:** Petroleum Coke Fuel System, including following equipment:

- A. Truck dump hopper (53-BN-01) ventilated to item E;
- B. Roll crusher (53-CR-01A, -01B, -01C and -01D), with four drive motors rated at 20 hp each;
- C. Storage silo with vent filter (53-SL-01);
- D. Two screw conveyors (53-SC-01 and 53-SC-02) and feed elevator (53-BE-01) ventilated to item E;
- E. One fabric collector (53-DC-06) serving receiving and storage;
- F. Two weigh feeders (south, 53-WF-01) and (north, 53-WF-02);
- G. Two C-E Raymond mills (south, 53-CM-01) and (north, 53-CM-02) with 53-CM-02 pneumatically conveyed to item H;
- H. 16,000 acfm fabric filter dust collector (53-DC-13) with pulse-jet cleaning mechanism, and fan (53-FA 13) receiving exhaust from #2 coke mill, item G;
- I. Pulverized coke bin #2 (53-BN-04) with integral 3,000 acfm fabric filter (53-DC-16);
- J. Calciner burner coke metering and conveying system;
- K. 16,000 acfm fabric filter dust collector (53-DC-14) serving coke mill #1;
- L. Screw conveyor (53-SC-06);
- M. Coke inductor (53-IN-02) and blower (53-BL-04);
- N. Pulverized coke bin #1 (53-BN-03) with integral 3,000 acfm fabric filter (53-DC-17);
- O. Kiln burner coke metering and conveying system (53-WF-03) including primary air fan 53-BL-02; and
- P. Two coke mill 3.5mm Btu/hr booster heaters, Hauck 784 series, serving coke mill.

**OPERATIONAL CONDITIONS:**

1. Opacity of stack emission shall not equal or exceed 5% or Ringelmann No. 3. (Rule 210.1 BACT Requirement)
2. Roll crusher shall have no visible emissions. (Rule 210.1)
3. All conveyor transfer points and air slides shall be completely enclosed and ducted to operational dust collector. (Rule 210.1)
4. Equipment shall be maintained according to manufacturer=s specifications to ensure compliance with emissions limitations. (Rules 209 and 210.1)
5. Fines collected in dust collectors shall be returned to process. (Rules 209 and 210.1)
6. Compliance with operational conditions shall be verified by appropriate record keeping, including records of operational data needed to demonstrate compliance. Such records shall be kept on site in readily available format. (Rule 209)
7. No emission resulting from use of this equipment shall cause injury, detriment, nuisance, annoyance to or endanger comfort, repose, health, or safety of any considerable number of persons or public. (Rule 419 and CH&SC, Sec 41700)

**STATE OF CALIFORNIA AIR TOXICS HOT SPOTS REQUIREMENTS:**

Facility shall comply with California Health and Safety Code, Sections 44300 through 44384. (Rule 208.1)

**COMPLIANCE TESTING REQUIREMENTS:**

Should inspection reveal conditions indicative of non-compliance, compliance with hourly and concentration emission limits shall be verified pursuant to Rule 108.1 and EKAPCD Guidelines for Compliance Testing, within 30 days of District request. (Rule 108.1)

**EMISSION LIMITS:**

Maximum emission rate of each air contaminant from this emission unit shall not exceed following limits:

**Particulate Matter (PM<sub>10</sub>):**

Calciner Coke Feed Dust Collector (53-DC-13)	0.01 gr/dscf (Rule 210.1 BACT Requirement)
	1.37 lb/hr
	32.88 lb/day
	6.00 ton/yr
Kiln Coke Feed Dust Collector (53-DC-14)	0.01 gr/dscf (Rule 210.1 BACT Requirement)
	0.65 lb/hr
	15.67 lb/day
	2.86 ton/yr
From Dust Collector (53-DC-06)	0.20 gr/dscf (Rule 404.1)
	5.22 lb/hr (Rule 404.1)
	125.2 lb/day (Rule 404.1)
	22.86 ton/yr (Rule 404.1)
Pulverized Coke Bin #2 Dust Collector (53-DC-16)	0.01 gr/dscf (Rule 210.1 BACT Requirement)
	0.12 lb/hr
	2.94 lb/day
	0.54 ton/yr
Pulverized Coke Bin #1 Dust Collector (53-DC-17)	0.01 gr/dscf (Rule 210.1 BACT Requirement)
	0.12 lb/hr
	2.94 lb/day
	0.54 ton/yr

(Emission limits established pursuant to Rule 210.1, unless otherwise noted.)

Compliance with maximum daily emission limits shall be verified by source operator (with appropriate operational data and record keeping to document maximum daily emission rate) each day source is operated and such documentation of compliance shall be retained and made readily available to District for period of three years. (Rules 209 and 210.1)

**SPECIAL CONDITIONS:**

- aa. Permittee shall maintain records of kiln operation. (Rules 209 and 210.1)
- bb. Permittee shall maintain clean and in good repair, 3.646 acres of paved roads and traffic areas as described below and on attached map. (Rule 210.1)

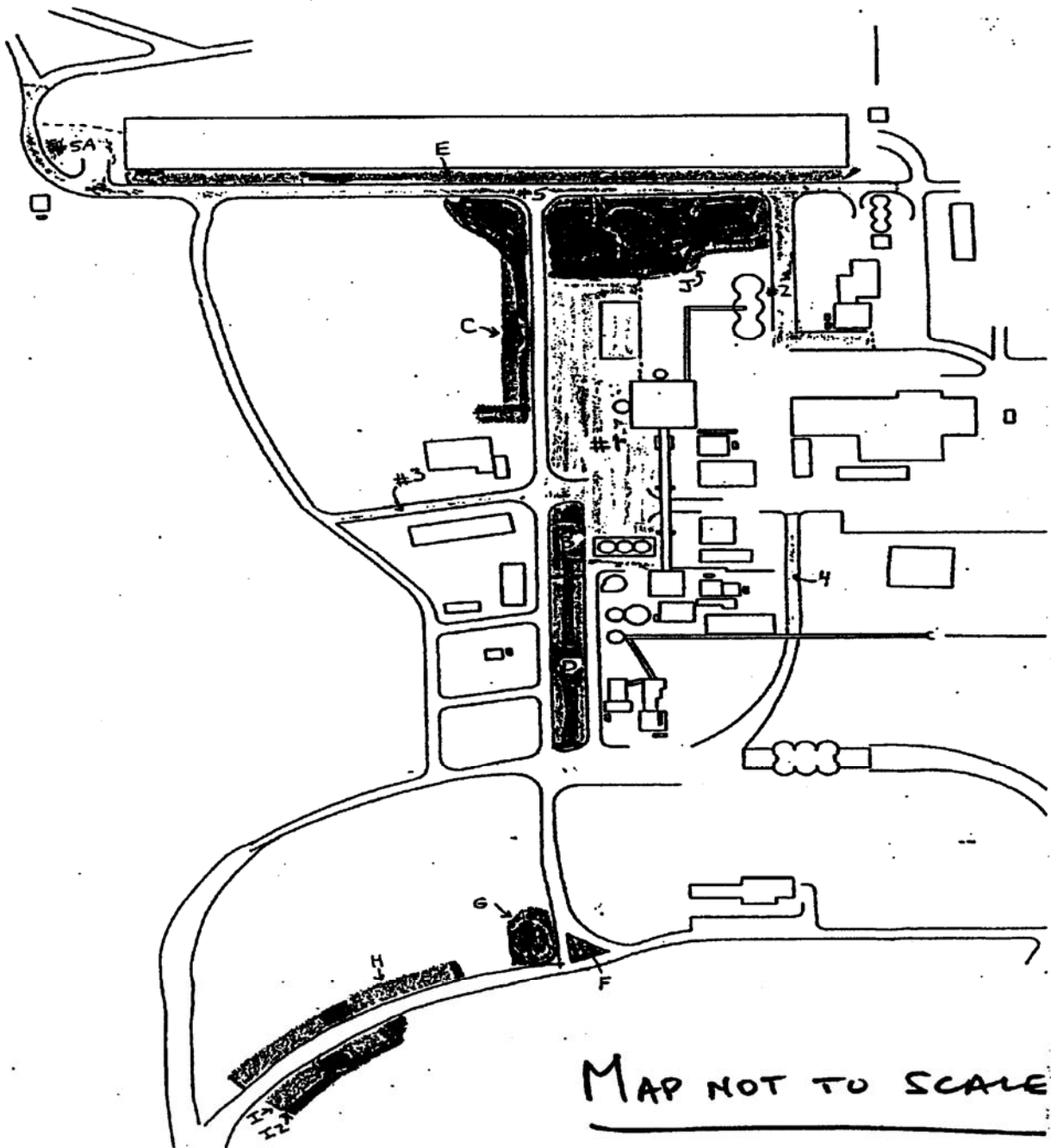
**PAVED AREAS**

<b><u>Designation</u></b>	<b><u>Description</u></b>	<b><u>Dimensions</u></b>	<b><u>Acreage</u></b>
1	Area west of kiln	542 X 187	2.078
2	Road between raw mill and bend silos	434 X 37	0.369
3	Road between SCE station and motor shed	355 X 24	0.196
4	Road east of control room	170 X 18	0.070
5	Road south of limestone storage building	1081 X 25	0.620
5A	Area west of limestone storage building	135 X 101	0.313

- cc. Permittee shall maintain 3.284 acres of vegetative ground cover and 2.57 acres of grass as described below and on attached map. (Rule 210)

**AREAS PLANTED WITH VEGETATION**

<b><u>Designation</u></b>	<b><u>Description</u></b>	<b><u>Vegetation</u></b>	<b><u>Dimensions</u></b>	<b><u>Acreage</u></b>
B	Bank west of coke dust collector	Ground cover	168 X 54	0.208
C	Bank east of laydown area	Ground cover	Irregular	0.507
D	Bank west of clinker silos/ finish mills	Ground cover	405 X 30	0.279
E	Bank south of limestone storage building	Ground cover	1,037 X 41	0.976
F	Plant entrance (triangle)	Grass	143 X 91	0.149
G	Plant entrance east area	Grass	364 X 65	0.543
H	Plant entrance northwest patch	Grass	548 X 54	0.679
I + I2	Plant entrance southwest patch	Grass	320 X 81	1.199
J	Old baghouse area	Ground cover	225 X 270	1.314



Emission Unit 006 Permit Conditions

<u>Facility Number</u>	<u>Emissions Unit</u>	<u>Description of Source</u>
1128	006	Clinker Cooling & Storage System

**Emission Unit Equipment Description/Permit Conditions**

**Federally Enforceable Conditions**

**EQUIPMENT DESCRIPTION:** Clinker Cooling & Storage System, including following equipment:

- A. Clinker cooler (52-CL-02) with 7 forced-draft cooling fans (52-FA-01 through 07) and hot air ducting to coke milling operations #1 and #2 (permit No. 1128005) ventilated to Rexnord gravel bed filter and roll-type clinker crusher;
- B. Gravel bed filter assembly (52-GF-01) with 10 filter modules, re-circulation duct, serving clinker cooler;
- C. Gravel bed filter hopper collecting screw conveyors (52-SC-01 and -02) and central duct screw conveyor (52-SC-03) with discharge to screw conveyor 52-SC-04;
- D. Screw conveyor (52-SC-04) with discharge to flop gate 52-FG-01;
- E. Flop gate (52-FG-01) with discharge to pan conveyor 62-DP-03 or screw conveyor 52-SC-05;
- F. Air to air heat exchanger (52-HX-01) with nine, 40 hp fans, 24 inch wide drag conveyor (52-CD-06) with 15 hp motor, and tipping valve (52-TV-25);
- G. Recirculation duct from gravel bed filter to clinker cooler, with clinker cooler vent fan (52-FA-08);
- H. Tertiary air duct taking hot air from clinker cooler to precalciner;
- I. Two drag conveyors (52-CD-01 and 52-CD-02);
- J. Screw conveyor (52-SC-05) with discharger to pan conveyor 61-DP-04;
- K. Pan conveyor (61-DP-04) with discharge to bucket elevator 61-BE-01;
- L. Bucket elevator (61-BE-01);
- M. Fabric collector (61-DC-06) with fan (61-FA-06) serving discharge of 61-DP-04 to 61-BE-01;
- N. Drag conveyors (61-CD-05 and 61-CD-06);
- O. Pan conveyor (62-DP-03) with discharge to flop gate 62-FG-03;
- P. Flop gate (62-FG-03) with discharge to belt conveyor 62-BC-02 or belt conveyor 62-BC-11;
- Q. Enclosed unloading hopper 62-BN-02, 30 tons capacity;
- R. Raw material feeder 62-BF-08;
- S. Fabric dust collector 62-DC-12, with fan 62-FA-12, 20,000 dscfm, serving the unloading hopper and material feeder;
- T. Flop gate 62-FG-05 to divert material to either the existing clinker building or to the new additives storage silos for finish mills FM1, FM2 and FM3 (PTOs # 1128007 and 1128036);
- U. Belt conveyor 62-BC-13 to transfer material to cement additive storage silos [71-SL-12, 71-SL-13 and 71-SL-14 (pending)], including scavenger chain drag 62-CD-07 to capture dust generated by material sticking to the belt and shaken loose at the return rollers;
- V. Fabric dust collector 62-DC-13, with fan 62-FA-13, 4500 dscfm, serving the discharge point of belt conveyor 62-BC-13;
- W. Flop gates 62-FG-06, -07 and -08 to divert the additive material to the storage silos 71-SL-12, -13 and -14 (finish mill #3, PTO #1128036); and belt conveyor 62-BC-04 to finish mill, PTO #1128007.
- X. Belt conveyor 62-BC-14, transferring material onto belt conveyor 62-BC-12;

## Emission Unit 006 Permit Conditions

- Y. Fabric dust collector 62-DC-18, with fan 62-FA-18, 1500 dscfm, serving the discharge point of belt conveyor 62-BC-14 onto existing belt conveyor 62-BC-12;
- Z. Fabric dust collectors 62-DC-14, -15 and -16, with fans 62-FA-14, -15 and -16 (pending) respectively all 1,000 dscfm. The dust collectors vent silos 71-SL-12, -13 and -14 (PTO # 11280036);
- AA. Belt conveyor (62-BC-11) with discharge to belt conveyor 62-BC-12;
- BB. Fabric collector (62-DC-08) and fan (62-FA-08) (vented outdoors) serving belt conveyor 62-BC-11 and pan conveyor 62-DP-03;
- CC. Belt conveyor 62-BC-12 with discharge to belt stacker 62-BS-02;
- DD. Fabric collector (62-DC-06) and fan (62-FA-06) (vented outdoors) serving belt conveyor 62-BC-11 and '12;
- EE. Belt stacker (62-BS-02);
- FF. Hot clinker bucket conveyor 62DP03;
- GG. Flop gate to divert hot clinker flow from bucket conveyor 62DP03;
- HH. One 80' 75 hp bypass drag conveyor 62CD06;
- II. Partially enclosed 85,000 ton capacity clinker storage building;
- JJ. 1,000 ton capacity, 3 compartment clinker and gypsum storage silos (71-SL-01, '-02, & '-03);
- KK. Dust pump (52-CX-01) with discharge to clinker storage silo 71-SL-04 or silo 71-SL-07;
- LL. Fabric collector (61-DC-03) with fan (61-FA-03) serving clinker storage silo 71-SL-04;
- MM. Gypsum and clinker reclaimer with two booms (62-RP-01 and '-02) with discharge to belt conveyor 62-BC-07;
- NN. Fabric filter dust collector providing clean air to reclaimer controls cab air conditioning unit;
- OO. Portable emergency reclaim drag conveyors (62-CD-04 and '-05) with discharge to belt conveyor 62-BC-07;
- PP. Belt conveyor (62-BC-07) with discharge to flop gate 62-FG-02;
- QQ. Fabric collector (62-DC-05) with fan (62-FA-05) serving belt conveyor 62-BC-04 and transfer of belt conveyor 62-BC-07 to belt conveyor 62-BC-08 and 62-BC-10;
- RR. Flop gate (62-FG-02) with discharge to belt conveyor 62-BC-08 or belt conveyor 62-BC-10;
- SS. Belt conveyor (62-BC-08) with discharge to belt conveyor 62-BC-04;
- TT. Fabric collector (62-DC-04) with fan (62-FA-04) serving belt conveyors 62-BC-04 and 62-BC-08;
- UU. Belt conveyor (62-BC-10) with discharge to bucket elevator 62-BE-02;
- VV. Bucket elevator 62-BE-02 with discharge to drag conveyor 62-CD-06;
- WW. Drag conveyor (62-CD-06);
- XX. Belt conveyor (62-BC-04) with discharge to storage silos 71-SL-01 through '-03;
- YY. Fabric dust collector (62-DC-18) with fan (62-FA-18), 1500 dscfm serving the discharge point of diverter gate 62-FG-07 on to existing belt conveyor 62-BC-04;
- ZZ. Three 3,000 ton capacity, three compartment clinker and gypsum storage silos (71-SL-05 through 07) ventilated by two fabric collectors (61-DC-04 and 61-DC-05); and
- AAA. One 6,000 ton capacity clinker storage silo (71-SL-04) ventilated by fabric collector (52-DC-02).

### **OPERATIONAL CONDITIONS:**

1. Only dust collectors 62 DC-04 and 62 DC-05 shall vent outside clinker storage building. (Rule 210.1)
2. Clinker storage pile shall be partially enclosed with a wind barrier along one side. (Rule 210.1 BACT)
3. Wind barriers shall be located to protect storage pile from prevailing wind. (Rule 210.1 BACT)
4. Height of wind barrier shall be maintained at level sufficient to maintain a wind speed within storage building to 1 mile per hour or less. (Rule 210.1 BACT)

## Emission Unit 006 Permit Conditions

5. Area of storage pile shall not exceed 5.0 acres. (Rule 210.1 BACT)
6. Each fabric collector exhaust stack shall be equipped with provisions for collection of pollutant samples in manner consistent with U. S. EPA test methods. (Rule 210.1)
7. Particulate matter emissions from any single source operation shall be no more than 0.1 gr/scf. (Rule 404.1)
8. Fabric collectors shall be in operation when clinker cooler and conveyors are in operation. (Rule 210.1)
9. Fabric collectors shall have operational differential pressure indicators. (Rule 209)
10. Visible emissions from all emission points shall be less than 5% opacity except bulk storage, which shall be less than 10% opacity. (Rule 210.1 BACT)
11. All material conveyors shall be covered/enclosed and shall have no visible emissions. (Rules 209 and 210.1 BACT)
12. All piping, ducting, connections, and elevators shall be leak-tight and shall have no visible emissions. (Rule 209)
13. Clinker cooler shall exhaust to gravel bed filter and to precalciner (via tertiary air duct) with no exhaust point directly to atmosphere. (Rules 209 and 210.1)
14. All gravel bed filter exhaust gas shall be re-circulated; none shall be exhausted to atmosphere. (Rules 209 and 210.1)
15. Dust collectors shall have operational pressure differential indicators on each compartment. (Rule 209)
16. Visible emissions from equipment installed pursuant to Authority to Construct 1128006F shall be less than 5% opacity. (Rule 210.1 BACT)
17. Visible emissions from gypsum unloading and transfer operation shall be less than 5% opacity during normal operation. (Rule 210.1 BACT)
18. Conveyors shall be covered when in operation. (Rule 209)
19. Fines collected in dust collectors shall be returned to process. (Rule 210.1)
20. Fabric collector serving gypsum unloading, transfer, and storage operation shall begin operation prior to each unloading cycle and shall operate during entire cycle. (Rule 210.1)
21. Silt content (passing 200-mesh sieve) of clinker shall not exceed 6.4%. (Rule 210.1 BACT)
22. Equipment shall be maintained according to manufacturer's specifications to ensure compliance with emissions limitations. (Rules 209 and 210.1)
23. Compliance with all operational conditions shall be verified by appropriate record keeping, including records of operational data needed to demonstrate compliance. Such records shall be kept on site in readily available format. (Rule 209)
24. No emission resulting from use of this equipment shall cause injury, detriment, nuisance, annoyance to or endanger comfort, repose, health, or safety of any considerable number of persons or public. (Rule 419 and CH&SC, Sec 41700)

### **STATE OF CALIFORNIA AIR TOXICS HOT SPOTS REQUIREMENTS:**

Facility shall comply with California Health and Safety Code, Sections 44300 through 44384. (Rule 208.1)

### **COMPLIANCE TESTING REQUIREMENTS:**

Should inspection reveal conditions indicative of non-compliance, compliance with hourly and concentration emission limits shall be verified pursuant to Rule 108.1 and EKAPCD Guidelines for Compliance Testing, within 30 days of District request. (Rule 108.1)

Emission Unit 006 Permit Conditions

**EMISSION LIMITS:**

Maximum emission rate of each air contaminant from this emission unit shall not exceed following limits:

**Particulate Matter (PM<sub>10</sub>):**

Fabric Collector (61-DC-03) (@ 9,972 acfm)	0.053	gr/scf
	4.53	lb/hr
	108.72	lb/day
	19.84	ton/yr
Each Fabric Collector (61-DC-06 or 62-DC-08) (@4,000 acfm)	0.011	gr/scf
	0.38	lb/hr
	9.05	lb/day
	1.65	ton/yr
Fabric Collector (62-DC-04) (@5,000 acfm)	0.01	gr/scf
	0.43	lb/hr
	10.30	lb/day
	1.88	ton/yr
Fabric Collector (62-DC-05) (@7,500 acfm)	0.01	gr/scf
	0.64	lb/hr
	15.43	lb/day
	2.82	ton/yr
Fabric Collector (62-DC-07) (@7,000 acfm)	0.01	gr/scf
	0.66	lb/hr
	15.84	lb/day
	2.89	ton/yr
Fabric Collector (62-DC-06) (@ 3,500 acfm)	0.011	gr/scf
	0.33	lb/hr
	7.92	lb/day
	1.45	ton/yr
Fabric Collector (62-DC-11) (@ 3,000 dscfm)	0.01	gr/scf
	0.26	lb/hr
	6.17	lb/day
	1.13	ton/yr
Fabric Collector (62-DC-12) (@ 20,000 dscfm)	0.003	gr/scf
	0.26	lb/hr
	6.17	lb/day
	1.13	ton/yr

Emission Unit 006 Permit Conditions

**Particulate Matter (PM<sub>10</sub>):**

Fabric Collector (62-DC-13) (@ 4,500 dscfm)	0.003	gr/scf
	0.03	lb/hr
	0.67	lb/day
	0.12	ton/yr
Fabric Collector (62-DC-14) (@ 1,000 dscfm)	0.003	gr/scf
	0.03	lb/hr
	0.67	lb/day
	0.12	ton/yr
Fabric Collector (62-DC-15) (@ 1,000 dscfm)	0.003	gr/scf
	0.03	lb/hr
	0.67	lb/day
	0.12	ton/yr
Fabric Collector (62-DC-16) (@ 1,000 dscfm)	0.003	gr/scf
	0.03	lb/hr
	0.67	lb/day
	0.12	ton/yr
Fabric Collector (62-DC-17) (@ 1,500 dscfm)	0.003	gr/scf
	0.002	lb/hr
	0.05	lb/day
	0.01	ton/yr

(Emission limits established pursuant to Rule 210.1, unless otherwise noted.)

Compliance with maximum daily emission limits shall be verified by source operator (with appropriate operational data and record keeping to document maximum daily emission rate) each day source is operated and such documentation of compliance shall be retained and made readily available to District for period of three years. (Rules 209 and 210.1)

**SPECIAL CONDITIONS:**

- aa. All equipment shall be designed, installed and operated as described in application for Permit to Operate unless advance approval is granted for alternative.
- bb. Average stockpile size and fugitive dust emissions from clinker storage shall not exceed following:

Source	Stockpile Size (acres)	Maximum Throughput (Ton/Yr)	PM10 Emissions (Ton/Yr)
Clinker	5.0	1,000,000	4.58

Written records to demonstrate compliance with these limits shall be maintained and made immediately available for District examination. (Rules 209 and 210.1, and EKAPCD Fugitive Dust Policy #95-02)

## Emission Unit 006 Permit Conditions

- cc. Written records of average pile size shall be maintained on monthly basis for outside storage piles. (Rule 210.1)
- dd. This source is exempt from PSD review because of PM<sub>10</sub> emission reductions made from existing operations concurrently with new equipment installation. Any relaxation in this limit which increases your potential to emit above the applicable PSD threshold will require a full PSD review of the affected source as if construction had not yet commenced.
- ee. The owner or operator shall perform CARB Method 5 on fabric collector 62-DC-12, 62-DC-13 and 62-DC-17 to determine compliance with the BACT grain loading of 0.003 gr/scf no later than 60 days after startup. District must be notified 30 days prior to any compliance source testing and the owner shall submit a source test plan for District approval 15 days prior to source sampling. Results shall be submitted to the District no later than 60 days within the test date. (Rules 108.1 and 210.1)

DRAFT

Emission Unit 007 Permit Conditions

<u>Facility Number</u>	<u>Emissions Unit</u>	<u>Description of Source</u>
1128	007	Finish Mill #1 & Storage

**Emission Unit Equipment Description/Permit Conditions**

**Federally Enforceable Conditions**

**EQUIPMENT DESCRIPTION:** Finish Mill #1 & Storage, including following equipment:

**EQUIPMENT DESCRIPTION:** Modification to Existing Finish Mill System by Installing Cement Additive Handling and Storage Operation, including following equipment and design specification:

- A. N02500 separator (71-SP-01); 200 kilowatt AC Siemens variable speed drive;
- B. Outlet airflow - 88,000 acfm; Lubrication system (71-LU-12) with lubrication pump; Mechanical tipping valve for rejects (71-TV-08); Bleed air inlet damper (71-DA-03), 4 feed air gravity conveyors (71-AC-13 through 71-AC-16);
- C. Dust collector (71-DC-07) with a maximum rated airflow 120,000 acfm at 185<sup>0</sup> F; pulsejet type; 4:1 air to cloth ratio with polyester felt bags; 2 mechanical tipping valves; maximum pressure drop of 10 inches water column; Includes 2 air gravity conveyors (71-AC-17 and 71-AC-18) under dust collector hoppers;
- D. Fan (71-FA-07); Rated 120,000 acfm at 185<sup>0</sup> F 35 inches water column; Motor 900 Hp including inlet damper (71-DA-02);
- E. Air gravity conveyor (71-AC-02) from new dust collector to existing air conveyor (71-AC-08);
- F. Ductwork from O-Sepa to dust collector; 68 inches diameter;
- G. Ductwork from dust collector to O-Sepa fan; 119" by 38";
- H. Ductwork from O-Sepa fan exhausting to atmosphere; 90" by 36";
- I. Auxiliary venting ducting designed for 3,500 fpm velocities venting to 71-DC-01;
- J. Air compressor (71-CP-03);
- K. Air dryer (71-AD-02);
- L. Cement mill duty bucket elevator (71-BE-03) with 20 hp motor ventilated by 8" diameter duct @ 1,500 cfm, to cooler (71-CC-03);
- M. Fuller cement cooler (71-CC-03), 6 ft.6" diameter by 16 ft. high ventilated by 8" diameter duct @ 1,400 cfm;
- N. Industrial Filter, Model AA11511-10, dust collector (71-DC-06) 160 - 5 inch by 10 inch.
- O. Bags with 60 hp fan motor serving 71-BE-03 and 71-CC-03 and following equipment: Screw conveyor (71-SC-09) ventilated by 18" diameter duct @ 2,000 cfm and mill B-2 (71-BM-02);
- P. Dust collector (71-DC-04) 307 - 5" by 10 ft. bags with 60 hp fan motor serving 71-BM-01 and 71-SP-02 and following equipment:
- Q. Air slide (71-AC-01), ventilated by 8" diameter duct @ 1,300 cfm and elevator (71-BE-01) ventilated by 10" diameter duct @ 200 cfm;
- R. Three cement coolers (71-CC-01, 71-CC-02, and 71-CC-04) each ventilated by one 8" diameter duct @ 1,300 cfm each; and
- S. Feed screw (71-SC-09) ventilated by 12" diameter duct @ 2,500 cfm and elevator (71-BE-02) ventilated by 10" diameter duct @ 2,500 cfm;
- T. Tunnel conveyor (62-BC-04), shared with PTO 1128006;

## Emission Unit 007 Permit Conditions

- U. Three finish mill feed silos (71-SL-01 through 71-SL-03) ventilated to 62-DC-09;
- V. Add piping and booster blower to transfer material pneumatically from delivery trucks to silos 71-SL-07. Existing dust collector 61-DC-05 presently serves these silos and its capacity is adequate to vent the silos during pneumatic transfer (new)
- W. Fabric collector (71-DC-03) serving ball mill feed conveyor and weigh feeders;
- X. Seven weigh feeders (71-WF-01 through 71-WF-07);
- Y. Ball mill feed conveyor (71-BC-01) ventilated to 71-DC-02;
- Z. Dust collecting metal hopper with scavenger screw (pending);
- AA. Fabric collector (71-DC-02) serving ball mill feed conveyor (71-BC-01) and weigh feeders;
- BB. Feed belt (71-BC-01) ventilated by 12" diameter duct @ 2,500 cfm;
- CC. Fuller B-1 ball mill (71-BM-01) ventilated to 71-DC-04;
- DD. Air separator (71-SP-02) ventilated to 71-DC-04;
- EE. Fabric collector (71-DC-01) serving O-Sepa Separator;
- FF. Two air conveyors (71-AC-05 and 71-AC-11);
- GG. Air conveyor (71-AC-06);
- HH. Two air conveyors (71-AC-19 and 71-AC-20);
- II. Two cement pumps (71-FK-01 and 71-CX-01) each ventilated by one 6" diameter duct @ 1,000 cfm each and vented to O-Sepa Separator (71-SP-01);
- JJ. Pulse Jet fabric collector 71-DC-16 with 25 bags (265 square feet), 1250 acfm serving transfer point between weighfeeder 1 (71-WF-01) and belt conveyor (71-BC-01);
- KK. Pulse Jet fabric collector 71-DC-17 with 25 bags (265 square feet), 1250 acfm serving transfer point between weighfeeder 2 (71-WF-02) and belt conveyor (71-BC-01); and
- LL. Pulse Jet fabric collector 71-DC-18 with 25 bags (265 square feet), 1250 acfm serving transfer point between weighfeeder 4 (71-WF-04) and belt conveyor (71-BC-01).

### **OPERATIONAL CONDITIONS:**

1. Exhaust stack shall be equipped with adequate provisions facilitating collection of samples consistent with EPA test methods, i.e. capped sample port in accessible location of uniform flow. (Rule 108.1)
2. Dust collector shall be equipped with operational pressure differential indicator. (Rule 209)
3. Particulate matter emissions from any single source operation shall be no more than 0.1 gr/scf. (Rule 404.1)
4. Fabric dust collectors shall be in operation when associated equipment is operated. (Rule 210.1)
5. Visible emissions from all emission points, unless specified, shall not exhibit or exceed 10% opacity. (Rule 422, 40 CFR Part F)
6. All piping, ducting, and connections shall be leak-tight and shall have no visible emissions. (Rule 210.1)
7. There shall be no visible emissions from fabric collectors 71-DC-16, '-17, and '-18. (Rule 210.1 BACT Requirement)
8. Conveyors shall be covered when in operation. (Rule 210.1)
9. Material collected in dust collectors shall be disposed of in manner preventing entrainment in atmosphere. (Rule 210.1)
10. Equipment shall be maintained according to manufacturer's specifications. (Rules 210.1 and 209)
11. Compliance with all operational conditions shall be verified by appropriate record keeping, including records of operational data needed to demonstrate compliance. Such records shall be kept on site in readily available format. (Rule 210.1)

Emission Unit 007 Permit Conditions

12. Emission from use of this equipment shall not cause injury, detriment, nuisance, annoyance to or endanger comfort, repose, health, or safety of any considerable number of persons or public. (Rule 419 and CH&SC, Sec 41700)

**STATE OF CALIFORNIA AIR TOXICS HOT SPOTS REQUIREMENTS:**

Facility shall comply with California Health and Safety Code, Sections 44300 through 44384. (Rule 208.1)

**COMPLIANCE TESTING REQUIREMENTS:**

Should inspection reveal conditions indicative of non-compliance, compliance with fabric collector emission limitations shall be verified, within 60 days of District request. (Rule 108.1)

**EMISSION LIMITS:**

Maximum emission rate of each air contaminant from this emission unit shall not exceed following limits:

**Particulate Matter (PM<sub>10</sub>):**

Fabric Collector (71-DC-01) (@ 23,000 acfm)	0.013	gr/scf
	2.54	lb/hr
	60.34	lb/day
	11.01	ton/yr
Fabric Collector (71-DC-02) (@ 4,800 acfm)	0.013	gr/scf
	0.52	lb/hr
	12.59	lb/day
	2.30	ton/yr
Fabric Collector (71-DC-03) (@ 3,500 acfm)	0.013	gr/scf
	0.38	lb/hr
	9.18	lb/day
	1.68	ton/yr
Fabric Collector (71-DC-04) (@ 17,000 acfm)	0.013	gr/scf
	1.86	lb/hr
	44.60	lb/day
	8.14	ton/yr
Fabric Collector (71-DC-06) (@ 12,000 acfm)	0.013	gr/scf
	1.31	lb/hr
	31.48	lb/day
	5.75	ton/yr

Emission Unit 007 Permit Conditions

**Particulate Matter (PM<sub>10</sub>):**

Fabric Collector (71-DC-07) (@ 120,000 acfm)	0.011	gr/scf
	11.70	lb/hr
	280.88	lb/day
	51.26	ton/yr
Fabric Collector (71-DC-16) (@ 1,250 acfm)	0.01	gr/scf
	0.47	lb/hr
	11.31	lb/day
	2.06	ton/yr
Fabric Collector (71-DC-17) (@ 1,250 acfm)	0.01	gr/scf
	0.47	lb/hr
	11.31	lb/day
	2.06	ton/yr
Fabric Collector (71-DC-18) (@ 1,250 acfm)	0.01	gr/scf
	0.47	lb/hr
	11.31	lb/day
	2.06	ton/yr

(Emission limits established pursuant to Rule 210.1, unless otherwise noted.)

Compliance with maximum daily emission limits shall be verified by source operator (with appropriate operational data and record keeping to document maximum daily emission rate) each day source is operated and such documentation of compliance shall be retained and made readily available to District for period of three years. (Rules 209 and 210.1)

**SPECIAL CONDITION:**

National Cement shall provide District with a written notification of any ARB PERP equipment operation according to notification requirements listed on the permit. National Cement shall maintain records of all ARB PERP permits for five years and no ARB PERP equipment shall be operated in a manner consistent with a stationary application, i.e. routine and predictable, without prior District approval.

Emission Unit 008 Permit Conditions

<u>Facility Number</u>	<u>Emissions Unit</u>	<u>Description of Source</u>
1128	008	Finish Mill #2

**Emission Unit Equipment Description/Permit Conditions**

**Federally Enforceable Conditions**

**EQUIPMENT DESCRIPTION:** Finish Mill #2, including following equipment:

- A. Two screw conveyors (71-SC-12 and 71-SC-11);
- B. B-2 ball mill (71-BM-02) ventilated to item C;
- C. Fabric collector (71-DC-06) serving items B and F;
- D. Screw conveyor (71-SC-09);
- E. Two elevators (71-BE-03 and 71-BE-02) (shared with PTO 1128007);
- F. Cement cooler (71-CC-03) ventilated to fabric collector (71-DC-06); and
- G. Three air conveyors and air separator (shared with PTO 1128007) items L, M, and N.

**OPERATIONAL CONDITIONS:**

- 1. Particulate matter emissions from any single source operation shall be no more than 0.2-gr/scf. (Rule 404.1)
- 2. Visible emissions from any single emission point shall be less than 20% opacity or Ringelmann No. 1 except for not more than three minutes in any one hour. (Rule 401)
- 3. Material collected in dust collectors shall be disposed of in manner preventing entrainment in atmosphere. (Rule 209)
- 4. Collectors shall have operational differential pressure indicators. (Rule 209)

Emission Unit 009 Permit Conditions

<u>Facility Number</u>	<u>Emissions Unit</u>	<u>Description of Source</u>
1128	009	Gypsum Truck Off-Loading Operation

**Emission Unit Equipment Description/Permit Conditions**

**Federally Enforceable Conditions**

**EQUIPMENT DESCRIPTION:** Gypsum Truck Off-Loading Operation, including following equipment:

- A. Gypsum receiving hopper (62-BN-01);
- B. Gypsum stacker with water sprays (62-BC-05);
- C. Covered gypsum storage area;
- D. Belt feeder (62-BF-01) to tunnel conveyor;
- E. Hydraulic boot system (62-BL-01);
- F. Fabric dust collector (62-DC-03) with 2,000 acfm fan; and
- G. Rotary feeder (62-RF-01).

**OPERATIONAL CONDITIONS:**

- 1. Dust collector shall be equipped with operational pressure differential indicator. (Rule 209)
- 2. Material collected in dust collector shall be disposed of in manner preventing entrainment in atmosphere. (Rules 209 and 210.1)
- 3. Equipment shall be maintained according to manufacturer's specifications to ensure compliance with emissions limitations. (Rules 210.1 and 209)
- 4. Fabric dust collector shall be in operation when equipment is operated. (Rule 210.1)
- 5. Particulate matter emissions discharged into atmosphere shall be no more than 0.1 grains/ft<sup>3</sup> of gas at standard conditions. (Rule 404.1)
- 6. Visible emissions from equipment shall be less than 5% opacity or Ringelmann No. 1/4 except for not more than three minutes in any one hour. (Rule 210.1 BACT)
- 7. No emission resulting from use of this equipment shall cause injury, detriment, nuisance, annoyance to or endanger comfort, repose, health, or safety of any considerable number of persons or public. (Rule 419 and CH&SC, Sec 41700)

**EMISSION LIMITS:**

Maximum emission rate of each air contaminant from fabric dust collector unit shall not exceed following limits:

**Particulate Matter (PM<sub>10</sub>):**

- 0.10 gr/dscf (Rule 404.1)
- 1.71 lb/hr
- 13.71 lb/day

(Emission limits established pursuant to Rule 210.1, unless otherwise noted.)

## Emission Unit 009 Permit Conditions

Compliance with maximum daily emission limits shall be verified by source operator (with appropriate operational data and record keeping to document maximum daily emission rate) each day source is operated and such documentation of compliance shall be retained and made readily available to District for period of three years. (Rules 209 and 210.1)

DRAFT

Emission Unit 010 Permit Conditions

<u>Facility Number</u>	<u>Emissions Unit</u>	<u>Description of Source</u>
1128	010	Cement Storage & Shipping

**Emission Unit Equipment Description/Permit Conditions**

**Federally Enforceable Conditions**

**EQUIPMENT DESCRIPTION:** Cement Storage & Shipping, including following equipment:

- A. Bucket elevator (81-BE-01) with discharge to air conveyor 81-AC-45 ventilated by fabric collector 71-DC-08;
- B. Air conveyor (81-AC-45) with discharge to air conveyor 81-AC-23;
- C. Air conveyor (81-AC-23) with discharge to bucket elevator 81-BE-02;
- D. Alleviator (81-AL-01) with discharge to bucket elevator 81-BE-02;
- E. Bucket elevator (81-BE-02) with discharge to air conveyor 81-AC-24;
- F. Twelve air conveyors (81-AC-01 through 81-AC-08, 81-AC-12, 81-AC-14, 81-AC-15, and 81-AC-18);
- G. Ten air conveyors (81-AC-24 through 81-AC-31, 81-AC-40, and 81-AC-41) with diverter gates (81-DG-01 through 09) with discharges to storage silos;
- H. Eight concrete storage silos (81-SL-01 through 81-SL-08) ventilated to fabric collectors 81-DC-06 and 81-DC-07;
- I. Manually operated slide gate (81-SG-10);
- J. Rotary feeder (81-RF-01);
- K. One 7-ton holding bin (81-BN-02);
- L. One 250 hp, 4500 acfm, air blower for conveying material;
- M. Inductor (81-IN-01) to mix air from blower 81-BL-21 and cement from rotary feeder 81-RF-02;
- N. One 3hp, 779 square feet, 450 dscfm dust collector (81-DC-18) with fan (81-FA-18) serving holding bin 81-BN-02;
- O. One 7-ton alleviator used to pneumatically convey cement and equipped with discharge rotary feeder;
- P. One 3hp, 779 square feet, 450 dscfm dust collector (81-DC-19) with fan (81-FA-19) serving holding alleviator 81-AL-01;
- Q. Two concrete storage silos (81-SL-09 through 81-SL-10) with aerated bin bottoms (81-AC-38 d 39), lump breakers (81-LB-09, >-10, >-11, and >-12) and rotary feeders (81-RV-16, >19, >-22, and >-25) ventilated to fabric collector 81-DC-09;
- R. Four unloaders (81-MS-01 through 81-MS-04) ventilated to fabric collectors 81-DC-01 through 81-DC-04;
- S. Four fabric collectors (81-DC-01 through 81-DC-04) serving four Midwest unloaders;
- T. I.C.A. fabric collector (81-DC-06) serving silos (81-SL-03, 81-SL-08, 81-SL-04, and 81-SL-06);
- U. Fabric collector (81-DC-07) serving silos (81-SL-01, 81-SL-02, 81-SL-05, and 81-SL-07);
- V. Fabric collector (81-DC-09) with fan (81-FA-09) and screw conveyor (81-SC-01 with discharge to silo 81-SL-10 serving silos (81-SL-09 and 81-SL-10, alleviator 81-AL-01, air conveyors 81-AC-23 and 81-AC-37, and bucket elevator 81-BE-02;
- W. Air conveyors (81-AC-32, >-33, >-34, and >-35) from silos 81-SL-09 and >-10 with spitzer traps (81-ST-09, >-10, >-11 and >-12) and discharge to loading spouts;

## Emission Unit 010 Permit Conditions

- X. Four truck loading spouts (81-MS-05 through >-08);
- Y. Four fabric collectors (81-DC-10 through >-13) with fans (81-FA-10 through 13) serving loading spouts 81-MS-05 through >08;
- Z. Air conveyors (81-AC-36 and >-37) from the discharge of silos 81-SL-09 and >-10 to mixing box 81-MB-01;
- AA. Mixing box (81MB-01);
- BB. Fabric Collector (81-DC-17) with pulse jet cleaning mechanism; and
- CC. Fan (81-FA-17) for Fabric Collector (81-DC-17).

### **OPERATIONAL CONDITIONS:**

1. Each fabric collector exhaust stack shall be equipped with provisions for collection of pollutant samples in manner consistent with U.S. EPA test methods. (Rule 210.1)
2. Particulate matter emissions from any single source operation shall be no more than 0.1 gr/scf. (Rule 404.1)
3. Fabric collectors shall be in operation when silos and conveyors are in operation. (Rule 210.1)
4. Visible emissions from all emission points shall be less than 5% opacity. (Rule 210.1 BACT Requirement)
5. All material conveyors shall be covered/enclosed and shall have no visible emissions. (Rule 210.1 BACT Requirement)
6. All piping, ducting, connections, and elevators shall be leak-tight and shall have no visible emissions. (Rule 210.1)
7. Dust collectors shall have operational pressure differential indicators on each compartment. (Rule 210.1)
8. Conveyors shall be covered when in operation. (Rule 210.1)
9. Fines collected in dust collectors shall be returned to process. (Rule 210.1)
10. Fabric collectors serving cement storage & shipping operation shall operate whenever associated transfer and loading equipment is in operation. (Rule 210.1)
11. Equipment shall be maintained according to manufacturer=s specifications to ensure compliance with emissions limitations. (Rules 210.1)
12. Compliance with all operational conditions shall be verified by appropriate record keeping, including records of operational data needed to demonstrate compliance. Such records shall be kept on site in readily available format. (Rule 210.1)
13. No emission resulting from use of this equipment shall cause injury, detriment, nuisance, annoyance to or endanger comfort, repose, health, or safety of any considerable number of persons or public. (Rule 419 and CH&SC, Sec 41700)

### **STATE OF CALIFORNIA AIR TOXICS HOT SPOTS REQUIREMENTS:**

Facility shall comply with California Health and Safety Code, Sections 44300 through 44384. (Rule 208.1)

### **COMPLIANCE TESTING REQUIREMENTS:**

Should inspection reveal conditions indicative of non-compliance, compliance with hourly and concentration emission limits shall be verified pursuant to Rule 108.1 and EKAPCD Guidelines for Compliance Testing, within 30 days of District request. (Rule 108.1)

Emission Unit 010 Permit Conditions

**EMISSION LIMITS:**

Maximum emission rate of each air contaminant from this emission unit shall not exceed following limits:

**Particulate Matter (PM<sub>10</sub>):**

Each Fabric Collector (81-DC-10, 81-DC-11, 81-DC-12 and 81-DC-13)	0.011 0.29 7.01 1.28	gr/scf lb/hr lb/day ton/yr
Fabric Collector (81-DC-06)	0.011 0.47 11.31 2.06	gr/scf lb/hr lb/day ton/yr
Fabric Collector (81-DC-07)	0.011 1.89 45.26 8.26	gr/scf lb/hr lb/day ton/yr
Fabric Collector (81-DC-09)	0.011 1.13 27.15 4.96	gr/scf lb/hr lb/day ton/yr
Fabric Collector (81-DC-18)	0.02 0.08 2.08	gr/scf lb/hr lb/day
Fabric Collector (81-DC-19)	0.02 0.08 2.08	gr/scf lb/hr lb/day
Fabric Collector (81-DC-18 and 19) (Combined emissions)	0.52	ton/yr

Compliance with maximum daily emission limits shall be verified by source operator (with appropriate operational data and record keeping to document maximum daily emission rate) each day source is operated and such documentation of compliance shall be retained and made readily available to District for period of three years. (Rules 209 and 210.1)

Emission Unit 017 Permit Conditions

<u>Facility Number</u>	<u>Emissions Unit</u>	<u>Description of Source</u>
1128	017	<u>Quarry Operation</u>

**Emission Unit Equipment Description/Permit Conditions**

**Federally Enforceable Conditions**

**EQUIPMENT DESCRIPTION:** Quarry Operation, including following equipment:

- A. Multiple separate mining sites;
- B. Blast hole drill with dust collector and water spray (E90304);
- C. 16 yard front end loader for loading shot rock into 85 ton haul trucks (E9046);
- D. 85 and 100 ton capacity haul trucks (E90203 and E90204); and
- E. 16,000 gallon capacity water truck for haul road dust suppression (E90708).

**OPERATIONAL CONDITIONS:**

- 1. Visible emissions shall be less than 20% opacity or Ringelmann No.1 except for not more than three minutes in any one hour. (Rule 401)
- 2. Water trucks shall be utilized to minimize dust from blasting, loading, and haul areas. (Rule 209)
- 3. Equipment shall be maintained as per manufacturer's recommendations. (Rule 209)
- 4. Material collected in fabric collector shall be disposed in manner preventing entrainment in atmosphere. (Rule 209)

Emission Unit 018 Permit Conditions

<u>Facility Number</u>	<u>Emissions Unit</u>	<u>Description of Source</u>
1128	018	<u>Gasoline Storage &amp; Dispensing System</u>

**Emission Unit Equipment Description/Permit Conditions**

**Federally Enforceable Conditions**

**EQUIPMENT DESCRIPTION:** Gasoline Storage & Dispensing System, including following equipment:

- A. One existing 3,000 gallon unleaded grade aboveground gasoline storage tank serving one nozzle at one island;
- B. Phase I (filling of storage tank) vapor collection system, including separate vapor riser with:
  - 1. Liquid fill adaptor;
  - 2. Liquid fill cap;
  - 3. Vapor adaptor;
  - 4. Drop tube;
  - 5. Pressure/vacuum relief valve; and
  - 6. Overfill protection.
- C. Permanently affixed fill tube terminating no more than six inches from bottom of tank;
- D. Balance type Phase II (refueling of motor vehicles) gasoline vapor control system, including:
  - 1. Product dispensing/vapor collection nozzles;
  - 2. Vapor hoses (nozzles to risers) coaxial hose assembly;
  - 3. Nozzle/vapor hose swivels:
    - a. Nozzle swivels: None required;
    - b. Island swivels: None required;
    - c. Dispenser swivels: None required; and
    - d. Retractor swivel: None required.
  - 4. Flow limiters: None;
  - 5. Recirculation traps/anti-recirculation valves: Not required;
  - 6. Vapor check valve;
  - 7. Overhead hose retractors;
  - 8. Dispenser suction pump; and
  - 9. General exterior of tank shall be painted white (Executive Order G-70-130).

**OPERATIONAL CONDITIONS:**

- 1. System shall be of California Air Resources Board Acertified@ design. (Rule 412)
- 2. Storage/dispensing facility shall be equipped with California Air Resources Board certified Phase I (filling of storage tanks) and Phase II (refueling of motor vehicles) vapor collection systems. (Rule 209, 412, and 412.1)
- 3. Vapor control system shall be of California Air Resources Board (CARB) certified design. Manufacturer's recommendations for installation, operation, and maintenance shall be followed to prevent at least 95% by weight of all gasoline vapors from entering atmosphere. (Rules 209, 412, and 412.1)

## Emission Unit 018 Permit Conditions

4. All Phase I (filling of storage tank) vapor collection equipment shall be used when tank is filled. (Rules 209 and 412)
5. Gasoline flow through any nozzle shall not exceed ten gallons per minute. (Rule 412.1)
6. Retail stations shall post following: Illustrated instructions for dispensing fuel to vehicle; warning that topping off is prohibited; and toll-free number for registering complaints regarding operation of vapor recovery system. (Rule 209)
7. All lines, fittings, adapters, caps, and connections shall be maintained leak-free. (Rule 412.1)
8. Tank shall be equipped with permanently submerged fill pipe terminating no more than six inches from bottom of tank. (Rule 412)
9. Any tank with vapor recovery system having defect shall not be operated until defect has been repaired, replaced, or adjusted as necessary to correct defect, and District has tagged out of service upon detection. (Rules 412 and 412.1)
10. General exterior of tank shall be white in color. (Rule 412.1)
11. Tank shall be equipped with pressure-vacuum valve set to within 10% of maximum allowable working pressure of tank. (Rule 412)

### **STATE OF CALIFORNIA AIR TOXICS HOT SPOTS REQUIREMENTS:**

Facility shall comply with California Health and Safety Code, Sections 44300 through 44384. (Rule 208.1)

### **COMPLIANCE TESTING REQUIREMENTS:**

Should inspection reveal conditions indicative of non-compliance, compliance with hourly and concentration emission limits shall be verified pursuant to Rule 108.1 and EKAPCD Guidelines for Compliance Testing, within 30 days of District request. (Rule 108.1)

### **EMISSION LIMITS:**

Maximum emission rate of each air contaminant from this emission unit shall not exceed following limits:

#### **Volatile Organic Compounds (VOC):**

0.01	lb/hr
0.23	lb/day
0.04	ton/yr

(Emission limits established pursuant to Rule 210.1, unless otherwise noted.)

Compliance with maximum daily emission limits shall be verified by source operator (with appropriate operational data and record keeping to document maximum daily emission rate) each day source is operated and such documentation of compliance shall be retained and made readily available to District for period of three years. (Rules 209 and 210.1)

Emission Unit 018 Permit Conditions

**SPECIAL CONDITIONS:**

- aa. Gasoline throughput shall not exceed 36,000 gallons per year without prior District approval. (Rule 210.1)
- bb. Equipment shall be installed and operated as described in California Air Resources Board Executive Order G-70-102-A and G-70-130-A. (Rule 209)
- cc. System and components shall be of California Air Resources Board Acertified@ design, any component changes shall be approved in advance by EKAPCD. (Rule 412)

DRAFT

Emission Unit 019 Permit Conditions

<u>Facility Number</u>	<u>Emissions Unit</u>	<u>Description of Source</u>
1128	019	<u>Piston Engine with Air Compressor #E90004</u>

**Emission Unit Equipment Description/Permit Conditions**

**Federally Enforceable Conditions**

**EQUIPMENT DESCRIPTION:** Piston Engine with Air Compressor #E90004, including following equipment:

One 195 bhp diesel piston engine powering portable air compressor.

**OPERATIONAL CONDITIONS:**

1. Engine shall have operational elapsed time meter (or approved equivalent method) indicating cumulative hours of engine operating time. (Rules 209 and 210.1)
2. Visible emissions from engine exhaust shall be less than 20% opacity or Ringelmann No. 1 except for not more than three minutes in any one hour. (Rule 401)
3. Exhaust gas particulate matter concentration shall be no more than 0.1 gr/scf. (Rule 404.1)
4. Engine operation shall be no more than 1,000 hours per year. (Rule 210.1)
5. Compliance with all operational conditions shall be verified by appropriate recordkeeping, including records of operational data needed to demonstrate compliance. Such records shall be kept on site in readily available format. (Rule 209)
6. Fuel for diesel piston engine shall conform to California Air Resources Board standards for reformulated diesel fuel. (Rule 209)
7. Equipment shall be maintained according to manufacturer's specifications to ensure compliance with emissions limitations. (Rules 210.1 and 209)
8. If engine is operated at same location within facility for more than one year, such unit shall comply with Rule 427. (Rule 427)
9. No emission resulting from use of this equipment shall cause injury, detriment, nuisance, annoyance to or endanger comfort, repose, health, or safety of any considerable number of persons or public. (Rule 419 and CH&SC, Sec 41700)

**COMPLIANCE TESTING REQUIREMENTS:**

Should inspection reveal conditions indicative of non-compliance, compliance with hourly and concentration emission limits shall be verified pursuant to Rule 108.1 and EKAPCD Guidelines for Compliance Testing, within 30 days of District request. (Rule 108.1)

**EMISSION LIMITS:**

Maximum emission rate of each air contaminant from this emission unit shall not exceed following limits:

Emission Unit 019 Permit Conditions

<b><u>Particulate Matter (PM<sub>10</sub>):</u></b>	0.43 lb/hr
	10.32 lb/day
	0.22 ton/yr
<b><u>Sulfur Oxides (as SO<sub>2</sub>):</u></b>	0.07 lb/hr
	1.70 lb/day
	0.04 ton/yr
<b><u>Oxides of Nitrogen (as NO<sub>2</sub>):</u></b>	6.13 lb/hr
	147.16 lb/day
	3.07 ton/yr
<b><u>Volatile Organic Compounds (VOC):</u></b> (as defined in Rule 210.1)	0.10 lb/hr
	2.34 lb/day
	0.05 ton/yr
<b><u>Carbon Monoxide:</u></b>	4.58 lb/hr
	109.90 lb/day

(Emission limits established pursuant to Rule 210.1, unless otherwise noted.)

Compliance with maximum daily emission limits shall be verified by source operator (with appropriate operational data and record keeping to document maximum daily emission rate) each day source is operated and such documentation of compliance shall be retained and made readily available to District for period of three years. (Rules 209 and 210.1)

Emission Unit 020 Permit Conditions

<u>Facility Number</u>	<u>Emissions Unit</u>	<u>Description of Source</u>
1128	020	<u>Piston Engine with Air Compressor #E90006</u>

**Emission Unit Equipment Description/Permit Conditions**

**Federally Enforceable Conditions**

**EQUIPMENT DESCRIPTION:** Piston Engine with Air Compressor #E90006, including following equipment:

One 195 bhp diesel piston engine powering portable air compressor.

**OPERATIONAL CONDITIONS:**

1. Engine shall have operational elapsed time meter (or approved equivalent method) indicating cumulative hours of engine operating time. (Rules 209 and 210.1)
2. Visible emissions from engine exhaust shall be less than 20% opacity or Ringelmann No. 1 except for not more than three minutes in any one hour. (Rule 401)
3. Exhaust gas particulate matter concentration shall be no more than 0.1 gr/scf. (Rule 404.1)
4. Engine operation shall be no more than 1,000 hours per year. (Rule 210.1)
5. Compliance with all operational conditions shall be verified by appropriate recordkeeping, including records of operational data needed to demonstrate compliance. Such records shall be kept on site in readily available format. (Rule 209)
6. Fuel for diesel piston engine shall conform to California Air Resources Board standards for reformulated diesel fuel. (Rule 209)
7. Equipment shall be maintained according to manufacturer's specifications to ensure compliance with emissions limitations. (Rules 210.1 and 209)
8. If engine is operated at same location within facility for more than one year, such unit shall comply with Rule 427. (Rule 427)
9. No emission resulting from use of this equipment shall cause injury, detriment, nuisance, annoyance to or endanger comfort, repose, health, or safety of any considerable number of persons or public. (Rule 419 and CH&SC, Sec 41700)

**COMPLIANCE TESTING REQUIREMENTS:**

Should inspection reveal conditions indicative of non-compliance, compliance with hourly and concentration emission limits shall be verified pursuant to Rule 108.1 and EKAPCD Guidelines for Compliance Testing, within 30 days of District request. (Rule 108.1)



Emission Unit 025 Permit Conditions

<u>Facility Number</u>	<u>Emissions Unit</u>	<u>Description of Source</u>
1128	025	<u>Emergency Use Piston Engine with Generator #E90777</u>

**Emission Unit Equipment Description/Permit Conditions**

**Federally Enforceable Conditions**

**EQUIPMENT DESCRIPTION:** Emergency Use Piston Engine with Generator #E90777, including following equipment:

One 400 bhp emergency use diesel piston engine powering electrical generator.

**OPERATIONAL CONDITIONS:**

1. Visible emissions shall be less than 20% opacity or Ringelmann No. 1 except for not more than three minutes in any one hour. (Rule 401)
2. Exhaust gas particulate matter concentration shall be no more than 0.1 gr/scf. (Rule 404.1)
3. Sulfur compounds emissions shall be no more than 0.2% (2,000 ppmv) calculated as sulfur dioxide (SO<sub>2</sub>). (Rule 407)
4. Engine operation shall be no more than 200 hours per year. (Rule 210.1 Offset Exemption)

Emission Unit 026 Permit Conditions

<u>Facility Number</u>	<u>Emissions Unit</u>	<u>Description of Source</u>
1128	026	<u>Emergency Use Piston Engine with Generator #51ED01</u>

**Emission Unit Equipment Description/Permit Conditions**

**Federally Enforceable Conditions**

**EQUIPMENT DESCRIPTION:** Emergency Use Piston Engine with Generator #51ED01, including following equipment:

One 165 bhp emergency use propane piston engine powering generator

**OPERATIONAL CONDITIONS:**

1. Visible emissions shall be less than 20% opacity or Ringelmann No. 1 except for not more than three minutes in any one hour. (Rule 401)
2. Exhaust gas particulate matter concentration shall be no more than 0.1-gr/scf. (Rule 404.1)
3. Sulfur compounds emissions shall be no more than 0.2% (2,000 ppmv) calculated as sulfur dioxide (SO<sub>2</sub>). (Rule 407)
4. Engine operation shall be no more than 200 hours per year. (Rule 210.1 Offset Exemption)

Emission Unit 028 Permit Conditions

<u>Facility Number</u>	<u>Emissions Unit</u>	<u>Description of Source</u>
1128	028	<u>Truck-Mounted Vacuum #90707</u>

**Emission Unit Equipment Description/Permit Conditions**

**Federally Enforceable Conditions**

**EQUIPMENT DESCRIPTION:** Truck-Mounted Vacuum #90707, including following equipment:

- A. One chassis;
- B. One 125 hp electric motor to drive blower and one small gasoline engine to operate hydraulic system; and
- C. Vacuum system with blower and 108 bag dust collector.

**OPERATIONAL CONDITIONS:**

1. Visible emissions shall be less than 20% opacity or Ringelmann No. 1 except for not more than three minutes in any one hour. (Rule 401)
2. Exhaust gas particulate matter concentration shall be no more than 0.1-gr/scf. (Rule 404.1)
3. Sulfur compounds emissions shall be no more than 0.2% (2,000 ppmv) calculated as sulfur dioxide (SO<sub>2</sub>). (Rule 407)

Emission Unit 033 Permit Conditions

<u>Facility Number</u>	<u>Emissions Unit</u>	<u>Description of Source</u>
1128	033	<u>Vacuum Type Fugitive Dust Yard Sweeper</u>

**Emission Unit Equipment Description/Permit Conditions**

**Federally Enforceable Conditions**

**EQUIPMENT DESCRIPTION:** Vacuum Type Fugitive Dust Yard Sweeper, including following equipment:

- A. Cylindrical broom sweeper;
- B. Auxiliary sidebrushes;
- C. Detachable vacuum wand;
- D. Stainless steel hopper;
- E. Two high vacuum fans;
- F. Fabric filter with filter screens; and
- G. Hydraulic shaker filter cleaner.

**OPERATIONAL CONDITIONS:**

- 1. Dust collector shall be equipped with operational pressure differential indicator. (Rule 209)
- 2. Material collected in dust collector shall be disposed of in manner preventing entrainment in atmosphere. (Rules 209 and 210.1)
- 3. Equipment shall be maintained according to manufacturer's specifications to ensure compliance with emissions limitations. (Rules 210.1 and 209)
- 4. Fabric dust collector on sweeper unit shall be in operation when equipment is operated. (Rule 210.1)
- 5. Particulate matter emissions discharged into atmosphere shall be no more than 0.1 grains/ft<sup>3</sup> of gas at standard conditions. (Rule 404.1)
- 6. Visible emissions from equipment shall be less than 20% opacity or Ringelmann No. 1 except for not more than three minutes in any one hour. (Rule 401)
- 7. No emission resulting from use of this equipment shall cause injury, detriment, nuisance, annoyance to or endanger comfort, repose, health, or safety of any considerable number of persons or public. (Rule 419 and CH&SC, Sec 41700)

**EMISSION LIMITS:**

Maximum emission rate of each air contaminant from this emission unit shall not exceed following limits:

**Particulate Matter (of PM<sub>10</sub>):**

- 0.10 gr/dscf (Rule 404.1)
- 1.37 lb/hr
- 10.97 lb/day
- 2.00 ton/yr

## Emission Unit 033 Permit Conditions

(Emission limits established pursuant to Rule 210.1, unless otherwise noted.)

Compliance with maximum daily emission limits shall be verified by source operator (with appropriate operational data and record keeping to document maximum daily emission rate) each day source is operated and such documentation of compliance shall be retained and made readily available to District for period of three years. (Rules 209 and 210.1)

DRAFT

Emission Unit 034 Permit Conditions

<u>Facility Number</u>	<u>Emissions Unit</u>	<u>Description of Source</u>
1128	034	<u>Synthetic Gypsum Receiving &amp; Storage</u>

**Emission Unit Equipment Description/Permit Conditions**

**Federally Enforceable Conditions**

**EQUIPMENT DESCRIPTION:** Synthetic Gypsum Receiving & Storage, including following equipment:

- A. Synthetic gypsum receiving hopper;
- B. One 40 hp blower;
- C. Dust pump (52-CX-01) with discharge to clinker storage silo 71-SL-04 or 71-SL-07 (ATC 1128006O);
- D. Synthetic gypsum storage silo (compartment) (71-SL-07); and
- E. Fabric collector (61-DC-05).

**OPERATIONAL CONDITIONS:**

- 1. Visible emissions from synthetic gypsum unloading and transfer operation shall be no more than 10% opacity. (Rule 422)
- 2. Fabric collector serving synthetic gypsum operation shall be in operation whenever material is being transferred into storage silo. (Rule 209)
- 3. Collected fines shall be disposed of in manner preventing entrainment in atmosphere. (Rule 209)

**STATE OF CALIFORNIA AIR TOXICS HOT SPOTS REQUIREMENTS:**

Facility shall comply with California Health and Safety Code, Sections 44300 through 44384. (Rule 208.1)

Emission Unit 035 Permit Conditions

<u>Facility Number</u>	<u>Emissions Unit</u>	<u>Description of Source</u>
1128	035	<u>Truck-Mounted Vacuum</u>

**Emission Unit Equipment Description/Permit Conditions**

**Federally Enforceable Conditions**

**EQUIPMENT DESCRIPTION:** Truck-Mounted Vacuum, including following equipment:

- A. Ford truck with 355 hp engine (permit exempt); and
- B. Vacuum unit including 5,200 cfm vacuum blower, 4 centrifugal separators and baghouse with reverse pulse cleaning mechanism.

**OPERATIONAL CONDITIONS:**

- 1. Vacuum unit exhaust particulate matter (PM<sub>10</sub>) concentration shall be no more than 0.02 gr/dscf. (Rule 210.1 BACT Requirement)
- 2. Baghouse shall be equipped with reverse pulse cleaning mechanism and operational pressure differential indicator. (Rule 209)
- 3. Visible emissions from vacuum unit exhaust shall be no more than 5% opacity or Ringelmann No. 3. (Rule 210.1 BACT Requirement)
- 4. Baghouse shall be in operation when vacuum unit is operated. (Rule 210.1)
- 5. Material collected in dust collector shall be disposed of in manner preventing entrainment in atmosphere. (Rules 209 and 210.1)
- 6. Equipment shall be maintained according to manufacturer=s specifications to ensure compliance with emissions limitations. Baghouse components and hoses shall be maintained on regular basis to prevent excessive emissions. (Rules 209 and 210.1)
- 7. Compliance with all operational conditions shall be verified by appropriate recordkeeping, including records of operational data needed to demonstrate compliance. Such records shall be kept on site in readily available format. (Rules 209 and 210.1)
- 8. No emission resulting from use of this equipment shall cause injury, detriment, nuisance, annoyance or endanger comfort, repose, health, or safety of any considerable number of persons or public. (Rule 419 and CH&SC, Sec 41700)

**COMPLIANCE TESTING REQUIREMENTS:**

Should inspection reveal conditions indicative of non-compliance, compliance with hourly and concentration emission limits shall be verified pursuant to Rule 108.1 and EKAPCD Guidelines for Compliance Testing, within 30 days of District request. (Rule 108.1)

Emission Unit 035 Permit Conditions

**EMISSION LIMITS:**

Maximum emission rate of each air contaminant from this emission unit shall not exceed following limits:

**Particulate Matter (of PM<sub>10</sub>):**

0.02 gr/dscf  
21.39 lb/day  
3.90 ton/yr

(Emission limits established pursuant to Rule 210.1, unless otherwise noted.)

Compliance with maximum daily emission limits shall be verified by source operator (with appropriate operational data and record keeping to document maximum daily emission rate) each day source is operated and such documentation of compliance shall be retained and made readily available to District for period of three years. (Rules 209 and 210.1)

Emission Unit 036 Permit Conditions

<u>Facility Number</u>	<u>Emissions Unit</u>	<u>Description of Source</u>
1128	036	<u>Cement Finish Mill #3</u>

**Emission Unit Equipment Description/Permit Conditions**

**Federally Enforceable Conditions**

**EQUIPMENT DESCRIPTION:** Cement Finish Mill #3, including following equipment:

- A. 100 ton capacity gypsum storage silo (71-SL-08) with weigh feeder (71-WF-08);
- B. Two 300 ton capacity clinker storage silos (71-SL-09 & '-10) with weigh feeders (71-WF-08 & '-10);
- C. 100 hp, 1000 acfm blower (71-BL-15) used to transfer material from delivery trucks to storage silo (71-SL-11);
- D. 150 ton capacity synthetic gypsum storage silo (71-SL-11) vented to fabric collector 71-DC-13;
- E. Synthetic gypsum weighfeeder (71-WF-11) and screw conveyor (71-SC-20), transferring material from storage silo (71-SL-11) to existing belt conveyor (71-BC-12) and vented to existing dust collector (71-DC-13);
- F. Synthetic gypsum weighfeeder (71-WF-11) transferring material from belt conveyor (72BC-12) and vented to dust collector (71-DC-13);
- G. Ball mill feed belt conveyor (71-BC-12);
- H. Fabric collector (62-DC-07) with fan (62-FA-07) serving storage silo 71-SL-08, '-09, & '-10, bucket elevator 62-BE-02 and weigh feeders (71-WF-08 '-09 & '-10);
- I. Ball mill (71-BM-03);
- J. Static separator (71-SP-04);
- K. Mill discharge air conveyor (71-AC-21 with diverter gate (71-DG-04);
- L. Bucket elevator (71-BE-04);
- M. Cooling cycle bucket elevator (71-BE-05) feeding cement cooler 71-CC-04;
- N. Fluidized cement cooler (71-CC-04);
- O. Cement cooler purge air conveyor (71-AC-28);
- P. Separator feed air conveyors (71-AC-22 and '-23) with diverter gates (71-DG-01, '-02, '-03);
- Q. Dynamic separator (71-SP-03);
- R. Separator rejects air conveyor (71-AC-24);
- S. Fabric collector (71-DC-08) with fan (71-FA-08 serving dynamic separator 71-SP-03 including discharge air conveyors 71-AC-25 and '-26 and bucket elevator 81-BE-01;
- T. Fabric collector (71-DC-09) with fan (71-FA-09) serving static separator 71-SP-04;
- U. Fabric collector discharge screw conveyors (71-SC-17, '-18, and '-19);
- V. Fabric collector (71-DC-10) with fan (71-FA-10) serving air conveyor 71-AC-21, cement cooler 71-CC-05, and bucket elevators 71-BE-04 and '-05;
- W. Air conveyor (71-AC-27) with discharge to bucket elevator 81-BE-01;
- X. Diverter gate (71-GA-21) from air pumps 71-CX-01 and '02 to alleviator 81-AL-01;
- Y. Fabric collector (71-DC-13) with fan (71-FA-13) serving belt conveyor 71-BC-12;
- Z. One 220-ton enclosed limestone silo 71-SL-12 with manual withdrawal shut-off gate;
- AA. One 212-ton enclosed gypsum silo 71-SL-13 with manual withdrawal shut-off gate;
- BB. One 250-ton enclosed pozzolan silo 71-SL-14 with rotary feeder and manual withdrawal;

## Emission Unit 036 Permit Conditions

- CC. Three weighfeeders 71-WF-14, -15 and -16 for the above silos. Each weighfeeder includes a scavenger chain drag (71-CD-17 (pending), 18 -19) to capture dust generated by material sticking to the belt and shaken loose at the return rollers;
- DD. Fabric dust collector 71-DC-19 with fan 71-FA-19, 4500 acfm, serving the silos discharge and the weighfeeders;
- EE. Belt conveyor 71-BC-13, collecting the material from the weighfeeders, discharging onto belt conveyor 71-BC-12 and served by fabric dust collector 71-DC-13; and
- FF. The unloading hopper (PTO #1128006) over belt conveyor 62-BC-10 will be removed.

### **OPERATIONAL CONDITIONS:**

1. Each fabric collector exhaust stack shall be equipped with provisions for collection of pollutant samples in manner consistent with U. S. EPA test methods. (Rule 210.1)
2. Particulate matter emissions from any single source operation shall be no more than 0.1 gr/scf. (Rule 404.1)
3. Fabric collectors shall be in operation when conveyors are in operation. (Rule 210.1)
4. Material collected in dust collectors shall be disposed in manner preventing entrainment in atmosphere. (Rule 209)
5. Fabric collectors shall have operational differential pressure indicators. (Rule 209)
6. Visible emissions from all emission points shall be less than 5% opacity except bulk storage, which shall be less than 10% opacity. (Rule 210.1 BACT)
7. All material conveyors shall be covered/enclosed and shall have no visible emissions. (Rules 209 and 210.1 BACT)
8. All piping, ducting, connections, and elevators shall be leak-tight and shall have no visible emissions. (Rule 209)
9. Dust collectors shall have operational pressure differential indicators on each compartment. (Rule 209)
10. Visible emissions from equipment installed pursuant to Authority to Construct 1128036 shall be less than 5% opacity. (Rule 210.1 BACT)
11. Conveyors shall be covered when in operation. (Rule 209)
12. Fines collected in dust collectors shall be returned to process. (Rule 210.1)
13. Fabric collectors shall be in operation whenever finish mill is operating. (Rule 210.1)
14. Equipment shall be maintained according to manufacturer's specifications to ensure compliance with emissions limitations. (Rules 209 and 210.1)
15. Compliance with all operational conditions shall be verified by appropriate recordkeeping, including records of operational data needed to demonstrate compliance. Such records shall be kept on site in readily available format. (Rule 209)
16. No emission resulting from use of this equipment shall cause injury, detriment, nuisance, annoyance to or endanger comfort, repose, health, or safety of any considerable number of persons or public. (Rule 419 and CH&SC, Sec 41700)

### **STATE OF CALIFORNIA AIR TOXICS HOT SPOTS REQUIREMENTS:**

Facility shall comply with California Health and Safety Code, Sections 44300 through 44384. (Rule 208.1)

**COMPLIANCE TESTING REQUIREMENTS:**

Should inspection reveal conditions indicative of non-compliance, compliance with fabric collector emission limitations shall be verified, within 60 days of District request. (Rule 108.1)

**Particulate Matter (PM<sub>10</sub>):**

Fabric Collector (62-DC-07)	0.011	gr/scf
	0.66	lb/hr
	15.84	lb/day
	2.89	ton/yr
Fabric Collector (71-DC-13)	0.011	gr/scf
	0.38	lb/hr
	9.05	lb/day
	1.65	ton/yr
Fabric Collector (71-DC-08)	0.011	gr/scf
	11.50	lb/hr
	276.07	lb/day
	50.38	ton/yr
Fabric Collector (71-DC-09)	0.011	gr/scf
	3.46	lb/hr
	83.05	lb/day
	15.16	ton/yr
Fabric Collector (71-DC-10)	0.011	gr/scf
	0.96	lb/hr
	23.10	lb/day
	4.22	ton/yr
Fabric Collector (71-DC-19)	0.003	gr/scf
	0.08	lb/hr
	1.94	lb/day
	0.36	ton/yr

(Emission limits established pursuant to Rule 210.1, unless otherwise noted.)

Compliance with maximum daily emission limits shall be verified by source operator (with appropriate operational data and record keeping to document maximum daily emission rate) each day source is operated and such documentation of compliance shall be retained and made readily available to District for period of three years. (Rules 209 and 210.1)

**SPECIAL CONDITIONS:**

- aa) National Cement shall provide District with a written notification of any ARB PERP equipment operation according to notification requirements listed on the permit. National Cement shall maintain records of all ARB PERP permits for five years and no ARB PERP equipment shall be operated in a manner consistent with a stationary application, i.e. routine and predictable, without prior District approval.
- bb) The owner or operator shall perform CARB Method 5 on fabric collector 71-DC-19 to determine compliance with the BACT grain loading of 0.003 gr/scf no later than 60 days after startup. District must be notified 30 days prior to any compliance source testing and the owner shall submit a source test plan for District approval 15 days prior to source sampling. Results shall be submitted to the District no later than 60 days within the test date. (Rules 108.1 and 210.1)

DRAFT

Emission Unit 037 Permit Conditions

<u>Facility Number</u>	<u>Emissions Unit</u>	<u>Description of Source</u>
1128	037	<u>Emergency Piston Engine with Generator</u>

**Emission Unit Equipment Description/Permit Conditions**

**Federally Enforceable Conditions**

**EQUIPMENT DESCRIPTION:** Emergency Piston Engine with Generator, including following equipment:

Portable emergency electrical generator driven by 196-bhp turbocharged and aftercooled diesel-fired piston engine.

**OPERATIONAL CONDITIONS:**

1. Engine crankcase vent shall be equipped with positive ventilation system or 90% efficient control device for crankcase VOC emissions. (Rule 210.1, BACT Requirement)
2. Engine shall be equipped with turbocharger. (Rule 210.1, BACT Requirement)
3. Engine shall have operational elapsed time meter (or approved equivalent method) indicating cumulative hours of engine operating time. (Rule 210.1)
4. Visible emissions from engine exhaust after engine has reached normal operating temperature shall not exceed 5% opacity or Ringelmann No. 3 for more than three minutes in any one hour. (Rule 210.1, BACT Requirement)
5. Exhaust gas particulate matter concentration shall not exceed 0.1 grain/ft<sup>3</sup> of gas at standard conditions. (Rule 404.1)
6. Engine timing shall be retarded 4° from standard. (Rule 210.1, BACT Requirement)
7. Fuel for diesel piston engine shall conform to California Air resources board standards for reformulated diesel fuel. (Rule 210.1, BACT Requirement)
8. Engine operation shall not exceed 200 hours per year without prior District approval. (Rule 210.1)
9. Equipment shall be maintained according to manufacturer=s specifications to ensure compliance with emissions limitations. (Rule 210.1, BACT Requirement)
10. Compliance with all operational conditions shall be verified by appropriate record keeping including records of operational data needed to demonstrate compliance. Such records shall be kept on site in readily available format. (Rule 209)
11. No emission resulting from use of this equipment shall cause injury, detriment, nuisance, annoyance to or endanger comfort, repose, health, or safety of any considerable number of persons or public. (Rule 419 and CH&SC, Section 41700)
12. Emergency use engine shall not be operated as part of a voluntary power curtailment program. (Rule 210.1)

**STATE OF CALIFORNIA AIR TOXICS HOT SPOTS REQUIREMENTS:**

Facility shall comply with California Health and Safety Code, Sections 44300 through 44384. (Rule 208.1)

**COMPLIANCE TESTING REQUIREMENTS:**

Should inspection reveal conditions indicative of non-compliance, compliance with hourly and concentration emission limits shall be verified pursuant to Rule 108.1 and EKAPCD Guidelines for Compliance Testing, within 60 days of district request. (Rule 108.1)

**EMISSION LIMITS:**

Maximum emission rate of each air contaminant from this emission unit shall not exceed following limits

**Particulate Matter (PM<sub>10</sub>):**                    0.17 lb/hr  
    4.15 lb/day  
    0.02 ton/yr

**Sulfur Oxides (as SO<sub>2</sub>):**                    0.21 lb/hr  
    4.98 lb/day  
    0.02 ton/yr

**Oxides of Nitrogen (as NO<sub>2</sub>):**            5.84 lb/hr  
    140.21 lb/day  
    0.58 ton/yr

**Volatile Organic Compounds (VOC):**    0.21 lb/hr  
    4.98 lb/day  
    0.02 ton/yr

**Carbon Monoxide:**                        0.77 lb/hr  
    18.56 lb/day  
    0.08 ton/yr

(Emission limits established pursuant to Rule 210.1, unless otherwise noted.)

Compliance with maximum daily emission limits shall be verified by source operator (with appropriate operational data and record keeping to document maximum daily emission rate) each day source is operated and such documentation of compliance shall be retained and made readily available to District for period of three years. (Rules 209 and 210.1)

**SPECIAL CONDITIONS:**

- aa. All equipment shall be designed, installed and operated as described in application for Authority to Construct unless advance approval is granted for alternative.
- bb. This source is exempt from PSD review because of PM<sub>10</sub> emission reductions made from existing operations concurrently with new equipment installation. Any relaxation in this limit which increases your potential to emit above the applicable PSD threshold will require a full PSD review of the affected source as if construction had not yet commenced.

Emission Unit 038 Permit Conditions

<u>Facility Number</u>	<u>Emissions Unit</u>	<u>Description of Source</u>
1128	038	<u>Screening Plant</u>

**Emission Unit Equipment Description/Permit Conditions**

**Federally Enforceable Conditions**

**EQUIPMENT DESCRIPTION:** Screening Plant, including following equipment:

- A. One 10' by 7' inclined screen;
- B. One diesel engine (exempt) equipped with air cleaner; and
- C. One discharge conveyor.

**OPERATIONAL CONDITIONS:**

- 1. Indoor clinker screening and associated processes shall occur only within clinker storage building. (Rule 210.1 BACT Requirement)
- 2. Indoor clinker screening throughput shall not exceed 35,000 tons per year without prior District approval (Rule 210.1)
- 3. Outdoor screening shall be limited to only petroleum coke storage pile. No other outdoor material shall be screened without prior District approval. (Rule 210.1)
- 4. Outdoor petroleum coke storage pile shall contain at least 8% moisture content. (Rule 210.1)
- 5. Dust suppressant or water shall be applied to petroleum coke if visible emissions exceed 10%. (Rule 210.1)
- 6. Drop heights shall be kept at a minimum to limit visible emissions. (Rule 210.1)
- 7. Visible emissions from clinker storage, conveyor transfer points and bulk loading and unloading systems shall be limited to 10% opacity. (Rule 422)
- 8. Operation of this equipment shall be conducted in compliance with data and specifications submitted with application under which this permit is issued. (Rule 210.1)
- 9. Equipment shall be maintained according to manufacturer's specifications to ensure compliance with emission limitations. (Rule 210.1)
- 10. No emission resulting from use of this equipment shall cause injury, detriment, nuisance, annoyance to or endanger comfort, repose, health or safety of any considerable number of persons or public. (Rule 419 and CH&SC, Sec 41700)

**STATE OF CALIFORNIA AIR TOXICS HOT SPOTS REQUIREMENTS:**

Facility shall comply with California Health and Safety Code, Sections 44300 through 44384. (Rule 208.1)

**COMPLIANCE TESTING REQUIREMENTS:**

Should inspection reveal conditions indicative of non-compliance, compliance with hourly and concentration emission limits shall be verified pursuant to Rule 108.1 and EKAPCD Guidelines for Compliance Testing, within 30 days of District request. (Rule 108.1)

Emission Unit 038 Permit Conditions

**EMISSION LIMITS:**

Maximum emission rate of each air contaminant from this emission unit shall not exceed following limits:

**Particulate Matter (of PM<sub>10</sub>):**

0.16 lbm/hr

0.14 ton/yr

(Emission limits established pursuant to Rule 210.1, unless otherwise noted.)

Compliance with maximum daily emission limits shall be verified by source operator (with appropriate operational data and record keeping to document maximum daily emission rate) each day source is operated and such documentation of compliance shall be retained and made readily available to District for period of three years. (Rules 209 and 210.1)

<u>Facility Number</u>	<u>Emissions Unit</u>	<u>Description of Source</u>
1128	039	<u>Tire Derived Fuel Receiving, Storage and Handling Equipment</u>

**Emission Unit Equipment Description/Permit Conditions**

**Federally Enforceable Conditions**

**EQUIPMENT DESCRIPTION:** Tire Derived Fuel Receiving, Storage and Handling Equipment, including following equipment:

- A. Two storage bins equipped with "live" bottoms (54-BN-05 and -06);
- B. Two weighfeeders (one for each bin in item A) to measure the TDF addition to the precalciner burner (54-WF-05 and -06);
- C. Three enclosed outdoor storage containment structures to house TDF;
- D. Belt conveyor transferring TDF from the weighfeeders in Item B to a metering feeder;
- E. Transfer feeder (54-VF-01) transferring the TDF from the conveyor belt in item D to an airlock;
- F. Airlock to prevent loss of heat from the precalciner and provide a safety feature against blowback (54-TV-07);
- G. One fabric filter dust collector rated at 10 hp and 3700 dscfm equipped with a total of 1092 square feet of filter area and configured for an air to cloth ratio of 3.49:1;
- H. One fabric filter dust collector rated at 10 hp and 2400 dscfm equipped with a total of 691 square feet of filter area and configured for an air to cloth ratio of 3.47:1;
- I. Calciner burner chamber (51-BU-02);
- J. TDF hopper, conveyor screw, blower, eductor and piping (PTO No. 1128040);
- K. One 1500 gallon surfactant storage tank;
- L. Control panel for optimizing the addition of surfactant;
- M. TDF Surfactant spray nozzles located at three (3) points:
  - 1. Discharge of weighfeeder 54WF01;
  - 2. Discharge of belt conveyor 54BC01;
  - 3. Discharge of vibrating conveyor 54VF01; and
- N. Associated piping for water, surfactant and compressed air.

**OPERATIONAL CONDITIONS:**

- 1. Average tire chip size shall not be smaller than one inch. (Rules 209 and 405)
- 2. Outdoor storage area shall not exceed 5,000 square feet of continuous area and 50,000 cubic feet in volume. (California Fire Code)
- 3. TDF shall include only chipped tires and/or tire fluff with a heat value of at least 10,000 Btu per pound. TDF shall be utilized solely for fuel in the preheater/precalciner cement kiln system. Average fuel chip size shall not be smaller than one inch. Tire fluff may be smaller than one inch and is defined as a shredded byproduct of waste tire processing, which contains crumbed rubber, cord and small amounts of steel. TDF usage shall not include utilization of whole tires. (Rule 210.1)
- 4. TDF transfer to kiln system shall be limited to percentage specified in current version of ATC/PTO 1128004. (Rule 210.1)

## Emission Unit 039 Permit Conditions

5. Tire chip storage shall be limited to covered trailers or storage bins during normal operations. (Rules 209, 210.1 BACT and 401)
6. Tire chips shall be stored on concrete. (Rules 209, 210.1 BACT and 401)
7. No tire chips or tire fluff shall be stored on dirt, except in emergency situations. (Rules 209, 210.1 BACT and 401)
8. Tire fluff shall be under covered storage and conveyed pneumatically and/or via belt conveyor according to the location of use (i.e. rotary kiln and/or precalciner). (Rule 210.1)
9. No fluff shall be open-stored. (Rules 209, 210.1, 402 and 419)
10. Applicant shall transfer tire chips from covered trailers directly to storage bins during normal operations. (Rule 210.1 and 401)
11. There shall be no visible emissions from operation, except for receiving hopper, 54-BN-05. (Rule 210.1 BACT)
12. Operation of this equipment shall be conducted in compliance with all data and specifications submitted with application under which this permit is issued. (Rule 210.1)
13. No emission resulting from use of this equipment shall cause injury, detriment, nuisance, annoyance to or endanger comfort, repose, health, or safety of any considerable number of persons or public. (Rule 419 and CH&SC, Sec 41700)

### **STATE OF CALIFORNIA AIR TOXICS HOT SPOTS REQUIREMENTS:**

Facility shall comply with California Health and Safety Code, Sections 44300 through 44384. (Rule 208.1)

Emission Unit 040 Permit Conditions

<u>Facility Number</u>	<u>Emissions Unit</u>	<u>Description of Source</u>
1128	040	<u>Solid Fuel Receiving/Handling System</u>

**Emission Unit Equipment Description/Permit Conditions**

**Federally Enforceable Conditions**

**EQUIPMENT DESCRIPTION:** Solid Fuel Receiving/Handling System, including following equipment:

- A. Three outdoor enclosed storage containment structures to house TDF (shared with ATC No. 1128039);
- B. Receiving hopper (54-BN-05);
- C. Screw conveyor to transfer TDF from the hopper to the weigh feeder (54-SF-05);
- D. Weigh feeder to measure the amount of TDF introduced to the system (54-WF-05);
- E. Blower and associated ducting to convey the TDF to the precalciner (54-BL-05); and
- F. Piping to convey TDF to the main burner at the rotary kiln.

**OPERATIONAL CONDITIONS:**

1. Average fuel chip size shall not be smaller than one inch. (Rules 209 and 405)
2. TDF shall include only chipped tires and/or tire fluff with a heat value of at least 10,000 Btu per pound. TDF shall be utilized solely for fuel in the cement kiln. Average fuel chip size shall not be smaller than one inch. Tire fluff may be smaller than one inch and is defined as a shredded byproduct of waste tire processing, which contains crumbed rubber, cord and small amounts of steel. TDF usage shall not include utilization of whole tires. (Rule 210.1)
3. Receiving and conveying operation shall be used for solid fuel only. (Rules 209 and 210.1)
4. No fuel shall be stored on dirt. (Rules 209, 210.1 BACT and 401)
5. Owner/ operator shall take measures necessary to prevent formation of dust on fuel, i.e. short-term storage, enclosed or covered piles. (Rules 209, 210.1 BACT and 401)
6. Tire fluff shall be totally enclosed and conveyed pneumatically, except for receiving hopper 54-BN-05. (Rules 209, 210.1, 402 and 419)
7. There shall be no visible emissions from operation, except for receiving hopper 54-BN-05. (Rule 210.1 BACT)
8. Operation of this equipment shall be conducted in compliance with all data and specifications submitted with application under which this permit is issued. (Rule 210.1)
9. No emission resulting from use of this equipment shall cause injury, detriment, nuisance, annoyance to or endanger comfort, repose, health, or safety of any considerable number of persons or public. (Rule 419 and CH&SC, Sec 41700)

**STATE OF CALIFORNIA AIR TOXICS HOT SPOTS REQUIREMENTS:**

Facility shall comply with California Health and Safety Code, Sections 44300 through 44384. (Rule 208.1)

Emission Unit 041 Permit Conditions

<u>Facility Number</u>	<u>Emissions Unit</u>	<u>Description of Source</u>
1128	041	<u>Truck-Mounted Vacuum</u>

**Emission Unit Equipment Description/Permit Conditions**

**Federally Enforceable Conditions**

**EQUIPMENT DESCRIPTION:** Truck-Mounted Vacuum, including following equipment:

- A. Truck with a diesel-fueled engine (permit exempt); and
- B. Vacuum loader including 5300 cfm blower, integral cyclone, baghouse and vacuum recovery cleaning mechanism.

**OPERATIONAL CONDITIONS:**

- 1. Hours of operation shall not exceed 16 hours per day without prior District approval. (Rule 210.1)
- 2. Vacuum unit exhaust particulate matter (PM<sub>10</sub>) concentration shall be no more than 0.011 gr/dscf. (Rule 210.1 BACT Requirement)
- 3. Dust collector shall be equipped with vacuum recovery cleaning mechanism. (Rule 209)
- 4. Visible emissions from vacuum unit exhaust shall be no more than 5% opacity or Ringelmann No. ¼. (Rule 210.1 BACT Requirement)
- 5. Baghouse shall be in operation when vacuum unit is operated. (Rule 210.1)
- 6. Material collected in dust collector shall be disposed of in manner preventing entrainment in atmosphere. (Rules 209 and 210.1)
- 7. Equipment shall be maintained according to manufacturer's specifications to ensure compliance with emissions limitations. Baghouse components and hoses shall be maintained on regular basis to prevent excessive emissions. (Rules 209 and 210.1)
- 8. Compliance with all operational conditions shall be verified by appropriate record keeping, including records of operational data needed to demonstrate compliance. Such records shall be kept on site in readily available format. (Rules 209 and 210.1)
- 9. No emission resulting from use of this equipment shall cause injury, detriment, nuisance, annoyance or endanger, comfort, repose, health, or safety of any considerable number of persons or public. (Rule 419 and CH&SC, Sec 41700)

**STATE OF CALIFORNIA AIR TOXICS HOT SPOTS REQUIREMENTS:**

Facility shall comply with California Health and Safety Code, Sections 44300 through 44384. (Rule 208.1)

**COMPLIANCE TESTING REQUIREMENTS:**

Should inspection reveal conditions indicative of non-compliance, compliance with hourly and concentration emission limits shall be verified pursuant to Rule 108.1 and EKAPCD Guidelines for Compliance Testing, within 30 days of District request. (Rule 108.1)

Emission Unit 041 Permit Conditions

**EMISSION LIMITS:**

Maximum emission rate of each air contaminant from this emission unit shall not exceed following limits:

**Particulate Matter (of PM<sub>10</sub>):**

- 0.011 gr/dscf (BACT)
- 0.50 lb/hr
- 8.00 ton/yr
- 1.46 ton/yr

(Emission limits established pursuant to Rule 210.1, unless otherwise noted.)

Compliance with maximum daily emission limits shall be verified by source operator (with appropriate operational data and record keeping to document maximum daily emission rate) each day source is operated and such documentation of compliance shall be retained and made readily available to District for period of three years. (Rules 209 and 210.1)

Emission Unit 042 Permit Conditions

<u>Facility Number</u>	<u>Emissions Unit</u>	<u>Description of Source</u>
1128	042	<u>Preheater/Precalciner Cement Kiln System</u>

**Emission Unit Equipment Description/Permit Conditions**

**Federally Enforceable Conditions**

**EQUIPMENT DESCRIPTION:** Preheater/Precalciner Cement Kiln System, including following equipment:

- A. Blending silo (south, 42-SL-01) ventilated to item D;
- B. Blending silo (center, 42-SL-02) ventilated to item D;
- C. Blending silo (north, 42-SL-03) ventilated to item D;
- D. Fabric collector (42-DC-02) with fines conveyor (42-SC-07);
- E. Air conveyor (42-AC-13) from silo (42-SL-01);
- F. Air conveyor (42-AC-14) from silo (42-SL-02);
- G. Air conveyor (42-AC-15) from silo (42-SL-02);
- H. Air conveyor (42-AC-16) from silo (42-SL-03);
- I. Elevator (north, 42-BE-02);
- J. Elevator (south, 42-BE-03);
- K. Mix box (42-MB-01);
- L. One air conveyor (42-AC-19);
- M. Air conveyor (42-AC-24);
- N. Air conveyor (51-AC-02) served by 7,100 acfm pulse jet fabric collector (51-DC-09);
- O. Two diverter gates (42-DG-08 and 42-DG-09);
- P. Bucket elevator (42-BE-06 and 60 hp) served by dust collector (42-DC-08) and fan (42-FA-08) (1945 dscfm and 7.5 hp);
- Q. Air conveyor (42-AC-25) with blower (42-BL-12 and 5 hp);
- R. Constant level bin (42-BN-01) equipped with blower (42-BL-13 and 20 hp), and served by dust collector (42-DC-09) and fan (4860 dscfm and 15 hp);
- S. Weigh scale (42-WS-02);
- T. Two air conveyors (42-AC-26 and 42-AC-27), transporting material from bin (42-BN-01) to air conveyor 42-AC-28, with blower 42-BL-14 (10 hp);
- U. Fuel oil storage tank (51-TK-01, permit exempt);
- V. 150 MMBtu/hour coke/TDF/natural gas-fueled, precalciner preceded by multi-stage preheater (51-PH-01);
- W. Rotary cement kiln system (51-KN-01) with one multi-channel Fuller Duoflex low NOx burner with provisions to introduce #2 fuel oil, natural gas, petroleum coke, or TDF with a nominal rating of 10 ton/hr of coke for production of approximately 3,400 ton/day clinker;
- X. Evaporative cooling tower (51-CT-01) with hopper and 24 inch screw conveyor; (existing)
- Y. Rotary valve (51-RV-29);
- Z. Tempering air damper (51-DA-34);

## Emission Unit 042 Permit Conditions

- AA. Bucket elevator (51-BE-03) with 280 feet lift served by 8,200 acfm pulse jet fabric collector (51-DC-08);
- BB. 70-ton capacity cement kiln system feed recirculation bin (51-BN-02) receiving bypass material from bucket elevator (51-BE-03);
- CC. Cement kiln system fabric collector (51-BH-02), including pulse jet air cleaning mechanism, rated at 300,000 acfm @ 450° F;
- DD. Cement kiln system fabric collector exhaust fan (51-FA-11) rated at 300,000 acfm @ 17 inches w.c. and 450° F, cement kiln system and preheater ID fan (51-FA-15) rated at 300,000 acfm @ 28 in. w.c. and 450° F, exhausting to circular cross section exhaust stack;
- EE. Cement kiln system exhaust ductwork, 7 ft. 6 in. ID, from evaporative cooling tower (51-CT-01), to cement kiln system fabric collector (51-BH-02); and
- FF. Fabric collector (51-BH-02) exhaust ductwork, 8 ft. 6 in ID, from exhaust fan to exhaust stack. (existing)
- GG. NaOH injection system including 1000-gallon polyethylene storage tank with aqueous 25% NaOH, transfer pump delivering NaOH to system feeding conditioning tower, associated piping and valves.

### **OPERATIONAL CONDITIONS:**

1. TDF shall include only chipped tires and/or tire fluff with a heat value of at least 10,000 Btu per pound. TDF shall be utilized solely for fuel in the cement kiln system. Average fuel chip size shall not be smaller than one inch. Tire fluff may be smaller than one inch and is defined as a shredded byproduct of waste tire processing, which contains crumbed rubber, cord and small amounts of steel. TDF usage shall not include utilization of whole tires. (Rule 210.1)
2. If opacity of stack emissions equals or exceeds 5% or Ringelmann No. 1/4 during normal operation, District-witnessed particulate emissions sampling shall be performed to demonstrate compliance with particulate emission limits. (Rules 108.1 and 209)
3. All fines collected in dust collectors shall be returned to process. (Rule 210.1)
4. Exhaust stack gas NO<sub>x</sub> emissions shall not exceed 3.40 lb/ton of clinker (as NO<sub>2</sub>) when averaged over any 30 consecutive day period, excluding periods of non-production. (Rules 425.3 and 210.1 BACT)
5. Dust collectors or water spray(s) shall be provided at all raw material transfer and crushing points upstream of cement kiln system with potential to emit dust. Each water spray installation shall deliver sufficient water to eliminate visible emissions. (Rule 210.1)
6. All raw material conveyors upstream of cement kiln system shall be covered/enclosed and shall not exhibit visible emissions. (Rules 209 and 210.1)
7. Each fabric collector shall have operational differential pressure indicator(s). (Rule 210.1)
8. Cement kiln system shall be fired only with petroleum coke, natural gas, fuel oil, or TDF. No other combustible products shall be added to cement kiln system without prior written permission of Control Officer. (Rule 210.1)
9. Compliance with all operational conditions shall be verified by appropriate record keeping, including records of clinker production and other operational data needed to demonstrate compliance. Such records shall be kept on site in readily available format. (Rule 107)
10. No emission resulting from use of this equipment shall cause injury, detriment, nuisance, annoyance to or endanger comfort, repose, health, or safety of any considerable number of persons or public. (Rule 419 and CH&SC, Sec 41700)

## Emission Unit 042 Permit Conditions

11. TDF shall not exceed the percentage by weight of total pyroprocessing system fuel, as listed in “Special Conditions ff and gg” and calculated over a 180 minute rolling average without prior District approval and toxics testing. (Rule 210.1 and per application)
12. TDF shall be stored according to the approved site plan reviewed and the Certificate of Compliance issued by the Kern County Fire Department. (Rule 210.1)
13. Equipment breakdowns resulting in non-compliance with any emission limitations shall be reported pursuant to Rules 111 and 422. (Rule 422, Subpart F)
14. Cement kiln system shall be operated using TDF only when all pyroprocessing system control equipment is operated pursuant to manufacturer’s recommendations resulting in particulate emissions not exceeding 0.015 gr/scf and 0.30 lbm/ton of kiln feed. (Rules 210.1 and 422, Subpart F)
15. National Cement shall maintain files including: a) data collected from in-stack monitoring instruments and process monitoring, b) fuel input rate, c) clinker production rates, and d) results of all source tests and calibration checks.
16. Exhaust stack shall be equipped with continuous emission monitors/ recorders, secured against tampering after calibration, for opacity, and nitrogen oxides; and precalciner combustion chamber shall be equipped with continuous monitors/ recorders for oxygen, oxides of nitrogen and carbon monoxide. Exhaust stack monitors shall be accessible to staff via remote connection approved by the APCO and provide data for the last 24 hours. (Rules 209 and 210.1)
17. APCO or any authorized representative shall upon request have access to, and be provided with, copies of any record required to be kept under terms conditions of this permit. Furthermore, such persons shall have access to inspect any equipment, operation, or method required in this permit, and to sample, or require sampling, of emission sources. (Rule 107)

### **STATE OF CALIFORNIA AIR TOXICS HOT SPOTS REQUIREMENTS:**

Facility shall comply with California Health and Safety Code, Sections 44300 through 44384. (Rule 208.1)

### **COMPLIANCE TESTING REQUIREMENTS:**

Annual testing for compliance with volatile organic compound, particulate, and oxides of nitrogen emission limits shall be demonstrated by District-witnessed sample collection by certified testing laboratory pursuant to Rule 108.1.

Source test shall utilize hourly emissions limits on this permit to determine compliance.

For the purpose of determining compliance with an applicable standard or numerical limitation, the arithmetic mean of three test runs shall apply, unless two of the three results are above the applicable limit. If two of three runs are above an applicable limit the test cannot be used to demonstrate compliance with an applicable limit.

If this permit utilizes an hourly rolling average or daily emission limits to determine normal compliance, only the hourly emission limit (rolling average shall not be utilized) or 1/24<sup>th</sup> of daily emission limits shall be utilized to determine compliance for the required annual source test.

Should inspection reveal conditions indicative of non-compliance, compliance with hourly and concentration emission limits shall be verified pursuant to Rule 108.1 and EKAPCD Guidelines for Compliance Testing, within 30 days of District request. (Rule 108.1)

Emission Unit 042 Permit Conditions

**EMISSION LIMITS:**

Maximum emission rate of each air contaminant from Cement Kiln System Fabric Collectors (Kiln Fabric Collector) shall not exceed following emissions limitations (hourly limits may be averaged over 24 hour period):

**Particulate Matter:**

From Kiln Fabric Collector (51-BH-02):  
0.015 gr/scf  
0.3 lbm/ton of feed to kiln (Rule 422)  
40.00 lbm/hr  
960.00 lbm/day  
175.20 ton/yr

From Kiln Feed Fabric Collector (51-DC-08):  
0.01 gr/acfm  
0.70 lbm/hr  
16.87 lbm/day  
3.08 ton/yr

From Kiln Feed Fabric Collector (51-DC-09):  
0.01 gr/acfm  
0.61 lbm/hr  
14.61 lbm/day  
2.67 ton/yr

From Bucket Elevator Dust Collector (42-DC-08):  
0.01 gr/acfm  
0.17 lbm/hr  
4.01 lbm/day  
0.73 ton/yr

From Constant Level Bin Dust Collector (42-DC-09):  
0.01 gr/acfm  
0.42 lbm/hr  
10.01 lbm/day  
1.83 ton/yr

**Sulfur Oxides:**

From Kiln Fabric Collector (51-BH-02):  
53.83 lbm/hr (as SO<sub>2</sub>)  
1,291.92 lbm/day (as SO<sub>2</sub>)  
5.83 lbm/hr (as SO<sub>4</sub>)  
139.92 lbm/day (as SO<sub>4</sub>)

Emission Unit 042 Permit Conditions

**Oxides of Nitrogen (as NO<sub>2</sub>):**

From Kiln Fabric Collector (51-BH-02):	3.4	lbm/ton of clinker (Rule 210.1 BACT)
	481.67	lbm/hr (Rule 210.1 BACT)
	11,560.00	lbm/day (30 day rolling average)
	1,992.90	ton/yr (365 day rolling average)

**Volatile Organic Compounds (VOC):**

From Kiln Fabric Collector (51-BH-02):	240.00	lbm/day
	43.80	ton/yr

**Carbon Monoxide:**

From Kiln Fabric Collector 51-BH-02	1,200.00	lbm/hr
	28,800.00	lbm/day
	5,256.00	ton/yr

**Dioxins/ Furans:**

From Kiln Fabric Collector 51-BH-02	0.4	ng TEQ/dscm (Rule 419)
-------------------------------------	-----	------------------------

(Emission limits established pursuant to Rule 210.1, unless otherwise noted.)

Compliance with maximum daily emission limits shall be verified by source operator (with appropriate operational data and record keeping to document maximum daily emission rate) each day source is operated and such documentation of compliance shall be retained and made readily available to District for period of three years. (Rules 209 and 210.1)

**SPECIAL CONDITIONS:**

- aa. Increases in fugitive dust emissions from equipment, haul roads, storage piles, etc., due to production increases shall be offset through use of best available control provisions such as increased use of water spray application and/or use of dust palliatives. Particulate control for all haul roads shall be no less than 79.6% and shall be achieved by application of water or EKAPCD-approved dust palliative(s). (Rules 209 and 210.1)
- bb. Visible fugitive dust emissions from all haul roads shall not exceed 10% opacity. (Rules 209 and 210.1 BACT)
- cc. Reports of excess emissions shall be submitted semiannually for all opacity exceedances of 6 minutes or longer. Report shall comply with requirements of Code of Federal Regulations Section 40 Part 60.7c. (Rule 422)

Emission Unit 042 Permit Conditions

dd. Throughputs and fugitive dust emissions shall not exceed following limits:

<b>Source</b>	<b>Maximum Throughput</b>	<b>PM-10 Emissions</b>
	<b>Tons/Year</b>	<b>Tons/Year</b>
Quarry Drilling	1,726,452	0.09
Quarry Blasting	1,726,452	3.89
	<b>Maximum</b>	
	<b>Vehicles Miles</b>	<b>Tons/Year</b>
Haul Road	270,188	447.97
Waste Dust Haul Road	0	0
Waste Dust Stockpile	0	0
<b>Total PM-10 Emissions in Tons Per Year</b>		<b>451.95</b>

Written records to demonstrate compliance with these limits shall be maintained and made immediately available for District examination. (Rules 107 and 210.1 and EKAPCD Fugitive Dust Policy #95-02)

- ee. No new unpaved roadways shall be constructed or utilized without prior written approval from District. (Rule 210.1)
- ff. National Cement shall perform toxic air contaminant testing within sixty days of the steady state operation of the kiln utilizing 37-42 percent TDF as a replacement fuel. Emission values from TDF source testing shall be used to update air dispersion modeling performed for the health risk assessment used for the TDF Addendum EIR. The health risk assessment shall be submitted to the District within 180 days of achieving 37-42 percent TDF utilization. After testing is completed, National Cement shall not utilize TDF in amounts greater than 32 percent until the revised health risk assessment has been received and the District has determined that the revised health risk assessment for 37-42 percent TDF utilization are consistent with the TDF Addendum EIR. Upon approval of the health risk assessment for 37 to 42 percent TDF utilization, TDF limitation shall be 42 percent or less. (Rule 419, CEQA and CH&SC 41700)
- gg. National Cement shall perform toxic air contaminant testing within sixty days of the steady state operation of the kiln utilizing 46-50 percent TDF as a replacement fuel. Emission values from TDF source testing shall be used to update air dispersion modeling performed for the health risk assessment used for the TDF Addendum EIR. The health risk assessment shall be submitted to the District within 180 days of achieving 46-50 percent TDF utilization. Except during a specified period of testing equipment and emissions approved by the APCO at least 30 days prior to testing, National Cement shall not utilize TDF in amounts greater than the percentage allowed by “Special Condition ff” until the revised health risk assessment has been received and the District has determined that the revised health risk assessment for 46-50 percent TDF utilization are consistent with the TDF Addendum EIR. Upon approval of the health risk assessment, TDF usage limitation shall be the maximum percentage in the range of TDF used for the most current and approved health risk assessment. (Rule 419, CEQA and CH&SC 41700)

## Emission Unit 042 Permit Conditions

- hh. If results from TDF source testing shows a cancer impact of greater than one in one million or a net increase of 0.2 for the total hazard index for any off-site receptor, then National Cement will be allowed to retest if necessary according to protocol approved by the APCO. The baseline value used to determine the net increase of the total hazard index shall be determined, agreed upon and documented in the protocol at least 30 days prior to the source test. If subsequent TDF testing produces unacceptable cancer or total hazard index values then National Cement shall submit an application for ATC modification proposing reduction of TDF utilization to a level providing acceptable health risk assessment values. Application shall be submitted within 180 days of the latest TDF source test producing the unacceptable health impact value. (Rule 419, CEQA and CH&SC 41700)

DRAFT

## Appendix A

This source is subject to the requirements of 40 CFR Part 63, Subpart LLL - National Emission Standards for Hazardous Air Pollutants from the Portland Cement Manufacturing Industry, as follows:

**63.9 Initial notification.**

**63.1356 Compliance date.**

**63.4 Circumvention.**

**63.6 Operation and maintenance requirements.**

**63.1350**

**63.6 Startup, shutdown, and malfunction plan.**

**63.8 General monitoring requirements.**

**63.1355 Record keeping requirements.**

**63.10 Reporting requirements.**

**63.1354**

### **Emissions standards and operating limits**

**63.1343 Standards for kilns and in-line kiln/raw mills (Kiln/Calciner).**

**63.1345 Standards for clinker coolers (Clinker Cooler).**

**63.6 Compliance with nonopacity emission standards.**

**63.1349 Performance testing requirements.**

**Monitoring requirements**

**63.1350 Kiln and in-line kiln/raw mill - D/F emission limit (Kiln/Calciner).**

**Opacity standards**

**63.1343 Standards for kilns and in-line kiln/raw mills (Kiln/Calciner).**

**63.1345 Standards for clinker coolers (Clinker Cooler).**

**63.1437 Standards for raw and finish mills (Raw Mill Grinding, Finish Mill, Separator).**

**63.1348 Standards for affected sources other than kilns, in-line kiln/raw mills, clinker coolers, and raw and finish mills (Raw Materials Drying, Raw Materials Storage, Clinker/Gypsum Silos, Clinker Storage, Clinker Storage, Cement Silos/Packhouse/Loadout).**

**Monitoring requirements**

**63.1350 Kiln and in-line kiln/raw mill (Kiln/Calciner).**

**63.1350 Clinker cooler (Clinker Cooler).**

**63.1357 Temporary, conditioned exemption from opacity standards (Kiln/Calciner).**

## **Appendix B**

### **PSD Permit Conditions (NSR 4-4-11, SJ 95-01)**

#### **I. Permit Expiration**

This approval to Construct/Modify shall become invalid (1) if construction is not commenced (as defined in 40 CFR 52.21 ((b)(8)) within 18 months after the approval takes effect, (2) if construction is discontinued for a period of 18 months or more, or (3) if construction is not completed within a reasonable time.

#### **II. Notification of Commencement of Construction and Startup**

The Regional Administrator shall be notified in writing of the anticipated date of initial startup (as defined in 40 CFR 60.2(o)) of each facility of the source not more than sixty (60) days nor less than thirty (30) days prior to such date and shall be notified in writing of the actual date of commencement of construction and startup within fifteen (15) days after such date.

#### **III. Facility Operation**

All equipment, facilities, and systems installed or used to achieve compliance with terms and conditions of this Approval to Construct/Modify shall at all times be maintained in good/working order and be operated as efficiently as possible so as to minimize air pollutant emissions.

#### **IV. Malfunction**

The Regional Administrator shall be notified by telephone within 48 hours following any failure of air pollution equipment, process equipment, or of a process to operate in a normal manner, which results in an increase in emissions above any allowable emission limit stated in Section IX of these conditions. In addition, the Regional Administrator shall be notified in writing within fifteen (15) days of such failure. This notification shall include a description of the malfunctioning equipment or abnormal operation, the date of the initial failure, the estimated resultant emissions in excess of those allowed under Section X of these conditions, and the methods utilized to restore normal operations. Compliance with this malfunction notification provisions shall not excuse or otherwise constitute a defense to any violations of this permit or of any law or regulations, which such malfunction may cause.

#### **V. Right to Entry**

The Regional Administrator, the head of the State Air Pollution Control Agency, the head of the responsible local Air Pollution Control Agency, and/or their authorized representative, upon the presentation of credentials, shall be permitted:

- A. To enter upon the premises where the source is located or in which any records are required to be kept under the terms and conditions of this Approval to Construct/Modify; and

- B. At reasonable time to have access to an copy any records required to be kept under the terms and conditions of the Approval to Construct/Modify; and
- C. To inspect any equipment, operation, or method required in this Approval to Construct/Modify
- D. To sample emissions from the source.

## **VI Transfer of Ownership**

In the event of any changes in control or ownership of facilities to be constructed or modified, this Approval to Construct/Modify shall be binding on all subsequent owners and operators. This applicant shall notify the succeeding owner and operator of the existence of this Approval to Construct/Modify and its conditions by letter, a copy of which shall be forwarded to the Regional Administrator and the State and local Air Pollution Control Agency.

## **VII. Severability**

The provisions of this Approval to Construct/Modify are able, and, if any provision of this Approval to Construct/Modify is held invalid, the remainder of this Approval to Construct/Modify shall not be affected thereby.

## **VIII Other Applicable Regulations**

The owner and operator of the proposed project shall construct and operate the proposed stationary source in compliance with all other applicable provisions of 40 CFR Part 52, 60 and 61 and all other applicable federal, state and local air quality regulations.

## **IX. Paperwork Reduction Act**

Any requirements established by this permit for the gathering and reporting if information are not subject to review by the Office of Management and Budget (“OMB”) under the Paperwork Reduction Act because this permit is not an “information collection request” within the meaning of 44 U.S.C.350(4)&(11), 3507, 3512 and 32518.

Futhermore, this permit and any information gathering and reporting requirements established by this permit are exempt from OMB review under the Paperwork Reduction Act because it is directed to fewer than ten persons. 44 U.S.C. 3502(4), (11), 5 C.F.R. 1320.5(a).

## **X. Special Conditions**

### **A. Certification**

NCCC shall notify the EPA in writing of compliance with Special Condition X.B and X.H and shall make such notification within fifteen (15) days of such compliance. This letter must be signed by the responsible representative of NCCC.

## **B. Air Pollution Control Equipment**

NCCC shall install, continuously operate and maintain the following air pollution controls to minimize emissions. Controls listed shall be fully operational upon startup of the proposed equipment.

1. All point source emissions shall be controlled by baghouse type controls.
2. All raw materials transfer and crushing points upstream of kiln with potential to emit dust shall be provided with water sprays with sufficient water volume to eliminate visible emissions.
3. Particulate control of haul roads shall be no less than 79.6% and shall be achieved by application of water or EKAPCD-approved dust palliative(s). Visible fugitive dust emissions from all haul roads shall not exceed 10% opacity.

## **C. Performance Tests**

1. Within 60 days of achieving the maximum production rate of the proposed equipment but not later than 180 days after initial startup of the equipment as defined in 40CFR 60.2(o), and at such other times as specified by the EPA, NCCC shall conduct performance tests for NO<sub>x</sub>, NO<sub>2</sub>, CO and SO<sub>2</sub> shall be conducted and the results reported in accordance with the test methods set forth in 40 CFR 60, Part 60.8 and Appendix A. The following test methods shall be used:
  - a. Performance tests for the emissions of NO<sub>x</sub> and NO<sub>2</sub> shall be conducted using EPA Methods 1-4 and 7E.
  - b. Performance tests for the emissions of SO<sub>2</sub> shall be conducted using EPA Methods 1-4 and 8.
  - c. Performance test for the emissions of CO shall be conducted using EPA Methods 1-4 and 10

The EPA shall be notified in writing a least thirty (3) days prior to such test to allow time for the development of an approvable performance test plan and to arrange for an observer to be present at the test.

Such prior approval shall minimize the possibility of EPA rejection of test results for procedural deficiencies. In lieu of the above-mentioned test methods, equivalent methods may be used with prior written approval from the EPA.

2. For performance test purposes, sampling ports, platforms and access shall be provided by NCCC on the kiln exhaust stack in accordance with 40 CFR 60.8(e).

## **D. Emission Limits for Nitrogen Dioxide**

On and after the date of this permit (Original: of startup), NCCC shall not discharge or cause the discharge into the atmosphere NO<sub>2</sub> in excess of 3.4 lbs/ton of clinker (30-day average) and 361.25 lb/hr (24-hour average) from the kiln stack (assumes 75% NO<sub>2</sub> to NO<sub>x</sub> ratio).

Enforcement of this condition shall be based on NO<sub>x</sub>, CEM and NO<sub>2</sub> to NO<sub>x</sub> ratio from most recent performance test.

EPA may set a new lower allowable emission rate for the above emission limits after reviewing the performance test results or the initial NO<sub>2</sub> monitoring data required under the Special Conditions C and H.

If the NO<sub>2</sub> emission limit is revised, the difference between the NO<sub>2</sub> emission limit set forth above and a revised lower NO<sub>2</sub> emission limit shall be allowed as an emission offset for future construction or modification.

#### **E. Emission Limits for CO**

On and after the date of startup, NCCC shall not discharge or cause to discharge into the atmosphere CO in excess of the following amounts from kiln stack:

1. 3,000 lbs/hr (3-hour rolling average)
2. 2,000 lbs/hr (8-hour rolling average)
3. 1,200 lbs/hr (24-hour average)

EPA may set a new lower allowable emission rate for the above emission limits after reviewing the performance test results or the initial CO monitoring data required under Special Conditions C and H.

If the SO<sub>2</sub> emission limit is revised the difference between the SO<sub>2</sub> emission limit set forth above and a revised lower SO<sub>2</sub> emission limit shall not be allowed as an emission offset for future construction or modification.

#### **F. Emission Limits for Sulfur Dioxide**

On or after the date of startup, NCCC shall not discharge or cause to discharge into the atmosphere SO<sub>2</sub> in exceeds of 53.83 lbs/hr (3-hour average) from the kiln stack.

EPA may set a new lower allowable emission rate for the above emission limits after reviewing the performance test results or the initial SO<sub>2</sub> monitoring data required under Special Conditions C and H.

If the SO<sub>2</sub> emission limit is revised, the difference between the SO<sub>2</sub> emission limit set forth above and a revised lower SO<sub>2</sub> emission limit shall not be allowed as an emission offset for future construction or modification.

#### **G. Fuel Use and Operating Limits**

1. NCCC shall only burn coal, petroleum coke, tire derived fuel (TDF), natural gas and/or fuel oil in the kiln/preheater system. The maximum allowed TDF weight % is 50% of entire fuel mix, quarterly basis.
2. NCCC shall record and maintain records of the amounts of clinker produced, the plant hours of operation, the amounts and type of fuel combusted, and TDF weight % each calendar quarter. All information shall be recorded in a permanent form suitable for

inspection. The file shall be retained for at least two years following the date of such measurements, calculation and record.

## **H. Continuous Emission Monitoring**

1. Prior to the date of startup and thereafter, NCCC shall install, maintain and operate the following continuous emission monitoring systems in the main kiln stack:
  - a. Continuous monitoring systems to measure stack gas NO<sub>x</sub>, CO and SO<sub>2</sub> concentrations. The systems shall meet EPA monitoring performance specification (40 CFR 60.13 and 40 CFR 60, Appendix B, Performance Specification 2,3, and 4).
  - b. A continuous monitoring system to measure stack gas volumetric flow rates. The system shall meet EPA performance specification (40 CFR Part 52, Appendix E)
2. NCCC shall maintain a file of all measurements, including continuous monitoring systems evaluations; all continuous monitoring systems or monitoring device calibration checks; adjustments and maintenance performed on these systems or devices; performance and all other information required by 40 CFR 60 recorded in a permanent form suitable for inspection. The file shall be retained for at least two years following the date of such measurements, maintenance, reports and records.
3. NCCC shall notify EPA (Attention AIR-3) of the date on which the demonstration for the continuous monitoring system performance commences (40 CFR 60.13(c)). This date shall be within sixty (60) days of achieving maximum production rate of the proposed equipment but no later than 180 days after effective date of this permit (Original: initial startup of the equipment as defined in 40 CFR 60.2(o))
4. NCCC shall submit a written report of all excess emissions to EPA (Attention: AIR-3) for every calendar quarter. The report shall include the following:
  - a. The magnitude of the excess emissions computed in accordance with 40 CFR 60.13(h), any conversion factors used, and the date and time of commencement and compilation of each time period of excess emissions.
  - b. Specific identification of each period of excess emissions that occurs during startups, shutdowns, and malfunctions of the kiln exhaust system. The nature and cause of malfunction (if known) and the corrective action taken or preventative measures adopted shall also be reported.
  - c. The date and time identifying each period during which the continuous monitoring system was inoperative except for zero and span checks, and the nature of the system repairs and adjustments.
  - d. When no excess emissions have occurred or the continuous monitoring system has not been inoperative, repaired, or adjusted, such information shall be stated in the report.

- e. Excess emissions of NO<sub>2</sub> shall be defined as any 24-hour or 30-day period during which average NO<sub>2</sub> emissions, as measured by CEM, and using most recent measurement of NO<sub>2</sub> to NO<sub>x</sub> ratio, exceeds maximum emission limits set forth in Condition X.D. Excess emission of CO and SO<sub>2</sub>, as measured by CEM, exceeds maximum emission limits set forth in Conditions X.E. and X.F.
5. Excess emission indicated by the CEM system shall be considered violations of the applicable emission limit for the purpose of this permit.
6. Prior to date of startup of the facility, NCCC shall prepare a quality assurance project plan for the certification and operation of the continuous emission monitors. Such a plan shall conform to the EPA quality assurance requirements of 40 CFR 60, Appendix F.

#### **I. New Source Performance Standards**

The proposed cement manufacturing facility is subject to the Standards of Performance for New Stationary Sources (NSPS) 40 CFR 60, Subpart F, including all emissions limits and notifications, testing, monitoring, and reporting requirements.

#### **XI. Agency Notification**

All correspondence as required by this Approval to Construct/Modify shall be forwarded to:

- A. Director, Air Division (Attn: AIR-3)  
U.S. Environmental Protection Agency  
75 Hawthorne Street  
San Francisco, CA 94105
- B. Chief, Stationary Source Division  
California Air Resources Board  
P.O. Box 2815  
Sacramento, CA 95812
- C. Air Pollution Control Officer  
Eastern Kern Air Pollution Control District  
2700 M Street, Suite 302  
Bakersfield, CA 93301

**Appendix C**

**11-8-99 PSD Application**

DRAFT

## Appendix D

### Greenhouse Gas Facility Wide Reporting

#### **Greenhouse Gases:**

Carbon dioxide (CO<sub>2</sub>),

Nitrous oxide (N<sub>2</sub>O),

Methane (CH<sub>4</sub>),

Hydrofluorocarbons (HFCs),

Perfluorocarbons (PFCs), and

Sulfur Hexafluoride (SF<sub>6</sub>).

Reported for the year 2009

<b>GHG EMISSIONS (short tons per year)</b>							
Pollutants:	CO <sub>2</sub>	CH <sub>4</sub>	N <sub>2</sub> O	HFCs	PFCs	SF <sub>6</sub>	Total
Emissions (tpy):	417,936	4.3	0.8	NA	NA	NA	
*GWP:	1	21	310	**	**	23,900	
CO <sub>2</sub> e (tpy):	417,936	90.3	248	NA	NA	NA	418,274.3

\*Global Warming Potential (GWP): The capacity to heat the atmosphere, calculated as the ratio of the time-integrated radiative forcing from the instantaneous release of 1 kilogram (kg) of a substance relative to that of 1 kg of CO<sub>2</sub>. GWP shall be calculated according to the factors for a 100-year time horizon, as stated in 40 CFR Part 98 Subpart A Table A-1 (Global Warming Potentials).

\*\* GWP varies based on each pollutant.